

千葉大学

2024-2025

CHIBA UNIVERSITY



CHIBA UNIVERSITY

A Message from the President



In the face of declining birth rates and a shrinking population, Japanese society is seeking ways to continue its development. If we turn our eyes abroad, many social issues need to be resolved on a global scale, such as ongoing conflicts between nations and ethnic groups, environmental degradation, global warming, and the frequency and variety of disasters. At the same time, new technologies and scientific advances, such as AI, are a source of hope for humanity and are expected to contribute to a sustainable society.

Under the university philosophy “Always aim higher,” we are focusing on developing individuals who can contribute to solving problems in response to changing times and environments. Our goal is to showcase our influence within the local community and on the global stage as a world-preeminent academic institution in education and research, paving the way for a promising future and becoming the preferred university of choice. As of April 2024, we have 11 faculties and 9 graduate schools, providing an excellent academic environment where students can acquire fundamental knowledge across many different subject areas as well as advanced expertise.

In the realm of education, we cultivate knowledgeable and versatile individuals capable of assuming leadership roles in a global society through the provision of high-quality education. We also made study abroad compulsory univer-

sity-wide, giving students chances to perceive Japan from a global perspective with various overseas programs.

About research, we established the Institute for Advanced Academic Research (IAAR) in 2022. It aims to promote pioneering academic research that initiates new exploration and fosters cutting-edge innovations that bring social reform while respecting the diversity within academia. IAAR’s focus also includes supporting and cultivating talented young and mid-career researchers. In addition, our Academic Research & Innovation Management Organization (IMO) functions as a hub for promoting academia-industry collaboration for social implementation.

In 2024, Chiba University marks its 75th anniversary. At this milestone, we reaffirm the importance of continuing close collaboration with educational, industrial, medical, and other sectors and governmental and local communities to become a trusted, admired, and proud contributor to society.

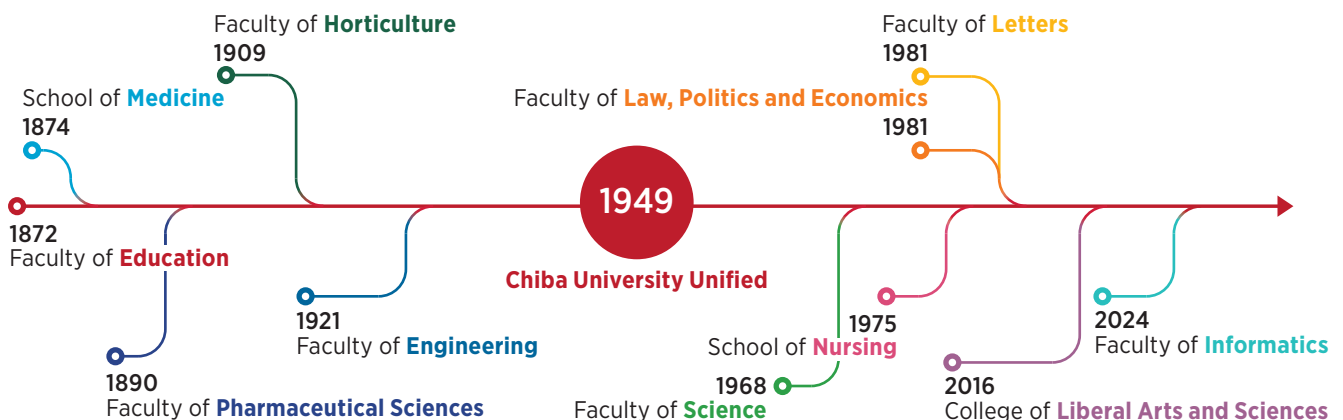
The cornerstone of our efforts is “each individual.” Chiba University continues to be an institute where each student, faculty, and staff member can be true to their values and work together to create a compelling and engaging university that enriches the lives of every individual.

YOKOTE Koutaro
President of Chiba University

History

The history of Chiba University began with the founding of the Chiba Normal School and the Chiba Public Hospital around 150 years ago. In 1949, Chiba University was re-established and unified with five faculties. Today, Chiba University has developed with 11 undergraduate schools and 9 graduate schools.

Its fundamental mission since then has been, as encapsulated by the inscription on the University Bell, AD ALTIOLA SEMPER (always aim higher), to equip students with the ability to make mature and informed judgments while nurturing and guiding their creativity.



Chiba University Charter



“Always Aim Higher”

This charter is guided by the university motto
“Always Aim Higher.”

Chiba University undertakes teaching and research to maintain, disseminate and advance knowledge. In its teaching, Chiba University seeks to meet the interests of students, the needs of the community, and to foster generally the exploration and discovery of ideas and knowledge.

Based on the principle, the university community shall firmly maintain the spirit of freedom and independence. We actively seek ways of organizing and managing ourselves that best support our teaching and research. We are open and alert to new opportunities, including collaboration and cooperation with other institutions, to further the role we play. We participate actively in our local community and play our part as critic and conscience of society and will further the cause for peace and harmonious coexistence with nature.



1 Ensure that students are supported in their studies, in a manner which maximizes their opportunity to reach their potential, through the provision of appropriate services and support mechanisms, including student mental and physical health, and welfare.

2 Provide an academically rigorous education that meets global standards to ensure that our qualifications, our staff, and our students continue to receive recognition from comparable institutions nationally and globally.

3 Ensure that the University is an active and respected member of the global academic community, that opportunities for overseas students to study and to undertake research are increased, and that our students are exposed to the benefits of a global perspective in their studies and lives.

4 Maintain and develop research and creative activities of global standing regarding both quality and productivity by promoting selected areas in which excellence can be achieved while also protecting the rights and obligations of all academic staff to undertake research. Within this environment, the university will be flexibly managed to resonate with and adapt to the changing times.

Towards a world preeminent academic institution

World Leading Research

A Hub of Global Brain Circulation

–Generate and expand world leading research–

- Appreciate academic diversity to encourage creative research
- Promote world-class academic research to pioneer new interdisciplinary research fields
- Accelerate innovative research to create new academic value
- Establish a research-faculty organization, “International Strategic Research Institute”

Global Education

Nurture Global Talent

–Learn from the world, devote to the world–

- Let the world be our campus –Provide an educational environment in which to learn cutting-edge technologies and knowledge–
- Be a leader within global society –Cultivate leadership qualities and challenging attitude–
- Develop advanced expertise –Foster comprehensive knowledge and profound intelligence–
- Build the highest level of advanced education –Strengthen the International Strategic Research Institute–

Holistic Governance

Strategic and Holistic University Management

–Strengthen operation foundations–

- Implement digital transformation –Govern the strategic university management
- Inspire employees to give their best performance –Enhance the competitiveness of the University in a collaborative system
- Create a fulfilling and rewarding academic environment –Build the workplace where all can gain enrichment in everyday work
- Formulate elaborate and systematic PR strategies –Utilize social resources effectively–

Social Engagement

Chiba University’s commitment to society

- Contribute to sustainable development of society by producing high quality research and cultivating specialized talents
- Engage the community as a base for intelligence and human resources
- Strengthen the Industry-Academia-Government relationships towards innovation
- Establish the Chiba University brand as a world-leading university

Chiba University

Facts at a Glance

More Information:
-Data Summary



11 Undergraduate Schools

9 Graduate Schools

Total
13,788 Students 

10,408 (Undergraduate Degree) **2,074** (Master's Degree) **1,180** (Doctoral Degree) **126** (Professional Degree)

Total
3,615 Staff (2024) 

1,664 Staff
1,951 Staff
● Male ● Female

10 Executive Directors
(● 8 Male ● 2 Female)

1,294 Academic Staff
(● 974 Male ● 320 Female)

2,311 Technical/Administrative Staff
(● 682 Male ● 1,629 Female)

5 Campuses

Nishi-Chiba Campus / Inohana Campus / Matsudo Campus / Kashiwanoha Campus / Sumida Satellite Campus

25 Centers for Education and Research

850 Beds in University Hospital

20,713 New Inpatients (2023)

About
1.3 Million Books

University Library / Academic Link Center

515 Agreements with Partner Universities and Institutions 

(As of May 1, 2024)

287 University Level Exchange Agreements

228 Faculty Level Exchange Agreements

Campus

More Information:
- Campus Map



Chiba University has four campuses in Chiba Prefecture and one in metropolitan Tokyo. Our main campus, Nishi-Chiba campus is located at 50 minutes by train from Narita International Airport and Tokyo Station.



■ Nishi-Chiba Campus



This campus is home to the following fields:

- Liberal Arts and Sciences**
- Letters**
- Law, Politics and Economics**
- Education**
- Science**
- Engineering**
- Informatics**

■ Inohana Campus



This campus is home to the following fields:

- Medicine**
- Pharmaceutical Sciences**
- Nursing**

■ Matsudo Campus



This campus is home to the following fields:
Horticulture

■ Kashiwanoha Campus



This campus is home to the following center:
Center for Environment, Health and Field Sciences

■ Sumida Satellite Campus



This campus is home to the following center:
Design Research Institute

Undergraduate Schools

More Information:
- Undergraduate Schools
- Graduate Schools



■ College of Liberal Arts and Sciences

- Global Studies
- Contemporary Japanese Studies
- Integrated Science

■ Faculty of Letters

- Behavioral Sciences
- Historical Studies
- Japanese and Eurasian Cultures Studies
- International Languages and Cultures

■ Faculty of Law, Politics and Economics

- Law
- Economics
- Management and Accounting
- Politics and Policy Sciences

■ Faculty of Education

- Elementary Teaching
- Elementary and Junior High School Education
- Junior High School Teaching
- English Education
- Special Needs Child Education
- Infant and Kindergarten Education
- School Nursing (Yogo)

■ Faculty of Science

- Mathematics and Informatics
- Physics
- Chemistry
- Biology
- Earth Sciences



■ Faculty of Engineering

- Architecture
- Urban Engineering
- Design
- Mechanical Engineering
- Medical Engineering
- Electrical and Electronic Engineering
- Materials Science
- Applied Chemistry and Biotechnology

■ Faculty of Informatics

- Data Science
- Information Engineering

■ Faculty of Horticulture

- Horticulture
- Applied Biological Chemistry
- Environmental Science and Landscape Architecture
- Food and Resource Economics

■ School of Medicine

- Medicine

■ Faculty of Pharmaceutical Sciences

- Pharmacy
- Pharmaceutical Sciences

■ School of Nursing

- Nursing



Graduate Schools

More Information:
- Undergraduate Schools
- Graduate Schools



■ Graduate School of Humanities and Studies on Public Affairs

Master's Programs

- Humanities
- Studies on Public Affairs and Social Sciences

Doctoral Program

- Humanities and Studies on Public Affairs

■ Law School

Professional Degree Course

- Law

■ Graduate School of Education

Master's Programs

- Education and Human Development
- Interdisciplinary Curriculum Development
- Language, Human and Social Science Education
- Mathematics, Science and Technology Education
- Fine Arts, Music, Health and Physical Education

Professional Degree Course

- Advanced Professional Development in Education

■ Graduate School of Science and Engineering

Master's and Doctoral Programs

- Mathematics and Informatics
- Earth and Environmental Sciences
- Advanced Science and Engineering
- Creative Engineering
- Fundamental Engineering

■ Graduate School of Informatics

Doctoral Program

- Informatics

■ Graduate School of Horticulture

Master's and Doctoral Programs

- Horticultural Science
- Landscape
- International Course of Environmental Horticulture

■ Graduate School of Medical and Pharmaceutical Sciences

Master's Programs

- Medical Sciences
- General Pharmaceutical Sciences

Four-year Doctoral Programs

- Frontier Medicine and Pharmacy
- Advanced Preventive Medical Sciences

Three-year Doctoral Program

- Frontier Pharmaceutical Sciences

■ Graduate School of Nursing

Master's Programs

- Nursing
- Nursing Practice

Doctoral Program

- Nursing

■ Graduate Degree Program of Global and Transdisciplinary Studies

Master's Programs

- Migration and Refugee Studies
- STS (Science, Technology, and Society) Studies
- Environmental Studies



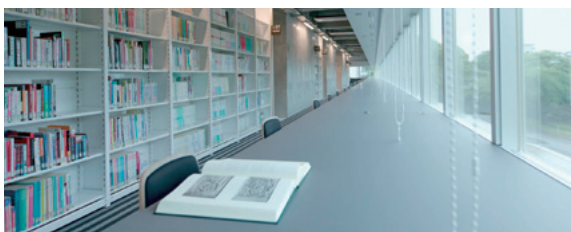
Centers

More Information:
- Centers



■ University Library

- Main Library
- Library of Health Sciences
- Library of Horticultural Sciences



■ University Hospital

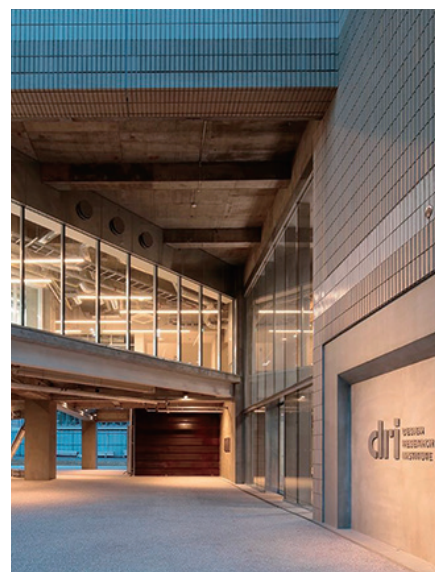
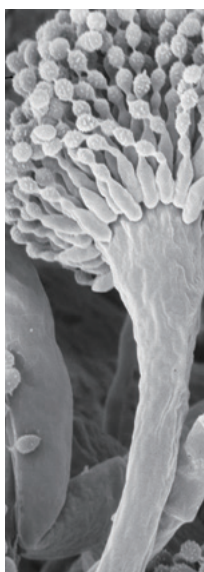


■ Affiliated Schools

- Kindergarten
- Elementary School
- Junior High School
- School for Children with Special Needs

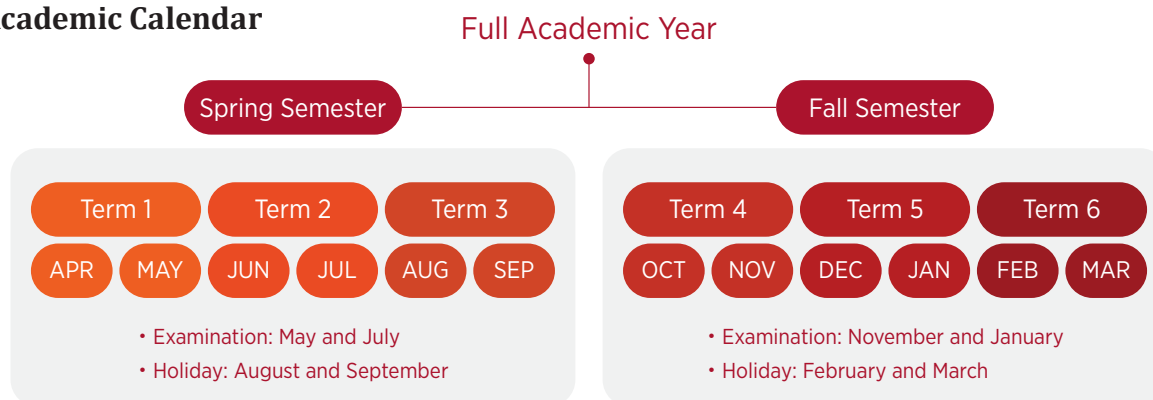
■ Center for Research and Education

- Center for Environmental Remote Sensing
- Medical Mycology Research Center
- Academic Link Center
- Center for Analytical Instrumentation
- Center for Frontier Science
- Social Design Institute
- Center for Relational Studies on Global Crises
- Marine Biosystems Research Center
- Soft Molecular Activation Research Center
- International Center for Hadron Astrophysics
- Molecular Chirality Research Center
- Design Research Institute (dri)
- Center for Frontier Medical Engineering
- Center for Environment, Health and Field Sciences
- Biomedical Research Center
- Center for Forensic Mental Health
- Center for Preventive Medical Sciences
- Future Medicine Research Center
- Research Center for Regenerative Therapeutics
- Research Center for Child Mental Development
- Research Institute of Disaster Medicine
- Health and Disease Omics Center
- Plant Molecular Science Center
- Data Science Core Center
- Radioisotope Research Center



Study at Chiba University

■ Academic Calendar



■ Student Exchange Program

We offer two types of Student Exchange Programs for students from partner universities with student exchange agreements with Chiba University.

J-PAC (Japan Program at Chiba)

J-PAC is a program for undergraduate students whose academic interests are in the area of Japanese language and culture.



Exchange Program at departments

Graduate students or undergraduate students who wish to deepen their majors may be allowed to enroll in one of our faculties or graduate schools as exchange students.



Deadline

Full year* or Fall Semester: March

Spring Semester: September

*Full year---Fall Semester to Spring Semester

Details

More detailed information is available at <https://cie.chiba-u.ac.jp/en/programs/> or please contact the section in charge of international exchange at your home university.

Deadline

It varies from faculties and graduate schools. Please contact the desired faculty or graduate school directly.

<https://www.chiba-u.ac.jp/e/education/>

■ Short Program

Chiba University offers unique short programs in various academic fields during the summer/winter break. These programs are designed for partner institutions which wish to send a group of 15-30 students. These programs consist of workshops, presentations and off-campus activities and are conducted by leading researchers and professionals in each field.



Program Schedules / Samples

As of May 1, 2024

Country or Area	Partner University	Period	Duration	Theme
China	※	April – August, October-February	4 months	Design
China	※	July, January	1 week	Horticulture
U.S.	University of Cincinnati	May – June	2 weeks	Japanese Culture
Sweden	Lund University	June – July	2 months	Japanese/ Japanese Culture
Thailand	Mahidol University	July - August	3 weeks	Japanese/ Japanese Culture
Mexico	University of Monterrey	July	4 days	Design / Landscape Architecture
Mexico	Tecnológico de Monterrey	January-February	4 weeks	Design

※ Universities which have a special agreement with Chiba University.

International Support Desk (ISD)

More Information:
- Website of ISD



Functions as primary contact for international students and researchers who seek help in adapting to life in Japan and at Chiba University. ISD provides the latest information and specific advice on:

Immigration formalities

- Visa application/extension
- Changing residential status
- Bringing family members to Japan
- Residence card (Zairyu card)

■ Nishi-Chiba Campus (Main Office)

General Student Service Center 2F
Tel: +81-43-290-2195



ISD at Nishi-Chiba Campus

Resident formalities

- National Health Insurance
- Moving-in/out notification

Campus & daily life

- Opening a bank account
- Finding a clinic
- Nurseries / Schools
- Leisure venues
- Use of a bicycle on campus
- Food/ Restaurants

■ Inohana Campus Branch

Medical and Pharmaceutical Science
Building II 1F / Tel: +81-43-226-2761



ISD at Inohana Campus

ISD also provides information about services handled by the Center for International Education (CIE) and International Student Division. These include:

- Japanese language courses
- Intercultural activities
- Exchanges with local communities
- Counseling for international students
- Language support by Japanese students/tutors
- Housing
- Scholarships

■ Matsudo Campus Branch

F Building 1F
Tel: +81-47-308-8743



ISD at Matsudo Campus

Contact and Links

■ Contact

International Affairs Division
(General Student Service Center,
Nishi-Chiba Campus)
Tel: +81-43-290-2043
E-mail: kokusai@office.chiba-u.jp



■ News & Events

Scan here for information on the latest news and events at Chiba University.



■ Research

Our research initiatives can be found here.

International Student Division
(General Student Service Center,
Nishi-Chiba Campus)
Tel: +81-43-290-2163
E-mail: dge2195@office.chiba-u.jp



INSTITUTE FOR
ADVANCED
ACADEMIC
RESEARCH



INNOVATION
MANAGEMENT
ORGANIZATION



CHIBADAI NEXT



■ Chiba University Official Video

A short video about overview of Chiba University.



AD ALTIORA SEMPER
UNIVERSITAS CHIBA



CHIBA UNIVERSITY
75 year anniversary
1949 - 2024

1-33, Yayoi-cho, Inage-ku, Chiba-shi, Chiba, 263-8522 Japan
www.chiba-u.ac.jp/e

Copyright (C) 2024-2025 Chiba University.
All Rights Reserved.

