

Number of Students / Number of Staff

Number of Students

Undergraduate

Undergraduate School	Regular Students
College of Liberal Arts and Sciences	402
Faculty of Letters	766
Faculty of Law, Politics and Economics	1,572
Faculty of Education	1,620
Faculty of Science	887
Faculty of Engineering	2,693
Faculty of Informatics	103
Faculty of Horticulture	822
School of Medicine	725
Faculty of Pharmaceutical Sciences	482
School of Nursing	336
Total	10,408

Professional Graduate School

Professional Degree Program	Regular Students
Law School	98
Education	28
Total	126

Graduate

Graduate School	Regular Students	
	Master's Program	Doctoral Program
Humanities and Social Sciences	–	3
Humanities and Studies on Public Affairs	95	75
Education	140	–
Engineering	–	3
Advanced Integration Science	–	1
Science and Engineering	1,369	318
Informatics	–	7
Horticulture	241	76
Medical and Pharmaceutical Sciences	155	627
Nursing	68	70
Graduate Degree Program of Global and Transdisciplinary Studies	6	–
Total	2,074	1,180

Number of Staff

(as of May 1, 2024)

	Executive Director	Faculty & Graduate	Center & Others	University Hospital	Library	Administrative Bureau & Area Administration Departments	Internal Audit Office	Total
President	1							1
Executive Vice President	7							7
Auditor	2							2
Sub Total	10							10
Professor		318	57	12				387
Associate Professor		262	61	16				339
Lecturer		67	25	28				120
Assistant Professor		170	61	162				393
Research Associates		3						3
Sub Total		820	204	218				1,242
Research Fellows		13	32	7				52
Attached School Teachers		99						99
Medical Staff		1	4	1,438				1,443
Admin. Staff		23	21	176	23	523	3	769
Sub Total		136	57	1,621	23	523	3	2,363
Total	10	956	261	1,839	23	523	3	3,615

International Student Enrollment

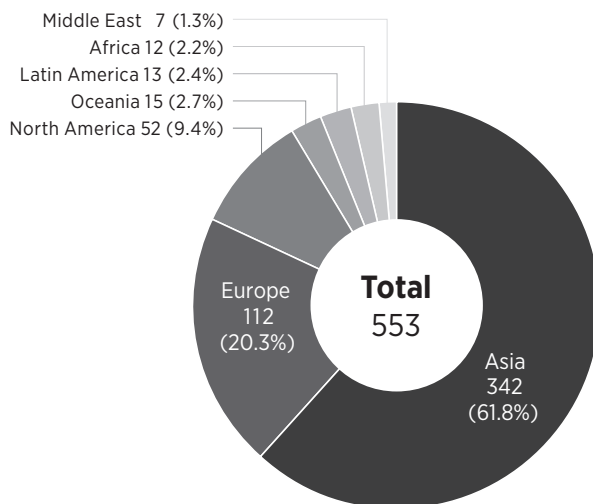
Region	Countries / Area	Undergraduate	Master's Program	Doctoral Program	Others	Total
ASIA	Bangladesh	1		6 (2)		7 (2)
	Brunei				5	5 (0)
	Cambodia		1			1 (0)
	China	71	212	254 (10)	358 (3)	895 (13)
	Hong Kong	2 (2)			4 (1)	6 (3)
	India	1 (1)		5 (3)	36 (2)	42 (6)
	Indonesia	3 (3)	18 (12)	32 (19)	19 (3)	72 (37)
	Korea, Republic of	55 (14)	8 (1)	11	57 (2)	131 (17)
	Malaysia	1	2	2 (1)	4 (1)	9 (2)
	Mongolia	3 (3)	2 (1)	1		6 (4)
	Myanmar			6 (3)	6	12 (3)
	Nepal				3	3 (0)
	North Korea	1				1 (0)
	Pakistan				1	1 (0)
	Philippines	1	1 (1)	4 (3)	1 (1)	7 (5)
	Singapore		1 (1)		2	3 (1)
	Sri Lanka		1 (1)		1 (1)	2 (2)
	Taiwan	3	3	7	129	142 (0)
	Tajikistan				1 (1)	1 (1)
	Thailand		13 (11)	13 (5)	101 (1)	127 (17)
Vietnam	1		1 (1)	4	6 (1)	
MIDDLE EAST	Afghanistan		1			1 (0)
	Iran	1 (1)		1		2 (1)
	Iraq				30	30 (0)
	Israel			1		1 (0)
	Turkey		1 (1)	3 (1)	6	10 (2)
AFRICA	Botswana				1 (1)	1 (1)
	Burkina Faso			1		1 (0)
	Congo				1	1 (0)
	Ethiopia			1	1	2 (0)
	Ghana			1 (1)		1 (1)
	Kenya			1	2 (2)	3 (2)
	Nigeria			1	1 (1)	2 (1)
	South Africa			1	1	2 (0)
Zimbabwe				2 (2)	2 (2)	
OCEANIA	Australia				13	13 (0)
NORTH AMERICA	Canada				4	4 (0)
	U.S.A.			1	48	49 (0)
LATIN AMERICA	Argentina			1 (1)		1 (1)
	Brazil	1	1 (1)	2 (1)		4 (2)
	Chile				1	1 (0)
	Costa Rica			1 (1)		1 (1)
	Cuba			1 (1)		1 (1)
	El Salvador			1	1 (1)	2 (1)
	Guatemala		1 (1)		1 (1)	2 (2)
	Mexico		1 (1)	1	10	12 (1)
	Panama		1 (1)	1 (1)		2 (2)
EUROPE	Belgium				2	2 (0)
	Denmark			1		1 (0)
	Finland				14	14 (0)
	France			1	12	13 (0)
	Germany		1	2	34	37 (0)
	Hungary			1	1 (1)	2 (1)
	Italy				12	12 (0)
	Netherlands	1			1	2 (0)
	Poland				1 (1)	1 (1)
	Portugal				2	2 (0)
	Romania	1 (1)				1 (1)
	Russia				6 (1)	6 (1)
	Slovakia				1	1 (0)
	Spain				8	8 (0)
	Sweden				19 (1)	19 (1)
	Switzerland				7	7 (0)
	U.K.				14	14 (0)
Ukraine	1 (1)				1 (1)	
	Total	148 (26)	269 (33)	367 (54)	989 (28)	1,773 (141)

() shows the number of international students funded by Ministry of Education, Culture, Sports, Science and Technology of Japan

International Researcher Exchange

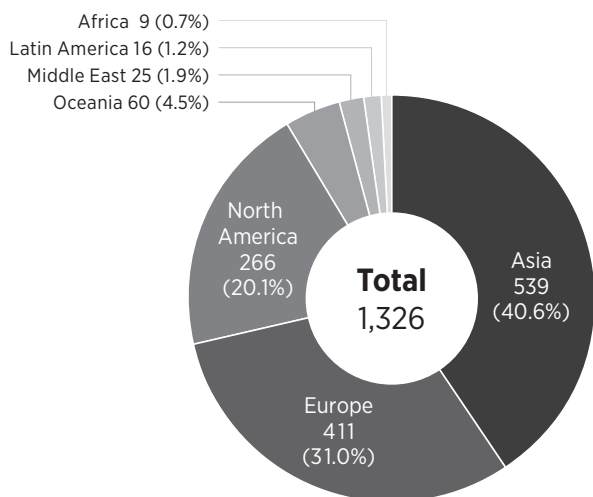
International Researchers at Chiba University

Asia	342
Europe	112
North America	52
Oceania	15
Latin America	13
Africa	12
Middle East	7
Total	553



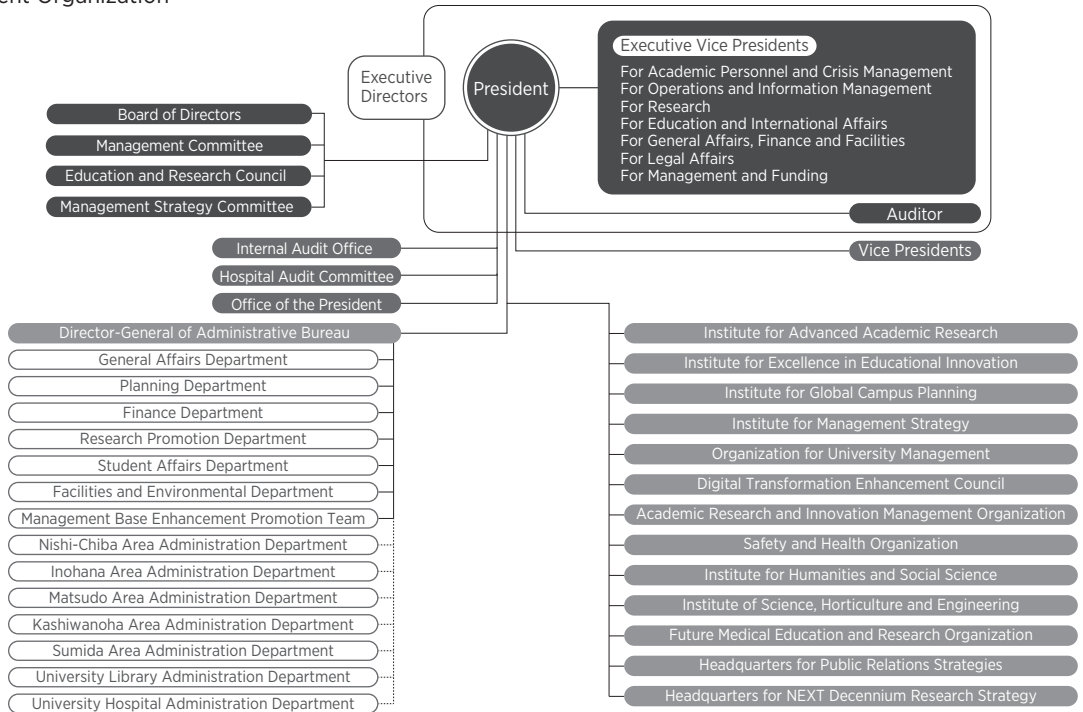
Chiba Univ. Researchers Going Abroad

Asia	539
Europe	411
North America	266
Oceania	60
Middle East	25
Latin America	16
Africa	9
Total	1,326

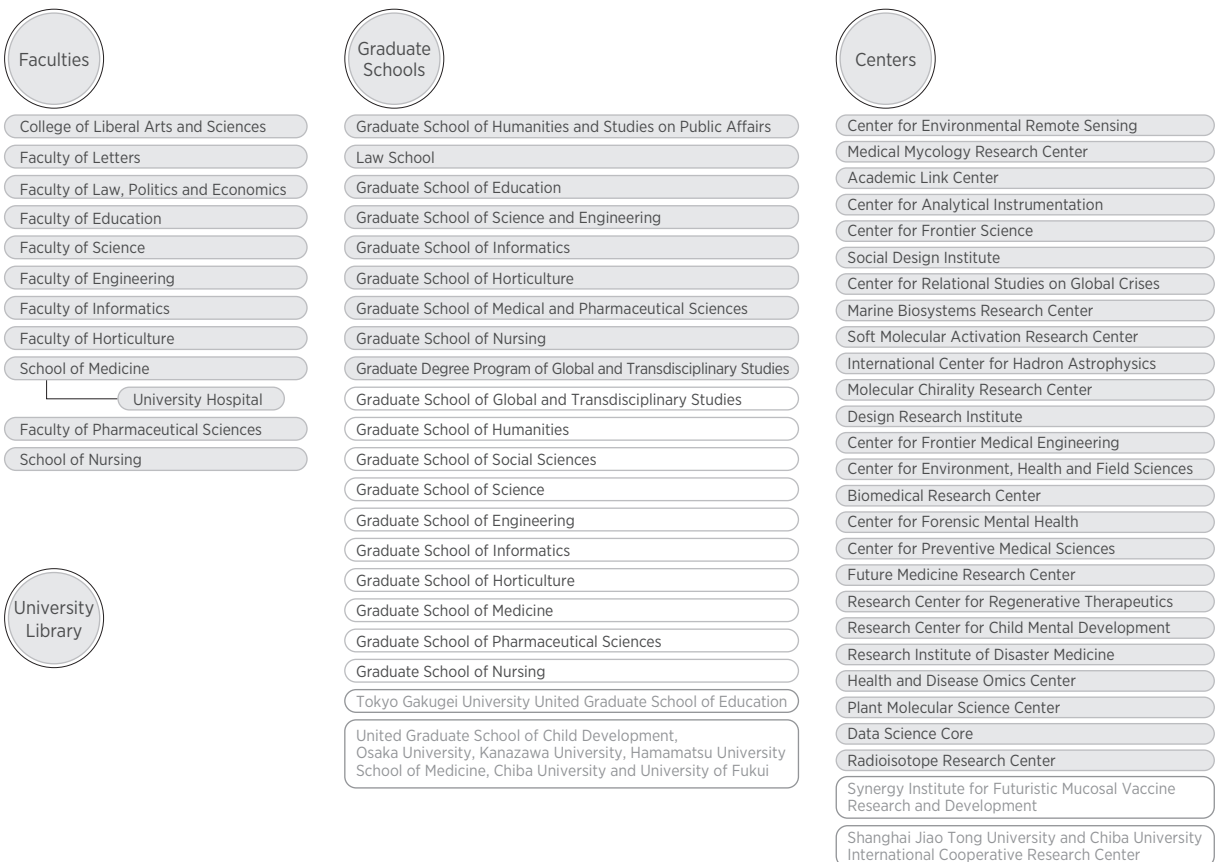


Organization Chart

Management Organization



Education and Research Organization



Administrative Staff

Executive Directors

President	YOKOTE Koutaro
Executive Vice President for Academic Personnel and Crisis Management	NAKAYA Haruaki
Executive Vice President for Operations and Information Management	GOTO Hiroko
Executive Vice President for Research	FUJIE Koichi
Executive Vice President for Education and International Affairs	OZAWA Hiroaki
Executive Vice President for General Affairs, Finance and Facilities / Director-General of Administrative Bureau	MARUYAMA Hiroshi
Executive Vice President for Legal Affairs	HORI Yutaka
Executive Vice President for Management and Funding	IWASAKI Toshihiro
Auditor	SUMIKURA Eiji
Auditor(External)	YAMAMOTO Tomoko

Vice Presidents

for Educational Reform and Support	TAKEUCHI Hiroya
for Admissions	SATO Satoshi
for Research	SAITO Tetsuichiro
for Research and Academic-Industrial Collaboration	MOMOHARA Arata
for Research and Regional Cooperation	HATTORI Katsumi
for Research and Regional Core	NAKAJIMA Hiroshi
for Medium-Term Goals and Plans	MORIBE Kunikazu
for Public Relations, Diversity Promotion and Harassment Prevention and Response	MASAKI Harue
for Affiliated Schools and Teacher Education	SADAHIRO Saiko
for University Hospital	OHTORI Seiji

Deans

College of Liberal Arts and Sciences	WADA Ken
Faculty of Letters	UCHIAYAMA Naoki
Faculty of Law, Politics and Economics	KOBAYASHI Masaya
Faculty of Education / Graduate School of Education	FUJIKAWA Daisuke
Faculty of Science	MATSUURA Akira
Faculty of Engineering	ITO Tomoyoshi
Faculty of Informatics / Graduate School of Informatics	SHIODA Shigeo
Faculty of Horticulture / Graduate School of Horticulture	MOMOHARA Arata
School of Medicine	MIKI Takashi
Faculty of Pharmaceutical Sciences	OGRA Yasumitsu
School of Nursing / Graduate School of Nursing	SUWA Sayuri
Graduate School of Humanities and Studies on Public Affairs	OGIYAMA Masahiro
Law School	KITAMURA Kentetsu
Graduate School of Science and Engineering	SATO Toshinori
Graduate School of Medical and Pharmaceutical Sciences	ITOH Motoyuki

Chair of Graduate Program

Graduate Degree Program of Global and Transdisciplinary Studies	KAMISATO Tatsuhiko
---	--------------------

Directors

University Library / Academic Link Center	TAKEUCHI Hiroya
University Hospital	OHTORI Seiji
Center for Environmental Remote Sensing	HATTORI Katsumi
Medical Mycology Research Center	SASAGAWA Chihiro
Center for Analytical Instrumentation	NISHIDA Atsushi
Center for Frontier Science	KANOHI Hirofumi
Social Design Institute	ISHIDO Hikari
Center for Relational Studies on Global Crises	SAKAI Keiko
Marine Biosystems Research Center	TOGASHI Tatsuya
Soft Molecular Activation Research Center	ARAI Takayoshi
International Center for Hadron Astrophysics	YOSHIDA Shigeru
Molecular Chirality Research Center	OMATSU Takashige
Design Research Institute	UEDA Akira
Center for Frontier Medical Engineering	HANEISHI Hideaki
Center for Environment, Health and Field Sciences	WATANABE Hitoshi
Biomedical Research Center	KOSEKI Haruhiko
Center for Forensic Mental Health	MIKI Takashi
Center for Preventive Medical Sciences	SAKURAI Kenichi
Future Medicine Research Center	HANAOKA Hideaki
Research Center for Regenerative Therapeutics	MOTOHASHI Shinichiro
Research Center for Child Mental Development	SHIMIZU Eiji
Research Institute of Disaster Medicine	TANAKA Tomoaki
Health and Disease Omics Center	KANEDA Atsushi
Plant Molecular Science Center	YAMAZAKI Mami
Data Science Core	NISHIUCHI Hiromu
Radioisotope Research Center	UEHARA Tomoya