

2020
2021

CHIBA UNIVERSITY



CHIBA UNIVERSITY

Contents

01 Introduction

01-1	A Message from the President	3
01-2	Chiba University Charter	4
01-3	Chiba University Vision	6
01-4	Chiba University Facts at a Glance	8
01-5	Organization Chart	10

02 Topic

02-1	Enhanced Network for Global Innovative Education —ENGINE—	12
02-2	Academic Research & Innovation Management Organization (IMO)	14
02-3	WISE Program (Doctoral Program for World-leading Innovative & Smart Education)	15
02-4	Creating Innovation through Collaboration with Companies	16
02-5	Institute for Global Prominent Research	17
02-6	Inter-University Exchange Project	18
02-7	Frontier Science Program Early Enrollment	19
02-8	University Library / Academic Link Center	20
02-9	Honey Bee Project	21
02-10	Inohana Campus High Functionality Initiatives and Inohana IPE	22
02-11	Environmental ISO	23
02-12	Regional Cooperation Efforts by the Office of Community and Innovation (OCI)	24

03 Undergraduate

03-1	College of Liberal Arts and Sciences	26
03-2	Faculty of Letters	27
03-3	Faculty of Law, Politics and Economics	27
03-4	Faculty of Education	27
03-5	Faculty of Science	28
03-6	Faculty of Engineering	28
03-7	Faculty of Horticulture	28
03-8	School of Medicine	29
03-9	Faculty of Pharmaceutical Sciences	29
03-10	School of Nursing	29

04 Graduate

04-1	Graduate School of Humanities and Studies on Public Affairs	31
04-2	Law School	31
04-3	Graduate School of Education	32
04-4	Graduate School of Science and Engineering	32
04-5	Graduate School of Horticulture	32
04-6	Graduate School of Medical and Pharmaceutical Sciences	33
04-7	Graduate School of Nursing	33
04-8	Graduate Degree Program of Global and Transdisciplinary Studies	33

05 Center


05-1	Center for Environmental Remote Sensing (CEReS)	35
05-2	Medical Mycology Research Center (MMRC)	35
05-3	Center for Analytical Instrumentation	35
05-4	Institute of Management and Information Technologies (IMIT)	36
05-5	Center for Frontier Science	36
05-6	Center for Relational Studies on Global Crises	36
05-7	Marine Biosystems Research Center	37
05-8	Soft Molecular Activation Research Center (SMARC)	37
05-9	Molecular Chirality Research Center (MCRC)	37
05-10	Center for Frontier Medical Engineering	38
05-11	Center for Environment, Health and Field Sciences	38
05-12	Biomedical Research Center	38
05-13	Center for Forensic Mental Health	39
05-14	Center for Preventive Medical Sciences	39
05-15	Future Medicine Research Center (FMRC)	39
05-16	Research Center for Regenerative Therapeutics	40
05-17	Research Center for Child Mental Development	40
05-18	Plant Molecular Science Center	40
05-19	Academic Link Center	41
05-20	Venture Business Laboratory	41
05-21	Radioisotope Research Center	41
05-22	University Hospital	42

06 Internationalization

06-1	Partner Universities	44
06-2	Development of Strategic Overseas Centers / International Support Desk (ISD)	46

07 Access

07-1	Nishi-Chiba Campus	48
07-2	Inohana Campus	49
07-3	Matsudo Campus	50
07-4	Kashiwanoha Campus	51
07-5	Transportation Map	52

- 
- 01-1** A Message from the President
01-2 Chiba University Charter
01-3 Chiba University Vision
01-4 Chiba University Facts at a Glance
01-5 Organization Chart

01

Introduction

A Message from the President



In 1949, Chiba University was established as a new national university, bringing under its umbrella the Chiba Normal School and Chiba Medical College, its predecessor institutions with a long history of roughly 150 years. At the time of its founding, Chiba University consisted of five faculties but over the years has continued to develop and grow and today is a comprehensive university boasting 10 undergraduate schools and numerous graduate schools and education and research centers. Since becoming an independent administrative institution in 2004, the university has vigorously promoted organizational reforms and education and research activities that integrate humanities and sciences as well as social contribution activities in accordance with our philosophy and vision. In the area of education, we have established the College of Liberal Arts

and Sciences, and we have established overseas campuses at three partner universities to foster the development of global human resources. As of this academic year, we have also made studying abroad compulsory for all students enrolled in the ENGINE (Enhanced Network for Global Innovative Education) Plan. In addition to these initiatives, to nurture highly specialized human resources, we have developed six-year integrated education programs that link undergraduate and master's programs and we have introduced numerous doctoral courses under the Program for Leading Graduate Schools and Doctoral Program for World-leading Innovative & Smart Education (WISE) with the support of the Ministry of Education, Culture, Sports, Science and Technology. In the area of research, we are supporting creative interdisciplinary research

through the Institute for Global Prominent Research, and innovative frontier research in cooperation with the Artificial Intelligence (AI) Research Center. Furthermore, we have newly established the Innovation Management Organization (IMO) to strengthen our support system for promoting joint research with corporate firms and other organizations. I hope that this booklet both helps you gain an overall picture of Chiba University today and serves as a tremendous resource for our further growth and development.

TOKUHISA Takeshi

President of Chiba University

Chiba University Charter



**CHIBA
UNIVERSITY**

Based on the principle, the university community shall firmly maintain the spirit of freedom and independence. We will actively seek ways of organizing and managing ourselves that best support our teaching and research. We will be open and alert to new opportunities, including collaboration and cooperation with other institutions, to further the role we play. We will participate actively in our local community and play our part as critic and conscience of society and will further the cause for peace and harmonious coexistence with nature.

1 Ensure that students are supported in their studies, in a manner which maximizes their opportunity to reach their potential, through the provision of appropriate services and support mechanisms, including student mental and physical health, and welfare.

2 Provide an academically rigorous education that meets international standards to ensure that our qualifications, our staff, and our students continue to receive recognition from comparable institutions nationally and internationally.

3 Ensure that the University is an active and respected member of the international academic community, that opportunities for overseas students to study and to undertake research are increased, and that our students are exposed to the benefits of an international perspective in their studies and lives.

4 Maintain and develop research and creative activities of international standing regarding both quality and productivity by promoting selected areas in which excellence can be achieved while also protecting the rights and obligations of all academic staff to undertake research. Within this environment, the university will be flexibly managed to resonate with and adapt to the changing times.



“Always Aim Higher”

This charter is guided by the university motto “Always Aim Higher.” Chiba University undertakes teaching and research to maintain, disseminate and advance knowledge. In its teaching Chiba University will seek to meet the interests of students, the needs of the community, and to foster generally the exploration and discovery of ideas and knowledge.



01-3

Chiba University
Vision



2015-2021

A future-oriented comprehensive university

that stands out among others in the world!

Since Chiba University became an independent administrative institution in 2004, we have vigorously promoted enrichment of liberal arts (universal) education and internationalization in our educational activities in the spirit of the university's fundamental principle to "Always aim higher." We have continued our tireless efforts to become a future-oriented comprehensive university that stands out among others in the world through the practice of creative education and research that will lead the world and by strongly promoting basic research and applied research at a world level while respecting diversity in learning.

As the university approaches its third medium-term goal period commencing in 2016, we have formulated a university vision for this period to further our development as a comprehensive university with teaching and research functions of the highest standard. We will do this by accurately identifying various issues humanity faces due to the rapid changes in society in Japan and the world at large, by adequately determining the university's strengths, characteristic features, and potential based on achievement through initiatives to date, and by effectively demonstrating superior research and high-quality teaching capabilities the university possesses in solving various problems.

At Chiba University, our entire univer-

sity staff is united in its commitment to realizing this vision through the provision of strategic support in creative research areas (which will be one of the university's strengths), creation of next-generation innovation, autonomous study as independent individuals, and nurturing the development of next generation human resources who can play key roles in international society.

1 Global: Nurture the development of next-generation human resources who can play an active role in international society.

- Put into practice education at world standards and nurture the development of next-generation human resources through the establishment of the Institute for Excellence in Educational Innovation(IEEI)
- Steadily implement measures to achieve the rebirth of Chiba University as Global Chiba University. (including the Top Global University project, etc.)
- Create research and education centers by establishing international networks.

2 Research: Promote the "Triple Peak Challenge" in research

- Provide strategic support for creative next-generation research through the establishment of the Institute for Global Prominent Research. (IGPR)
- Form a future medical research center for new therapeutics creation through the Inohana Campus High Functionality Initiatives.
- Promote integrated research beyond

the framework of humanities and science.

3 Innovation: Create innovation that will pave the way for the next-generation

- Promote and strengthen cooperative research with industry aimed at creating innovation.
- Nurture the development of human resources who will create innovation and reform organizations.

4 Branding: Enhance Chiba University branding

- Increase international trust through outstanding education and research.
- Promote strategic PR activities.
- Strengthen partnerships with graduates, the corporate world and society.

5 Synergy: Reinforce the cooperative framework of faculty and staff

- Reinforce governance for strategic university management.
- Revitalize education and research activities through the utilization of diverse human resources.
- Improve risk management systems.

Chiba University Facts at a Glance

15 Graduate Schools

- Humanities and Studies on Public Affairs
- Medical and Pharmaceutical Sciences
- Social Sciences
- Law School
- Nursing
- Science
- Education
- Graduate Degree Program of Global and Transdisciplinary Studies
- Engineering
- Science and Engineering
- Global and Transdisciplinary Studies
- Medicine
- Horticulture
- Humanities
- Pharmaceutical Sciences

10 Undergraduate Schools

- Liberal Arts and Sciences
- Engineering
- Letters
- Horticulture
- Law, Politics and Economics
- Medicine
- Education
- Pharmaceutical Sciences
- Science
- Nursing

21 Centers for Education and Research

4 Affiliated Schools

Kindergarten / Elementary School /
Junior High School / School for Children with Special Needs

1.3 Million of Books

University Library / Academic Link Center

850 Beds in University Hospital

20,048 (Number of New Inpatients / 2019)

0.96 Million m² of Campus

Nishi-Chiba Campus / Inohana Campus / Matsudo Campus
Kashiwanoha Campus

891 Billion Yen of Budget

Revenue
Expenditure
(2019)

509 Partner Universities and Institutions

(As of May 1, 2020)
257 (University exchange agreements)
252 (Faculty exchange agreements)



Total
13,832 Number of Students



Total
3,548 Student Enrollment



10,473 (Undergraduate Degree)
2,038 (Master's Degree)
1,222 (Doctoral Degree)
99 (Professional Degree)

2,385 (Undergraduate Degree)
883 (Master's Degree)
241 (Doctoral Degree)
39 (Professional Degree)

Total
3,683 Degrees Awarded
 (2019)



Total
3,402 Number of Staff
 (2020)



1,685 Staffs
1,717 Staffs
 ● Male
 ● Female

9 Executives
1,308 Academic Staff
 (● **1,018** Male ● **290** Female)
2,085 Technical/Administrative Staff
 (● **659** Male ● **1,426** Female)

Total
2,328 International Students
 (2019)



Total
831 Students Going Abroad
 (2019)



Total
691 International Researchers
 (2019)

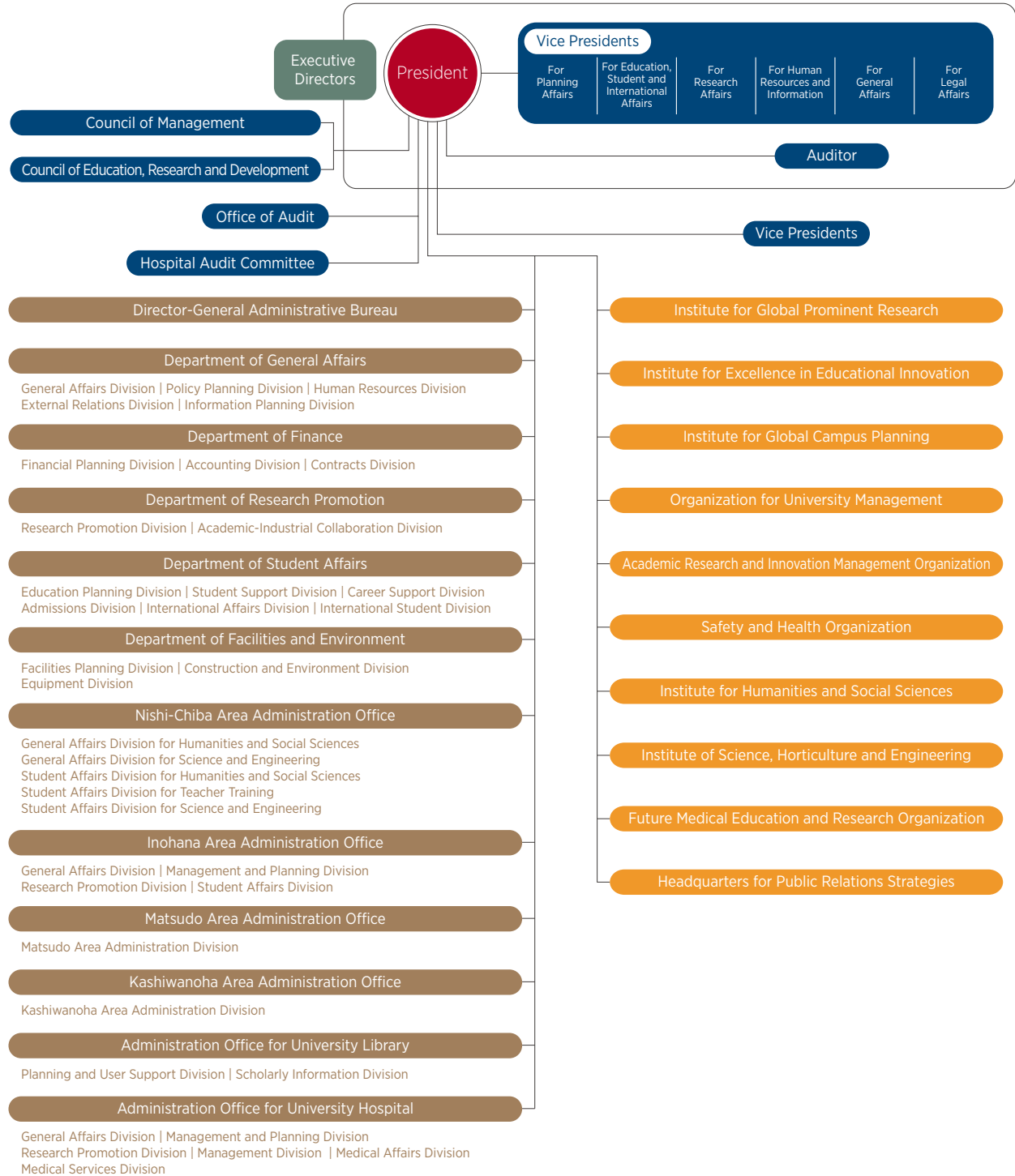


Total
1,631 Staff Going Abroad
 (2019)



Organization Chart

Management Organization



- 02-1** Enhanced Network for Global Innovative Education—ENGINE—
- 02-2** Academic Research & Innovation Management Organization (IMO)
- 02-3** WISE Program (Doctoral Program for World-leading Innovative & Smart Education)
- 02-4** Creating Innovation through Collaboration with Companies
- 02-5** Institute for Global Prominent Research
- 02-6** Inter-University Exchange Project
- 02-7** Frontier Science Program Early Enrollment
- 02-8** University Library / Academic Link Center
- 02-9** Honey Bee Project
- 02-10** Inohana Campus High Functionality Initiatives and Inohana IPE
- 02-11** Environmental ISO
- 02-12** Regional Cooperation Efforts by the Office of Community and Innovation (OCI)



02 Topic

Enhanced Network for Global Innovative Education —ENGINE—

■ Chiba University Global Program “ENGINE”



Chiba University has created the “Chiba University Global Program ENGINE”, which stands for “Enhanced Network for Global INnovative Education”. It is a program designed to further expand and develop Chiba University’s existing global professional education strategy, which is already producing enhanced outcomes for our College of Liberal Arts and Sciences in particular. ENGINE, which has been implemented starting with the 2020 academic year, will equip professionals aiming to achieve flourishing careers on a world stage with the ability to communicate, convey information, and articulate ideas.

■ ENGINE’s initiatives

One ENGINE goal is to strengthen overseas study programs and overseas study support systems, with the aim of getting each and every Chiba University undergraduate and graduate student to undertake a course of overseas study. Other goals are to reorganize our teaching faculty for example by increasing the number of our foreign teaching staff and to put in place a course framework which will allow students to continue to complete their subjects even while studying overseas. To those ends, under ENGINE, we implement the following specific initiatives.

1 Provide a properly resourced environment for our students to study overseas

With the principal goal of instilling our students with an international sensibility, a period of overseas study is made mandatory for our undergraduate and graduate school students alike. We also establish a diverse range of overseas study programs in all our Faculties and departments that fit our students’ overseas study goals and foreign language abilities. As another ENGINE initiative, we are appointing overseas study support staff members who provide support with the running of our study programs.

2 Provide a fully global education

English is the language of communication around the world. Chiba University provides an environment where our students can study English from a multi-

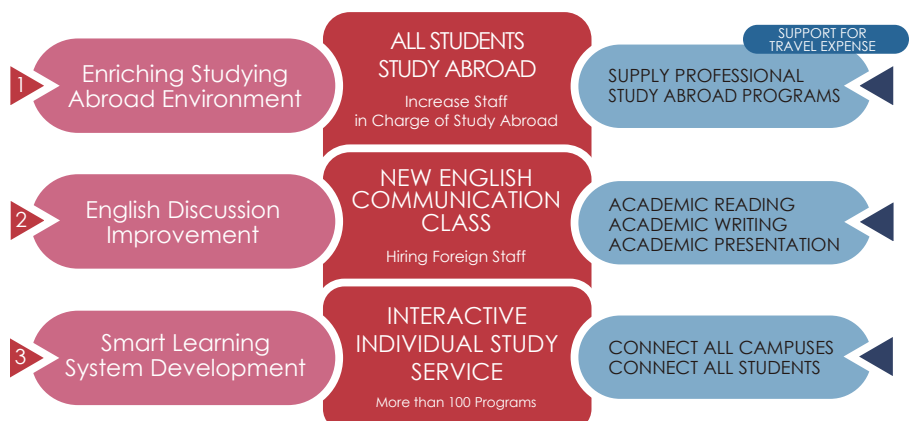
disciplinary perspective.

For English reading and writing capabilities, we hold lectures that aim to help our students write their theses in English. For English listening and speaking capabilities, we are conducting practical-oriented education for communicating in English within the context of international Japanese studies. We also hired additional foreign national lecturers, who provide English-language education in keeping with the particular features of the relevant department where they are assigned.

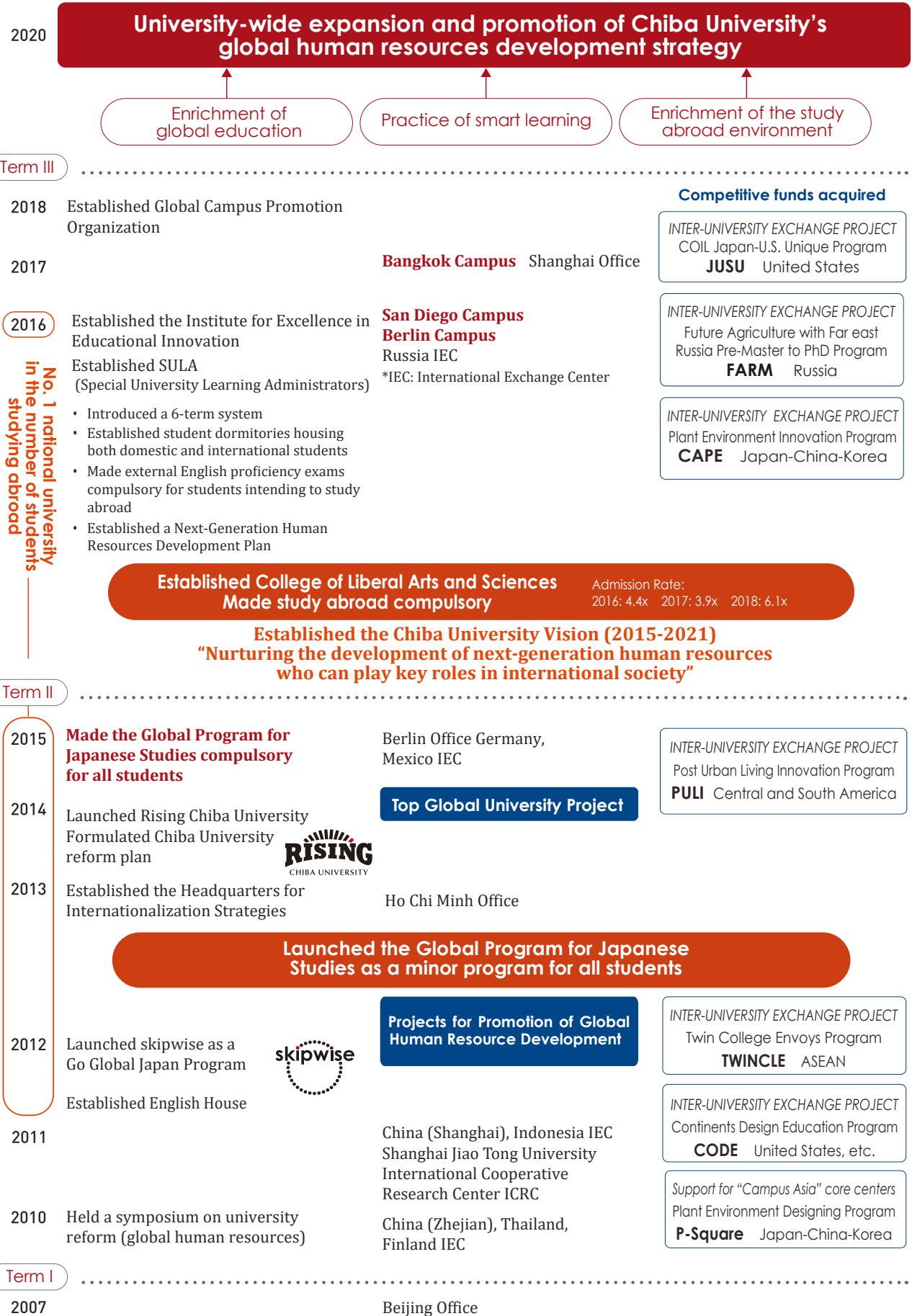
3 Practice-based application of smart learning methods

We put in place an environment where students can undertake study anytime, anywhere through the use of “smart learning”, a system of teaching that employs e-learning.

Chiba University Global Program “ENGINE”



Development of global human resources who will become true leaders in various fields of international society



Academic Research & Innovation Management Organization (IMO)

- Chiba University's new hub for innovation through Industry
-Academia-Government Collaboration



The Academic Research & Innovation Management Organization (IMO) was established in April 2020, with the support of the Cabinet Office's innovation enhancement program, to strengthen Chiba University's innovation and research.

By strengthening research promotion and enhancing collaboration among industry, academia and government, IMO became the university's new hub for innovation and research outputs. IMO has brought together various functions of research promotion, collaboration and outreach, in order to accelerate innovation and entrepreneurship through a number of initiatives and activities at Chiba University.

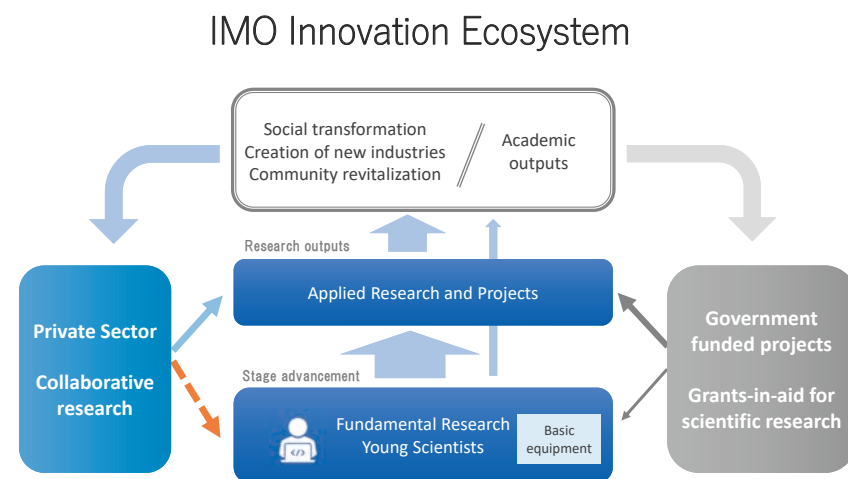


Image of the new IMO building scheduled to open in early 2021

■ IMO's Innovation Ecosystem

IMO aims at establishing an "Innovation Ecosystem" where new research outputs develop into advanced research and projects that bring in new funding from the private and public sectors.

IMO actively supports the implementation of joint research projects and contract research with the private sector;



local government and other institutions by making use of Chiba University's research outputs, intellectual property and human resources. These collaborative projects will help increase the flow of funding for indirect costs to the university, enhance fundamental research and entrepreneurship, and offer concrete steps for effective collaboration between industry and the university.

■ Utilizing Open Space for Innovation

IMO is comprised of 5 divisions as shown below:

- Strategy and Institutional Research;
- Academic Research Infrastructure Support;
- Research Promotion;
- Research Risk Management; and
- Intellectual Property Strategy.

These divisions work closely together to foster innovation and research.

New spaces for innovation and collaboration are under construction and scheduled to open in early 2021. "Open Innovation Space" and "Project Promotion Space" will be established on the



IMO's open innovation space (image)

Nishi-Chiba campus. These spaces will be utilized to promote venture businesses, cross-sectoral collaboration, research promotion and networking. IMO will also use these spaces to attract companies and businesses to open branch offices on campus.

By utilizing the role of each division of IMO and making effective use of the innovation spaces, IMO will enhance networking and collaboration among our faculty, researchers and students and with other educational institutions, researchers from local and private companies, local government, entrepreneurs and startup companies. IMO aims to create and foster an environment for innovation and university-industry collaboration.

For further information, please visit: www.ccr.chiba-u.jp

WISE Program (Doctoral Program for World-leading Innovative & Smart Education)

1 Applied Humanities Program for Cultivating Global Leaders

This program offers graduate school education in Applied Humanities within an extensive network developed in and outside of Japan, centering on the Graduate School of Humanities and Studies on Public Affairs, Chiba University.

The first focus of the program is Asia-Eurasia as a test site or developed region facing the challenge of diverse issues influencing future society in a pluralistic world. The second focus is on humanistic data science methods (Digital Humanities) with social survey statistics, multilingual text mining (Quantitative Text Analysis), and the GIS (Geographic Information System) as its three pillars.

The program helps students to comprehensively have the following two skill sets: Micro perspectives/techniques that delve into the folds of culture and sensitivity of the Asia-Eurasia region; and Macro perspectives/techniques from the viewpoint of data science (Digital Humanities). With these, the program aims to foster human resources with the strength to deal with the ever-changing world who can take the lead in the diverse environment of the future.

Network and Excellence for Program Realization

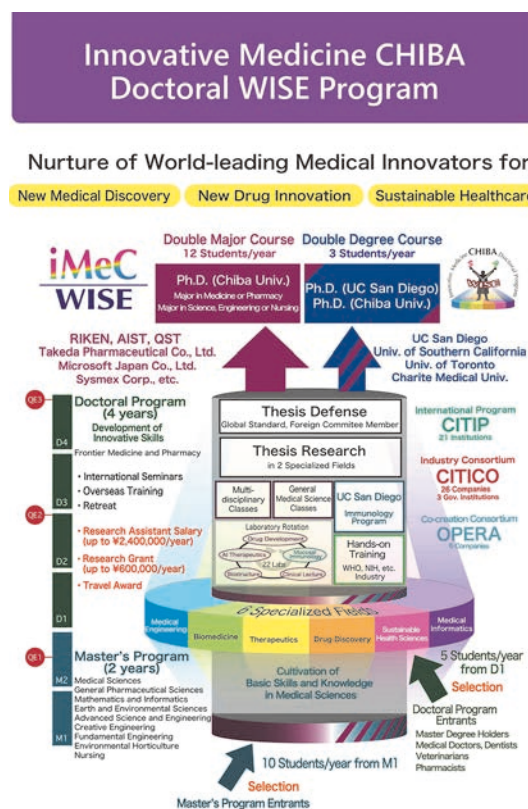
By forming an inter-disciplinary cooperation network with diverse agencies in and outside of Japan and making use of the strengths of each agency, the program creates a system that comprehensively understands the high diversity of Asia-Eurasia.

Cooperating Universities, Companies, etc.	Features (Content of education and research, affiliated organizations, project strategies, etc.)
Chiba University	Studies on global relations covering Russia and Islam Center for Relational Studies on Global Crises, Bangkok Campus (Mahidol University)
National Museum of Japanese History The Graduate University for Advanced Studies, SOKENDAI (Department of Japanese History)	Integrated Studies of Cultural and Research Resources of Japan and East Asia
Kumamoto University	Eisei Bunko Research, East Asia Historical Science as a collaborative endeavor with Anhui University
Okayama University	Research on East Asia's International Cooperation, Research of Northeast Asia such as South Korea and Northeast China
Nagasaki University	Research on East/Southeast Asia and the Netherlands
Zhejiang Gongshang University	Double Degree Program
National Research University "Higher School of Economics" (Russia)	Institute for Oriental and Classical Studies
JTB Tourism Research & Consulting Co.	Inbound strategy
Chiba Bank	Hong Kong, Shanghai, Bangkok, and other Asian markets
AEON Co., Ltd.	Aeon China, Aeon Asia

2 Innovative Medicine CHIBA Doctoral WISE Program

The Graduate School of Medical and Pharmaceutical Sciences takes a lead role in operation of Innovative Medicine CHIBA Doctoral WISE Program (iMeC-WISE), based on its more than 100-year history. iMeC-WISE implements the new graduate education system "Six Specialized Fields Education System" in cooperation with world-class academic and research institutions, including RIKEN and the University of California San Diego (UC San Diego), and many companies.

Talented graduate students with different backgrounds will major in at least two out of the six specialized fields, which are organized beyond departments and institutions. Through innovative comprehensive training with a focus on multidisciplinary close mentoring to nurture high level of broader perspective, cooperativeness, leadership and entrepreneurship, iMeC-WISE aims to foster the next generation of outstanding researchers and innovators, who will contribute to the development of medical sciences, pave the way to novel therapies and drugs, and develop sustainable healthcare systems.



Creating Innovation through Collaboration with Companies

As universities and industry work together to increase the need to create destructive and sustainable innovation, Chiba University is building an open innovation platform on campus and promoting collaboration with multiple companies.

■ Chiba Iodine Resource Innovation Center (CIRIC)

In June 2018, we opened a new research center, CIRIC, which aims to develop high-value-added iodine products and revitalize the local economy, taking advantage of Chiba Prefecture's regional characteristics, which accounts for approximately 21% of the global market share.

Chiba University has concluded a comprehensive partnership agreement by attracting iodine-related companies. CIRIC is engaged in cutting-edge R&D every day, and has already achieved a track record of 7 patent applications and 5 papers. In May 2020, we published a press release on the success of the world's first catalytic asymmetric iodoesterification.

■ Well Active Community (WACo) Co-creation Consortium

Our research project aimed at creating a healthy and active community by living without conscious effort was selected as "Program on Open Innovation Platform with Enterprises, Research Institute and Academia (OPERA)" in 2018, which is the Japan Science and Technology Agency (JST) program. And we have formed a consortium with the companies that participated in the project.

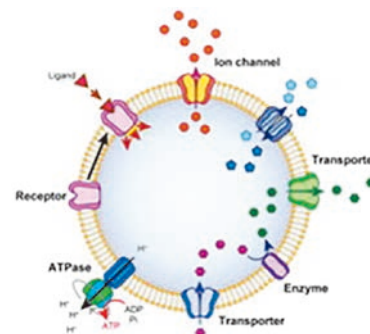
The consortium is promoting a number of initiatives under the theme of "community development to become healthy" with the aim of creating new value with high social impact that combines academic challenge and industrial innovation. It has developed into a large-scale project with a total budget of approximately 300 million yen/year from fiscal 2020.

■ Membrane Proteins Research Consortium

Membrane proteins, which transport materials inside and outside the cell and serve as sensors for the five senses, are present in the cell membranes of living organisms, and in the case of humans, it is said that there are about 10,000 kinds. By clarifying the structure in detail, we can expect results with a large social impact in various fields such as drug discovery and agriculture. For example, we may be able to create new drugs that are not affected by the evolution of viruses that are transmitted through membrane proteins.

However, due to the brittleness of its structure and its low heat resistance, it is difficult to extract the membrane proteins necessary for structural analysis, and these studies have not progressed worldwide.

Chiba University has its own technology for extracting clean membrane proteins and purifying them in large quantities, and plans to form a consortium with companies to conduct research on membrane proteins using these technologies.



Institute for Global Prominent Research

■ Research Strategy of Chiba University

Under the leadership of president Takeshi Tokuhisa, Chiba University aims to develop world-class research projects in the three areas of (1) humanities and social sciences, (2) science and engineering, and (3) life science. The university is making concerted efforts in these areas, as the “Triple Peak Challenge,” to create innovation that will pave the way for the next generation.

The university is fostering researchers to advance innovation and developing wide range of academic research that will form the basis for the integration and creation of new research areas. This strategy aims at creating a unique next-generation research and strategically promoting them through the Institute for Global Prominent Research.

■ Establishment of the Institute for Global Prominent Research

The Institute for Global Prominent Research (IGPR) was established in April 2016 as a framework to manage the university’s research strategy and support research groups with novelty and originality. IGPR promotes and supports research activities in strategic and priority research areas as well as interdisciplinary leading research projects, which were identified through institutional research (IR).

■ Overview of the Institute for Global Prominent Research

IGPR promotes research at two levels through (1) the Research Division for cultivating world-leading research and establishing a center for world prominent research, and (2) the Next Generation Research Incubator for nurturing the university’s prospective priority research areas. Each division is comprised of several research projects.

These projects have access to resources strategically allocated for IGPR. Under the leadership of the President, these resources are allocated based on the requirement of each research group and the evaluation of the projects’ progress.

In addition, IGPR aims at enhancing Chiba University’s research capability by creating capacity development programs for young researchers, and establishing a Management Division, which selects and evaluates the research projects, conducts institutional research, allocates the resources, and implements PDCA cycles.

IGPR is also conducting the Strategic Priority Research Promotion Program and the Leading Research Promotion Program as tools to enhance research activities.

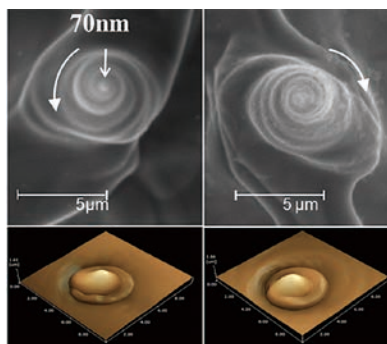
For further information, please visit: <http://igpr.chiba-u.jp/global/>

Mucosal Immunology



The Biomedical Research Facility II at UCSD accommodates research labs of Graduate School of Medicine, Chiba University.

Chiral Photonics



Left-handed

Right-handed

Hadron Astrophysics




The experiment control room in the IceCube Lab, a neutrino observatory at the South Pole

Inter-University Exchange Project

■ What is the "INTER-UNIVERSITY EXCHANGE PROJECT"?

The "INTER-UNIVERSITY EXCHANGE PROJECT" is a funding project which launched by the Ministry of Education, Culture, Sports, Science and Technology (MEXT) in 2011 to aims to foster human resources capable of being globally active, and to assure the quality of mechanisms for the mutual recognition of higher education by giving financial support to efforts for the formation of collaborative programs with universities in such countries as Asia, U.S, and Europe, that conduct study abroad programs for Japanese students and undertakes the strategic acceptance of foreign students.

1 To inspire students' interests in education, and develop students who can create new fields of study on their own. Japan-U.S. Unique Program (JUSU) using COIL*

 The program will be conducted in cooperation with four U.S. universities with unique education and research fields based on active learning through COIL. Students from both Japan and the U.S. will instruct each other in their fields of expertise. This interactive education program will encourage the development of students who can engage themselves in study that is not limited to their specialist field. *COIL: Collaborative Online International Learning
Project support period: FY2018~FY2022


2 Develop business professionals in future agricultural techniques. Future Agriculture with Russian Far east Pre-master to Ph.D. Program (FARM)

 Future agricultural techniques, which represents the "next-generation of

agricultural diversification (called the sentry industry in Japan)" is comprised of the distribution and consumption as well as production processes, the aim is to train professionals who understand future agricultural techniques, which ranges from food production to distribution and sales, and can contribute to Russo-Japanese joint enterprises in the Russian Far East.


Project support period: FY2017~FY2021

3 Development of innovation-oriented human resources in agriculture + engineering. Campus Asia Plant Environment Innovation Program (CAPE)

 Given the likelihood that industries connected with the plant environment will evolve with the addition of 6th+4th industrialization, CAPE will work with three universities in China and South Korea to develop human resources possessing skills in both horticulture (agriculture) and engineering and the ability to plan, propose, and implement plant-environment innovation.

Project support period: FY2016 ~ FY2020

4 Considering the future living with students from Central America! Post Urban Living Innovation Education and Research Program (PULI)

 PULI programs use technology and innovation to solve problems in the urban areas of Japan, Mexico and Panama. There are eight different PULI programs related to design, architecture, urban environment and horticulture. During PULI programs, students affiliated with humanities, engineering and science courses work together to execute the projects with global business perspective. PULI programs will implement the next generation, practical-

ly oriented human resources development program (Post Program) jointly in Japan and Central America.

Project Support Period: FY2015-FY2019

5 Educational experience in ASEAN! Twin College Envoys Program (TWINCLE)

 In 2012, Chiba University implemented a student-exchange program called the Twin college envoys (TWINCLE) as part of Japan's re-inventory project with the support of MEXT. The TWINCLE program has 15 partner universities from 7 ASEAN countries. This program consists of three major activities. The first is a teaching internship in a high school. The second is science educational experiences and the third is a class of Japanese culture. For university students from ASEAN countries, the program consists of three major activities as same as Japanese students. Through 9 years of program activity, we exchange more than 1,000 students. TWINCLE program was selected as a good practice of SDGs educational activity and presented on MEXT home page, 2019.

6 Studying design in Japan, the U.S., and Europe! Continents Design Education Program (CODE)

 Under CODE, students study design in the United States and Europe for one year within a new approach: a six-year study period comprised of 3.5 years of undergraduate study and 2.5 years of graduate study. The program develops globally-oriented designers who will create future industries based on a design education that reflects the special characteristics of each country. It was adopted the project for FY2011~FY2015 and received the highest evaluation. It has also been carried out continuously now as a one of innovative global programs of the Design Course.

Frontier Science Program Early Enrollment

■ Frontier Science Program

The Frontier Science Program, in which gifted students get professional education in science as regular students before graduating from high schools, is designed to foster highly creative young scientists and researchers venturing out into the world. We call for applicants in winter and in spring. Successful candidates start their study at Chiba University either from April or September. The curriculum is enriched by small-group instruction, seminars, and one month English training in Canada. The majority of alumni continued their studies at graduate schools at Chiba University or other universities. Some of them are teaching at universities or working as scientists and engineers in research institutes.

■ Six Fields

1 Physics

Physics seeks to grasp the universal laws embedded in various natural phenomena. The research subjects range widely from the microscopic worlds of elementary particles and atoms through condensed matter to stars and galaxies. We welcome young students interested in understanding the principles of Physics and aiming to become researchers.

2 Chemistry

Chemistry clarifies the essential character of materials by examining their properties, structure, and reactive propensities. It is important in daily life, advancing technology, and understanding the natural environment and living organisms. Students in this program can study physical chemistry, inorganic chemistry, analytical chemistry, environmental chemistry, organic chemistry, and biochemistry to understand the intrinsic properties and potential uses of materials.

3 Biology

Biology aims to elucidate the underlying principle of life, with a wide range of viewpoints including microscopic studies focusing on biomolecules such as DNA and protein, and macroscopic ones addressing biological systems such as cells, organisms, community, and ecosystems. Through the program enabling to experience latest researches even in the first grade, we expect students to become researchers in the future.

4 Plant Biology

Plant Biology seeks to elucidate biological events and the structure and function of the biomolecules in plants and micro-organisms. Focusing on plant bio-resources and bio-molecules, research projects aim to clarify cellular mechanisms and molecular function through the use of chemical and biological methods.

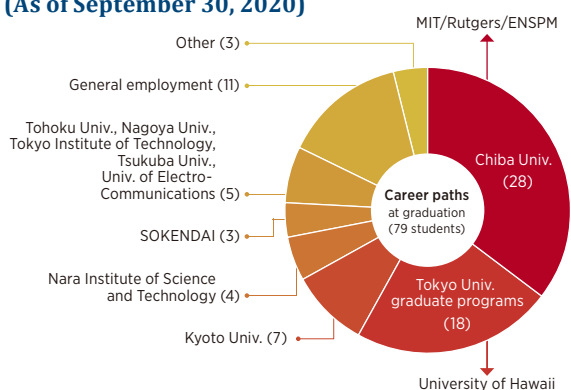
5 Engineering

Engineering comprises a wide range of special fields including architecture, urban environment systems, industrial design, mechanical engineering, medical engineering, electrical and electronic engineering, materials science, applied chemistry and biotechnology, and information engineering. Students are encouraged to probe the frontiers of technology.

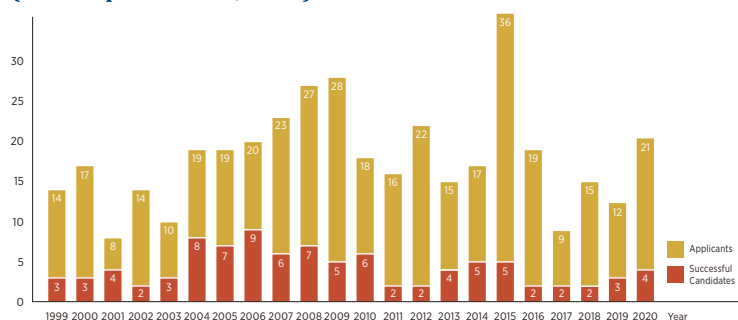
6 Human Sciences

Human sciences utilize methods based on the natural sciences for analyzing the human mind, culture, and society. For example, this subject explores from the viewpoint of information processing such philosophical questions as “what makes one person distinct from all others?” Similarly, the ability to interpret the surrounding environment from what we perceive is related to the functions of eyes and brain in this new science.

Affiliation of Alumni after Graduation (As of September 30, 2020)



Statistics of Applications and Successful Candidates by year (As of September 30, 2020)



University Library / Academic Link Center

The University Library/Academic Link Center establishes academic links through the University Library, the Institute of Media and Information Technology (Current: the Institute of Management and Information Technologies), and the Center for General Education (Current: Center for the Promotion of Higher Education) and conducts various activities to nurture students and graduate students with abilities to select, process, and utilize knowledge for their long-life learning. Since 2017, the new goal has been added to foster “knowledge professionals” with deep expertise and comprehensive thinking. The Academic Link Center provides not only a quiet study environment

for students but also various venues where they can engage in discussions, give presentations, obtain printed and electronic educational materials and content, and receive human support in their studies. The reconstruction of the Horticultural Science Library enables us to commence the new learning support activities under the Academic Link concepts in Matsudo Campus from 2019. The Academic Link Center was selected as Joint Usage / Education Center in July 2015 and also certified as Brush up Program for professional(BP) in April 2019 by the Ministry of Education, Sports, Culture, Science and Technology. The Academic Link Center proceed with the Academic Link Professional Staff development program for educational and learning support (ALPS program).



Active Learning Spaces



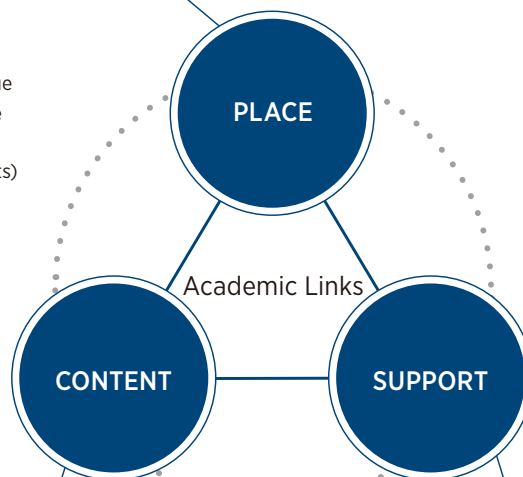
Content Lab



Teaching Hub

Active Learning Spaces

Provide appropriate places where students can study in groups or individually, or present results of their own study while taking advantage to the maximum of available human resources (teachers, librarians, and other students) who will provide various forms of support including materials, content, information and communications technology as well as study support.



Content Lab

Enhance the PathFinder, to provide information about useful publications and websites, which enables students to study the classes' theme deeply. Additionally, digitalize materials provided through the PathFinder and teaching materials used in the classes, record classes, and smoothly provide these useful contents through a learning management system.

Purpose

To create thinking students

Teaching Hub

Conduct faculty development to assist in the operation of learning management systems, provide for training in electronic teaching materials and communications technologies, and train student assistants (SA) who will provide support at active learning spaces.

3

functions
for creating thinking students

Honey Bee Project

This project began in 2008 at Center for Environment, Health and Field Sciences for the purpose of educational research, profitable business, and contribution to the local community. It has been active as a university-wide project since 2018. In addition to the ecological forest in Kashiwanoha Campus, European honey bees are bred on the rooftops of Science and Technology Building in Nishi-Chiba Campus and School of Medicine in Inohana Campus.



Beekeeping at Kashiwanoha Campus ecological forest

■ Educational Research

Educational research activities include “development of honey evaluation methods” which investigate the plants that bees collect honey from by DNA analysis, “designing of beekeeping” that develops products such as beekeeping boxes, “urban beekeeping and greening” that investigates the relationship between urban beekeeping and greening plants, and “environmental education” to think about urban environment through



Beekeeping at Inohana Campus

beekeeping. In order to study beekeeping, it is necessary to examine various fields such as agriculture, engineering, and social sciences. Hence researchers from several departments such as Center for Environment, Health and Field Sciences, Faculty of Engineering, and College of Liberal Arts and Sciences are collaborating on this project.



Next-generation beekeeping box management in Nishichiba campus

■ Profits

About 1,000kg to 2,000kg of honey is collected every year as a by-product of these educational research activities. After packaging honey for raw consumption, Chiba University sell them to local residents at stores on campus, Sogo Chiba, and Chiba Yakult Sales Corporation. Furthermore, Chiba University, Japanese and Western confectionery companies in Chiba prefecture, Renkado (Matsudo) and Montpellier (Ichikawa) are jointly developing products such as dorayaki and donuts that contain honey. Such sales activities can be a good opportunity for many people to know about this project. Profits from the sales of these products are effectively used for research and to expand the activities of this project.



Honey sold to neighboring citizens



Donuts developed with a local company using honey

■ Contribution to the Local Community

This project is also engaged in activities that would contribute to the local community. By purchasing honey or participating in beekeeping related events, it creates opportunities for local residents to widely learn about these activities conducted by Chiba University. We continue to enhance product sales and related events, and aim to contribute to the local community through local production for local consumption.



Honeybee related event

Inohana Campus High Functionality Initiatives and Inohana IPE

Inohana Campus High Functionality Initiatives to foster next-generation medical personnel and to create the “Therapeutics” Center

Japan is facing two major changes to its social structure: an aging society with fewer children and globalization. These changes pose urgent challenges to Japanese national universities with medical-related faculties. Such institutions will need to be first responders to the shifting expectations of society. Specifically, these universities need to train medical professionals to be leaders capable of addressing the diversifying health care needs of next-generation medicine. Given these situations, Chiba University considers the promotion of the new academic field of “Therapeutics” as its highest priority. This emerging field is where systematic research on preventive, diagnostic, and curative theories and a development of novel treatments are conducted. To achieve this goal, we intend to strengthen the high functionality of Inohana

Campus further: As the only campus that accommodates three distinct medical-related faculties of Medicine, Pharmaceutical Sciences, and Nursing, as well as the University Hospital, the Inohana Campus reinforces the university resource allocation with the Future Medicine Education and Research Organization at the core.

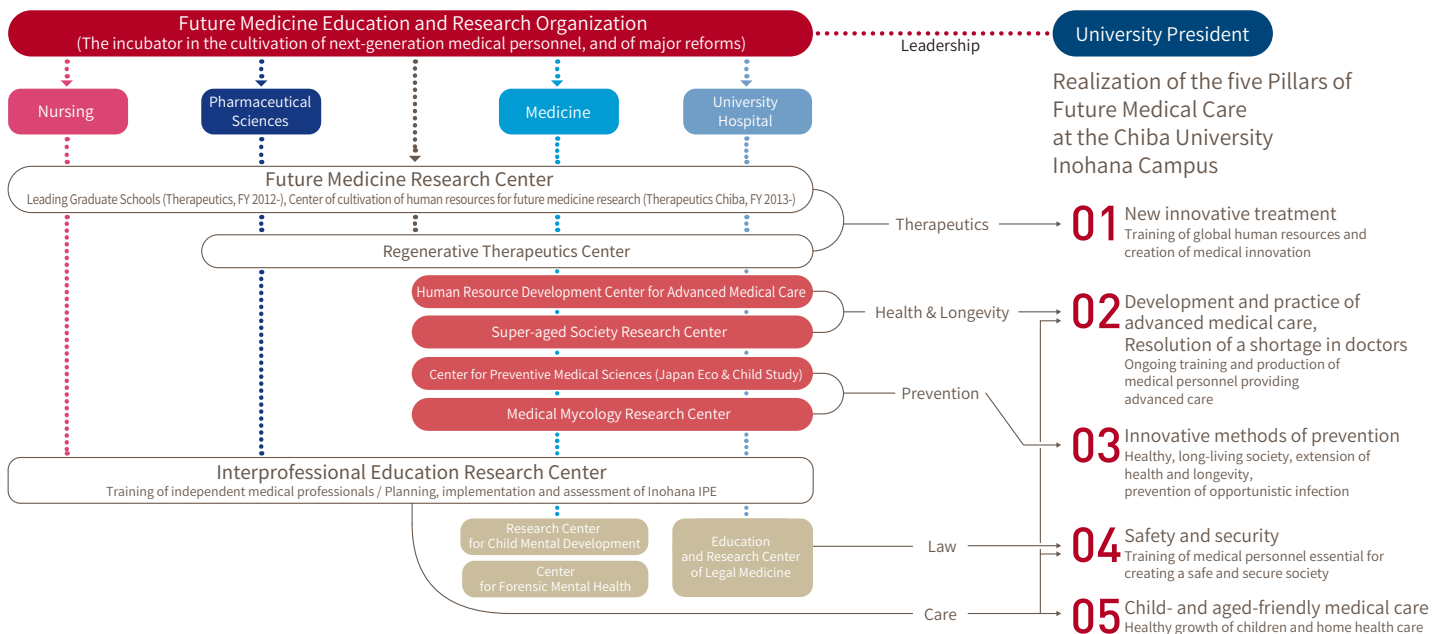
Inohana IPE is an innovative undergraduate program in Japan

Inohana Interprofessional Education (IPE) is an educational program conducted through the cooperation and collaboration of the School of Nursing, School of Medicine, and Faculty of Pharmaceutical Sciences since 2007. It is fostering the development of independent and organizational medical professionals who can provide patient- and client-centered treatment and care in cooperation and collaboration with other professionals.

Among the notable features of IPE are the study of four multi-level four-year subjects that are set as compulsory subjects in the School of Nursing, School of Medicine and Faculty of Pharmaceutical Sciences where continuation of improvement is based on the evaluation of study results, as well as the adoption of active learning and small group study. With the cooperation of the University Hospital, hospitals nearby, local clinics, dispensing pharmacies, visiting nurse stations, and local comprehensive care centers, students also participate in work experience relevant to their field.



First-year students : group work



Environmental ISO

■ Student-led environmental initiatives that are valued around the world



ISO 14001

1 Certification in international standards for environmental and energy management systems

In 2005, Chiba University acquired ISO14001, which is the international standard for Environmental Management Systems (EMS). Following this, in 2013, it became the first Japanese university to acquire ISO50001, the international standard for energy management, and today operates the most advanced environmental management system among Japanese Universities. Under the environmental policy, Chiba University declares that the system will be mainly operated by the students. Therefore the Student Committee for EMS was established in 2003 in the official organization of the University.

2 Creation and operation of university systems led by the Chiba University Students Committee for Environmental Management System

Of particular note is the fact that students have been at the helm of these ISO initiatives. The Student Committee has 200 members and many departments and teams. And on the EMS PDCA cycle,

it plays core roles. Including; making drafts of environmental objectives and plans for the university, lecturing about EMS at basic training, serving as internal auditors, and editing sustainability reports. In addition, they carry out various activities such as a used book market, making posters for raising awareness of the environment, a green curtain, and compost, holding eco classes for young children, making community gardens and so on. There is an Accreditation and Qualification system. Students enrolled in Environmental Management Practical Training I - III and learned EMS and internal audit, and have carried out various activities as a course for three years. Students build not only knowledge but also business skills. For example, how to compose emails, make appointments, run events, and so on. So they get communication skills and practical business skills. Students who continue these activities for three years receive qualification as a Chiba University Environmental Energy Management Practitioner from the university, which they can write on resumes. Furthermore, the Student Committee was recognized as NPO in 2009. The members are all students. They are acting as both a committee and an NPO. In recent years, the Student Committee has also implemented projects in cooperation with companies. The range of activities has expanded greatly, including environmental education for local children, sea and forest conservation activities, large-scale environmental events, and presentations at international conferences. Chiba University was awarded "Student Leadership Division" of "Sustainable Campus Excellence Awards" by the International Sustainable Campus Network (ISCN) in 2017 and "Student Engage-

ment" category of "International Green Gown Awards" by the EAUC in 2018 and 2019. It was evaluated worldwide!



Responsible for lecturer of environmental ISO basic training at the faculty meeting



A community garden



Presenting an environmental picture story show at a kindergarten



Seaweed regeneration and beach cleaning activities

Regional Cooperation Efforts by the Office of Community and Innovation (OCI)

■ About the OCI



The OCI was established at Chiba University in 2015 to promote collaborative projects between universities and regions under the COC and COC+ programs of the Ministry of Education, Culture, Sports, Science and Technology. Since the end of these programs in 2019, the OCI has continued to operate and coordinate educational, research, and social contribution projects related to regional revitalization with local governments and companies. In addition, the OCI has promoted international collaboration by establishing a new international student exchange program in cooperation with partner schools in Taiwan.

■ Regional cooperation projects with local governments and companies in Chiba Prefecture

The OCI conducts educational and research activities through industry-government-academia collaboration with local governments, local companies, and public institutions in the municipalities of Yokoshibahikari, Nagara, Minamiboso, and Shibayama.



In project-based learning courses, students propose solutions to problems related to tourism, health, and immigration. In addition, the OCI works to secure external funding for education and joint research with local governments and companies from sources such as the Japan Science and Technology Agency matching fund program OPERA. In 2018, the OCI established a research venture called Miraino Lab, Inc. to promote regional revitalization by creating an environment for students in various fields to continue their work in the community.



■ Local Innovation Studies minor

The OCI offers a Local Innovation Studies minor, a comprehensive course of study that provides students with a wide range of knowledge and decision-making skills for solving regional issues. The program employs a system of incremental learning in which students' involvement with their chosen region increases gradually every year.



Students who complete this minor go on to careers as civil servants, consultants, researchers, and other professionals working in local industry or promoting a regional orientation. In addition, students are expected to make use of the OCI's role as an incubator and become entrepreneurs who start community development companies and NPOs.

■ Expansion to international collaboration

In collaboration with the Chiba University ENGINE program, the OCI has launched an initiative to practice internationally oriented education in cooperation with Taiwanese and other overseas exchange partner schools. "Taiwan-Chiba Local PBL" is a new course in which students from Chiba University can study abroad at one of five Taiwanese universities to work on solving regional issues while learning through practice how to promote regional revitalization and realize sustainable regional development. At the same time, students from Taiwan can study at Chiba University and take courses offered by the OCI to help them tackle regional issues from a global perspective.

03

Undergraduate

- 03-1** College of Liberal Arts and Sciences
- 03-2** Faculty of Letters
- 03-3** Faculty of Law, Politics and Economics
- 03-4** Faculty of Education
- 03-5** Faculty of Science
- 03-6** Faculty of Engineering
- 03-7** Faculty of Horticulture
- 03-8** School of Medicine
- 03-9** Faculty of Pharmaceutical Sciences
- 03-10** School of Nursing

Undergraduate

Chiba University consists of 10 undergraduate schools, and 10,473 students are studying.



Liberal Arts and Sciences

<http://www.las.chiba-u.jp/english/index.html>

E-mail las-soumu@chiba-u.jp



The College of Liberal Arts and Sciences (CLAS), established in 2016, is the newest of the ten faculties and schools that comprise the Chiba University. Its principal mission is to contribute to solving complex global issues, for which no single field of study can provide adequate answers, and another mission is to help shape our global society. Through teaching and research various scientific fields, the CLAS expands our knowledge, theory and practice in the most fundamental questions in the humanities, social, natural and life sciences. With the 45 tenured faculty members and some 20 other faculty members of the Chiba University, the CLAS play a leading role in educational reforms of our whole university.



03-2

Faculty of

Letters

<http://www.l.chiba-u.ac.jp/en/index.html>

E-mail gae2343@office.chiba-u.jp

- Division of Behavioral Sciences
- Division of History
- Division of Japanese and Eurasian Studies
- Division of International Languages and Cultures



The Faculty of Letters aims to foster globally-minded students who, with the ability to process information and analyze a wide variety of media, cultivate a keen interest in human beings, societies and cultures. Each student is expected to develop his/her own research topic of interest, and to develop the problem-solving abilities required to contribute as a member of the global community.



03-3

Faculty of

Law, Politics and Economics

<http://www.le.chiba-u.jp>

E-mail gae2343@office.chiba-u.jp

- Major in Law
- Major in Economics
- Major in Management and Accounting
- Major in Politics and Policy Studies



The Faculty of Law, Politics and Economics is the sole center of social sciences both in education and in research at Chiba University. Students can choose their major from four categories: Law, Economics, Management and Accounting, and Politics and Policy Studies.

Students in the Faculty acquire the ability to analyze and to tackle social problems in the comprehensive and interdisciplinary manner by developing their skills to understand the mechanism and phenomena of contemporary societies.



03-4

Faculty of

Education

https://www.education.chiba-u.jp/home_e

E-mail hag2505@office.chiba-u.jp

- Elementary School Teachers Course
- Junior High School Teachers Course
- Elementary and Junior High School Teachers for Specialized Subjects
- English Teachers Course
- Infant and Kindergarten Teachers Course
- Education of Children with Special Needs Teachers Course
- School Health Nursing (Yogo) Teachers Course



The Faculty of Education dates back to the year 1872, and has the longest history of all the faculties in this university. Our main aim is to train our students to undertake leading positions in a wide range of educational institutions. In order to train students and to develop educational leaders to meet the requirements of public education in Japan, the Faculty of Education consists of the Training Division for School Teachers, which is divided into 7 courses. To meet the diverse educational needs and problems of a rapidly changing society, the Faculty also has four affiliated schools and two research centers.

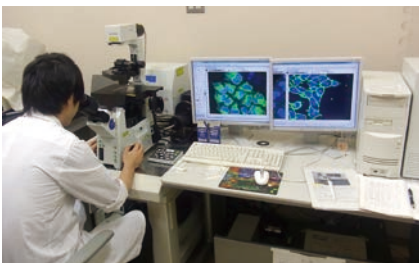
03-5
Faculty of
Science

<http://www.s.chiba-u.ac.jp/>
E-mail iac2871@office.chiba-u.jp

- Department of Mathematics and Informatics
- Department of Physics
- Department of Chemistry
- Department of Biology
- Department of Earth Sciences



The Faculty of Science comprises five departments and is active in both education and research. It offers a diversity of programs ranging from introductory courses for absolute beginners, via multi-disciplinary subjects, to pioneering sciences and their applications for more advanced learners.



The Faculty helps students become all-around scientists, experts and/or assets to industry and communities.

03-6
Faculty of
Engineering

<http://www.f-eng.chiba-u.jp/en/index.html>
E-mail mah3034@office.chiba-u.jp

- Department of Architecture
- Department of Urban Environment Systems
- Department of Design
- Department of Mechanical Engineering
- Department of Medical Engineering
- Department of Electrical and Electronic Engineering
- Department of Materials Science
- Department of Applied Chemistry and Biotechnology
- Department of Information Engineering



The Faculty of Engineering consists of nine departments: Departments of Architecture, Urban Environment Systems, Design, Mechanical Engineering, Medical Engineering, Electrical and Electronic Engineering, Materials Science, Applied Chemistry and Biotechnology, and Information Engineering. Most of the academic staff in the Faculty is also fully responsible for research and education within the two-year Master's and the three-year Doctoral Programs in the Graduate School of Science and Engineering.

03-7
Faculty of
Horticulture

<http://www.h.chiba-u.jp/english/index.html>
E-mail zaf8703@office.chiba-u.jp

- Department of Horticulture
- Department of Applied Biological Chemistry
- Department of Environmental Science and Landscape Architecture
- Department of Food and Resource Economics



The Faculty of Horticulture, which is located on top of a scenic hill in Matsudo City, has major academic and international contributions in horticulture and landscape science since it was first founded in 1909. It is the only faculty known by the name of horticulture among all Japanese national universities.



Specialized academic staff endeavors to train students who can contribute to the successful management of natural resources as well as the administration and the marketing of related industries. And our academic staff and students together work with issues on environmental protection and the creation of sound living environments.

Medicine

<https://www.m.chiba-u.ac.jp/en/>
E-mail inohana-koho@chiba-u.jp



The history of Chiba University School of Medicine can be traced back to 1874, when its predecessor was founded as a private hospital through donations from the local community. In 1876 it became a prefectural institution with medical teaching facilities and was formally named the Chiba Public Hospital. In 1923 it became the Chiba Medical College, and in 1949 was incorporated into the School of Medicine at Chiba University. Alumni from this school have contributed greatly to the advancement of medicine in Japan. Faculty members of the school belong to the Graduate School of Medicine and the University Hospital. Every year, 117 students are admitted to the School of Medicine, which requires six years of attendance.

Pharmaceutical Sciences

<http://www.p.chiba-u.jp/e/index.html>
E-mail inohana-koho@chiba-u.jp

- Department of Pharmacy
- Department of Pharmaceutical Sciences



The Faculty of Pharmaceutical Sciences was founded as the Department of Pharmacy in the Medical School of the First Senior High School in 1890, and is the oldest pharmaceutical faculty among Japanese national universities. Since then, the Faculty has greatly contributed to the development of pharmaceutical sciences in Japan. The Faculty consists of two departments: the Department of Pharmacy (six-year education program) and the Department of Pharmaceutical Sciences (four-year education program). The graduates from the Department of Pharmacy are qualified to take the national examination for the pharmacist's license.

Nursing

<https://www.n.chiba-u.jp/english/index.html>
Email inohana-koho@chiba-u.jp

- Department of Nursing



The School of Nursing has dedicated to assuring humanistic and quality nursing care for individuals, families and communities. Since its establishment in 1975, the School has produced a large number of nurse leaders and is acknowledged to be the leading nursing school in Japan.



The School of Nursing offers a program leading to the Bachelor of Science in Nursing. The School also offers an RN-BSN option for registered nurses with an associate's degree or diploma in nursing. The BSN program aims to prepare nurse leaders of the future. Upon successful completion of the required courses, graduates are qualified to take the national licensure examinations for nurses, public health nurses, and/or midwives.



- 
- 04-1 Graduate School of Humanities and Studies on Public Affairs
 - 04-2 Law School
 - 04-3 Graduate School of Education
 - 04-4 Graduate School of Science and Engineering
 - 04-5 Graduate School of Horticulture
 - 04-6 Graduate School of Medical and Pharmaceutical Sciences
 - 04-7 Graduate School of Nursing
 - 04-8 Graduate Degree Program of Global and Transdisciplinary Studies

04 Graduate

Graduate

Chiba University consists of 8 Graduate schools, and 3,359 students are studying.



04-1 Graduate School of

Humanities and Studies on Public Affairs

<http://www.gshpa.chiba-u.jp/en.html>
E-mail gah2352@office.chiba-u.jp



○Master's Program

Program	course
Humanities	Foundational Cultural Sciences
	Study of Multicultural CoExistence
	Advanced skills of Education and Learning Support
Studies on Public Affairs and Social Sciences	Studies on Public Affairs
	Economics and Management Economics in English

○Doctoral Program

Program	course
Humanities and Studies on Public Affairs	Humanities
	Studies on Public Affairs Social Sciences

Graduate School of Humanities and Studies on Public Affairs will aim at cultivating expertise and nurturing next-generation global human resources who will have a public-oriented perspective that focuses on global and local societal issues and can solve issues that will confront society in the future. Students can learn advanced knowledge/skills by taking subjects from a vast area of social sciences and humanities, and he/she will integrate it on his/her own forms.

04-2

Law School

<http://www.lawschool.chiba-u.jp>
E-mail gai2349@office.chiba-u.jp



The Law School is a professional graduate school lasting a period of two to three years, separate from other existing faculties and graduate schools of the University. By providing professional education committed to connecting jurisprudence or legal theories with legal practice, the Law School aims to educate students to be legal professionals, capable of thinking both flexibly and creatively, possessing not only specialized knowledge of the law but also a good understanding of humanity. Law School consists of two courses, namely, a three-year course and a two-year course. The former is mainly for those who do not yet have basic legal knowledge. The latter is for those who have already acquired such knowledge.

In addition to being awarded the degree of Juris Doctor, students who have successfully completed either course are qualified to sit for the National Bar Examination which is held in May annually. As of 2020, we start a new program based on the agreements with the departments of law in Chiba University, Meijigakuin University and Kagoshima University. This program makes it possible for students who graduated from any one of departments with a special legal course to take the admission test of a two-year course in Chiba law school.



04-3

Graduate School of

Education

https://www.education.chiba-u.jp/home_e

E-mail hag2505@office.chiba-u.jp

○ Master's Program

Division of School Education

- Division of Education and Human Development
- Division of Interdisciplinary Curriculum Development
- Division of Language, Human and Social Science Education
- Division of Mathematics, Science and Technology Education
- Division of Fine Arts, Music, Health and Physical Education

○ Division of Advanced Professional Development in Education (Professional Degree Course)

In the Graduate School of Education (Master's Program), the aim is to train students in the theory of educational research, to develop their creativity, and to promote a deeper understanding of their particular academic discipline. The Division of Advanced Professional Development in Education (Professional Degree Course) offers training in systematic advanced professional knowledge regarding school management or students' counseling for teacher leadership candidates, and aims to develop influential teachers who have powerful leadership and performance competencies to support modern Japanese schools. Furthermore, the United Graduate School of Education, which offers a three-year Doctoral Program, has been established through the cooperative efforts of Tokyo Gakugei University, Saitama University, Chiba University and Yokohama National University. Many alumni are working in universities and institutes as researchers and professors.



04-4

Graduate School of

Science and Engineering

<http://www.se.chiba-u.jp/en/index.html>

Science

E-mail iad2880@office.chiba-u.jp

Engineering

E-mail kougaku-daigakuin@office.chiba-u.jp



○ Master's and Three-year Doctoral Program

Division	Course
Mathematics and Informatics	Mathematics and Informatics
	Applied and Cognitive Informatics
Earth and Environmental Sciences	Earth Sciences
	Environmental Remote Sensing
	Urban Environment Systems
Advanced Science and Engineering	Physics
	Materials Science
	Chemistry
	Applied Chemistry and Biotechnology
Creative Engineering	Biology
	Architecture
	Imaging Sciences
Fundamental Engineering	Design
	Mechanical Engineering
	Medical Engineering
	Electrical and Electronic Engineering

The purpose of this graduate school is, in the fields of natural science and engineering, to nurture high-level professionals or leading researchers with the wide knowledge, the deep specialty and the problem-solving ability that can overlook both of science and engineering, and cause mutual concerts of them. That is, we seek to nurture the human resources who acquired the knowledge and ability for the investigation of truth in natural scientific field, and human prosperity and sustainable social development by engineering ways based on natural sciences.



04-5

Graduate School of

Horticulture

<http://www.h.chiba-u.jp/english/index.html>

E-mail zaf8703@office.chiba-u.jp



○ Master's and Doctoral Programs

● Environmental Horticulture

Course	Program
Horticultural Science	Horticultural Plant Production and Breeding
	Environmental Science for Bioproduction
	Applied Biological Chemistry
	Food and Resource Economics
Landscape	Landscape Planning
	Landscape Design
	Landscape Management
	Landscape System Science
	Landscape Resource Science
	Environment and Human Health Sciences

The Graduate School of Horticulture conducts education and research encompassing all aspects of "Horticulture, Food and Landscape" with interdisciplinary and international perspectives. With this aim, our education and research programs consist not only of natural sciences but also of social sciences and humanities, such as: cultivation, plant breeding, biotechnology of bioresources, landscape design and engineering, human health and welfare, environmental science for sustainable cities and nature conservation, food system studies, and environmental and development economics. We offer a two-year Master's program and a three-year Ph.D. program.

The Graduate School of Horticulture intends to attract the best students in the field both domestically and internationally. In addition to daytime classes, we offer evening classes intended for part-time students with full-time jobs.



04-6

Graduate School of

Medical and Pharmaceutical Sciences

E-mail inohana-koho@chiba-u.jp



- Two-year Master's Program
In Medical Sciences and General
Pharmaceutical Sciences
- Four-year Doctoral Program
In Frontier Medicine and Pharmacy
In Innovative Preventive Medicine
- Three-year Doctoral Program
In Frontier Pharmaceutical Sciences

The Graduate School of Medical and Pharmaceutical Sciences was established in 2001 under the innovative integration program between the Graduate School of Medicine and the Graduate School of Pharmaceutical Sciences. This integration enables graduate students to learn advanced knowledge of both medicine and pharmacy.



04-7

Graduate School of

Nursing

<http://www.n.chiba-u.jp/english/index.html>

Email inohana-koho@chiba-u.jp



- Master's & Doctoral Programs
 - Departments:
Frontier Practice Nursing, Life Innovation Nursing, and Cultural Frontiers of Nursing
- Three-year Master's Programs
 - Nursing System Management:
Hospital Nursing System Management, Community Health Nursing System Management, Long-Term Care Facilities Nursing System Management, Nursing administration & Evaluation, and Continuing Education & Policy management in Nursing
- International Program for Nursing Science (Master's & Doctoral Degrees)
- Disaster Nursing Global Leader Degree Program



04-8

Graduate Degree Program of

Global and Transdisciplinary Studies

<http://www.las.chiba-u.jp/transdisciplinary/english/index.html>

E-mail soukoku-gdp@chiba-u.jp



Graduate Degree Program of Global and Transdisciplinary Studies is the first inter-graduate degree program in Japan, established in 2020 in collaboration with Graduate School of Humanities and Studies on Public Affairs and the Graduate School of Science and Engineering at Chiba University. It aims to encourage and promote programs in graduate education that are responsive to changing global social circumstances. We offer areas of study such as Migration and Refugee Studies, STS (Science, Technology, and Society) Studies, and Environmental Studies.

Self-designed education and transdisciplinarity are the distinctive elements of this degree program. We expect our students to design their knowledge and expand their study scope by transdisciplinary approaches that require collective, innovative, and dynamic research strategies to transcend the boundaries of traditional and conventional fields.

One of the goals of this degree program is to create intellectual leaders who can take the lead in solving intricate and challenging problems of the changing global societies.

05 Center

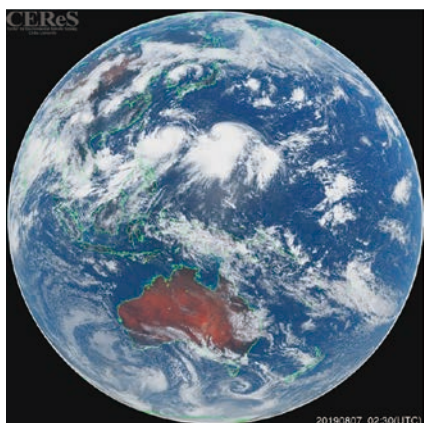
- 05-1** Center for Environmental Remote Sensing (CEReS)
- 05-2** Medical Mycology Research Center (MMRC)
- 05-3** Center for Analytical Instrumentation
- 05-4** Institute of Management and Information Technologies (IMIT)
- 05-5** Center for Frontier Science
- 05-6** Center for Relational Studies on Global Crises
- 05-7** Marine Biosystems Research Center
- 05-8** Soft Molecular Activation Research Center (SMARC)
- 05-9** Molecular Chirality Research Center (MCRC)
- 05-10** Center for Frontier Medical Engineering
- 05-11** Center for Environment, Health and Field Sciences
- 05-12** Biomedical Research Center
- 05-13** Center for Forensic Mental Health
- 05-14** Center for Preventive Medical Sciences
- 05-15** Future Medicine Research Center (FMRC)
- 05-16** Research Center for Regenerative Therapeutics
- 05-17** Research Center for Child Mental Development
- 05-18** Plant Molecular Science Center
- 05-19** Academic Link Center
- 05-20** Venture Business Laboratory
- 05-21** Radioisotope Research Center
- 05-22** University Hospital



05-1

Center for Environmental Remote Sensing (CEReS)

<http://www.cr.chiba-u.jp/english/index.html>
Email rimosen@office.chiba-u.jp



Himawari-8 satellite image

The Center for Environmental Remote Sensing (CEReS), established in 1995, conducts researches on remote sensing science and technology, applying remote sensing to various environmental problems including climate change.

Its research activities are categorized into three programs; (1) Innovation in remote sensing technology and algorithms, (2) Integrated use of geo-information, and (3) Advanced application of satellite remote sensing.

CEReS largely contributes to the research community by providing satellite data (e.g., Himawari-8), ground observation data (e.g., SKYNET), and geospatial data (e.g., CEReS Gaia).

CEReS is a nationwide and worldwide research organization in remote sensing studies. In 2010 MEXT (Ministry of Education, Culture, Sports, Science, and Technology) authorized CEReS as one of the Joint Usage/ Research Centers (JURC) for promoting the field of environmental remote sensing. It is recognized as an "Asian Hub of remote sensing" through active joint researches and frequent exchange of researchers and students.

05-2

Medical Mycology Research Center (MMRC)

<http://www.pf.chiba-u.jp/eng/>
E-mail inohana-koho@chiba-u.jp



The Medical Mycology Research Center (MMRC) is the only research institution in which comprehensive studies on fungal infection and pathogenic fungi are conducted in Japan. The MMRC was established in 1987 as a nation-wide collaborative organization in Japan, and authorized by the Minister of Education, Culture, Sports, Science and Technology (MEXT) as a Joint Usage/ Research Center in 2010. The ultimate goal of the MMRC is to overcome refractory infectious diseases including mycosis by seeking diagnostics therapeutic and preventive measures through investigation of the pathogenesis of the diseases and the host defense mechanisms. In light of the importance of microbial genetic resources, the unit for collection of pathogenic fungi and actinomycetes has been established to reinforce the project to preserve microbial resources. The MMRC was designated by the MEXT as the core organization of "National BioResource Project (NBRP)-Pathogenic eukaryotic microorganisms" and has established a firm position as the facility to preserve genetic resources of pathogenic fungi and actinomycetes.

05-3

Center for Analytical Instrumentation

<http://www.cac.chiba-u.ac.jp/en/>
E-mail cai-network@chiba-u.jp



The Center for Analytical Instrumentation (CAI) was established in 1978 as Chemical Analysis Center.

The main purpose of CAI is to provide a wide use of shared instruments for scientific analysis such as NMR, MS, XRD, TEM, SEM and so on to researchers and students (not only in Chiba university). The basic and advanced instruments in CAI are used in broad scientific fields, chemistry, material science, biochemistry and so on. We also give requested measurements, technical supports, and educational trainings. We aim at also the research development of the scientific analysis techniques.

Collaborative studies with other universities or industries are proceeding. Moreover, we promote and support the effective utilization of scientific instruments in Chiba University.

05-4

Institute of Management and Information Technologies (IMIT)

<http://www.imit.chiba-u.jp/english/index.html>
E-mail info_imit@ML.chiba-u.jp



The Institute of Management and Information Technologies (IMIT) was established in April 2013 as the fourth generation of the computing center of the university. The institute traditionally services high performance computing and campus networking. Additionally, the institute collaborates with university administration on the development of information and communication technology for education and researches in the university. The institute has 5 divisions,

- Institutional Researches and Development: For the support of information and communication technology in university managements and the development of institutional research methodologies and applications
- Low and Security for ICT: For the support and development of low and security issues of information technology applications in education, researches and university management
- ICT for Education: For the supports of information and communication technology in education activities
- Academic Support: For the supports of information and communication technology in research activities
- High Performance Computing and Campus Networking: For service of HPC environment to the university and development of new computational science and engineering methodology

05-5

Center for Frontier Science

<https://www.cfs.chiba-u.jp/en/index.html>
E-mail cfs-info@chiba-u.jp



The Center for Frontier Science (CFS) administers the Frontier Science Program (FSP), which is open to gifted students permitted to enter Chiba University before graduating from high school. The policy of CFS is to encourage talented students to become scientists in the natural sciences, especially physics, chemistry and plant biology, and in engineering and the human sciences. Since we believe that some special measures are needed for this purpose, special seminars for the above five fields are delivered to the CFS students in order to stimulate their interest. Beside these seminars, some liberal arts seminars are also arranged. CFS also has strong links with high school teachers, and exchanges opinions with them on education systems for young people. This is not only to seek better educational methods in the FSP, but also to prevent young people from losing their interest in science, which we think is a large problem in the Japanese educational system. CFS holds omnibus seminars to foster the frontier spirit to challenge a new subject. The seminars are open to the public, and some of them are given in English.



05-6

Center for Relational Studies on Global Crises

<http://www.chiba-u.ac.jp/crsgc/gblcrss.html>



Centre for Relational Studies on Global Crises (RSGC) was established in April 2017, as a first University center for social and human sciences. The RSGC center aims to be a hub for establishing a new research area called “Relational Studies on Global Studies” in Chiba University, where works a core center of the five years Grant-in-Aid for Scientific Research on Innovative Areas (Research in a proposed research area) since July 2016.

The RSGC project aims to revitalize human and social science in order to solve today’s global crisis seriously, as we have been witnessing unprecedented patterns of conflicts, clashes, and cross-border social and political networks that synchronize, interact and inter-relate, since the beginning of the 21st Century. Admitting that the existing academic paradigm has failed to provide a proper and comprehensive analytical framework to clarify the mechanism and solution to this unexpected crisis, we need to introduce new perspectives in order to be able to analyze various factors that shed light on relational aspects. Our purpose is to search for new interdisciplinary and cross-cutting academic approaches by combining various analytical methods in the human, social and natural sciences. And to conduct joint researches with prominent scholars from various institutions as well as departments in and out of the Chiba University. So as to get a comprehensive grasp on this “new global crisis”, find a way out, and pursue a future global society based on co-existence with diverse social, political, economic and cultural groups.

05-7

Marine Biosystems Research Center

<http://marine.biosystems.chiba-u.jp/english.html>
E-mail bee3832@office.chiba-u.jp



The Marine Biosystems Research Center (MBRC) was established in 1999 to be shared by students and researchers for research and educational purposes.



In addition to being University Center for marine biosystems research, the MBRC aims at making a significant contribution to nation-wide research efforts in related fields by providing information both in and out of the university.



05-8

Soft Molecular Activation Research Center (SMARC)

<https://smarc.chiba-u.jp/>
E-mail ciric-network@chiba-u.jp



“Soft Molecular Activation Research Center (SMARC)” has been established in April 2018 from a Next Generation Research Incubator Program “Activation of Soft Molecules directed toward Intelligent Materials,” which is promoted by the Institute for Global Prominent Research (IGPR), Chiba University. SMARC focuses on the catalytic development of the novel soft-elements containing materials. Three key concepts “soft π -electron, soft halogen (I), and soft metals” of the catalyst design will be integrated into a new reaction sphere (e.g., ionic liquids) for activating the soft elements, and for creating the intelligent soft molecules.

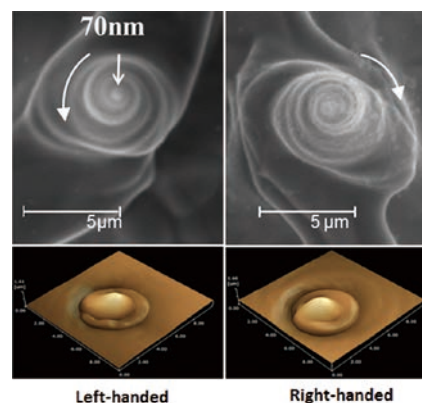
Especially, the project for the application of iodine is a most important, because the significant amount of iodine has been produced in this Chiba prefecture. Due to the impact of this iodine resource, a research center of “Chiba Iodine Resource Innovation Center (CIRIC)” was constructed in SMARC.

We welcome anyone interested in research at the forefront of iodine-related soft molecular activation chemistry to come and work in this diverse and challenging field at Chiba.

05-9

Molecular Chirality Research Center (MCRC)

<https://www.tp.chiba-u.jp/MCRC/index.html>
E-mail mah3034@office.chiba-u.jp



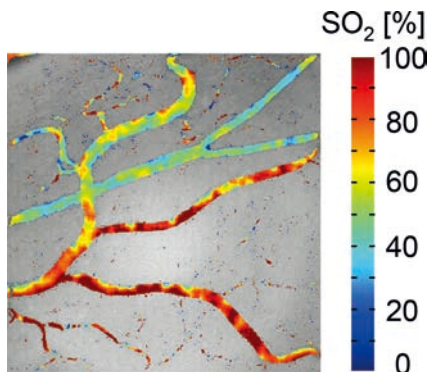
Molecular Chirality Research Center (MCRC) aims to develop innovative chiral materials, devices, and technologies through interdisciplinary research collaboration among Chiba University and domestic/overseas research institutions. Chirality/helicity is universal in natural science, and it plays an important role in, for instance, chiral materials exhibit unique properties, such as circular dichroism for optical polarization.

Helical light fields, i.e., optical vortices and circularly polarized beams, carry spin and orbital angular, and they enable us to twist materials to structure chiral materials on a nano/micron-scale. Such chiral structured materials will have to pioneer new advanced technologies, including chiral optical devices with circular dichroism, chiral chemical reactors, chiral selective imagers, topological structured materials, etc.. Helical light beams should also bring a breakthrough to asymmetric synthesis, and further give the high impact to biology so as to reveal the origin of homochirality. MCRC promotes strategic research projects by employing helical light beams, and it also leads a Strategic Priority Research Promotion Program of Chiba University, ‘Chiral materials science’.

05-10

Center for Frontier Medical Engineering

<http://www.cfme.chiba-u.jp/en/>
E-mail mae3114@office.chiba-u.jp



Visualization of oxygen saturation of microcirculation

The Center for Frontier Medical Engineering (CFME) was established in 2003 to promote research projects that would contribute to innovation of medical practice through technologies of modern medical engineering. Adjacent to our center, Science Park Center offers excellent experiment environment where CT, MRI and operating theater are ready. Furthermore, Med-Tech Link Center was established in 2018 in Chiba University Hospital to promote clinical studies. Utilizing this rich and advantageous environment, our staff members, together with students in Department of Medical Engineering have been pursuing cutting-edge medical engineering technologies. CFME has been promoting collaboration projects with various departments, institutions and industries at home and abroad. As a result, we have accomplished technical transfers and have succeeded in putting several medical systems or devices into practical use such as image processing modalities equipped to endoscope or ultrasonography, microwave antenna for thermotherapy. Our mission lies in contributing to medicine by advancing our research projects beneficial to both patients and clinicians.

05-11

Center for Environment, Health and Field Sciences

<http://www.h.chiba-u.jp/center/english/top.htm>
E-mail zao8006@office.chiba-u.jp



The Center was founded in April 2003 with 15 academic members and over 50 associate academic members belonging to various scientific fields within Chiba University.

The Center conducts interdisciplinary education and research on food, environment and health which is related to plants.

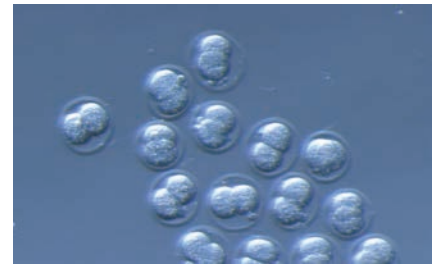
There are two environmental garden farms in Kashiwa and Numata, and plant factory base which offers technical education, research into plant functionality and comfort, and research into environmentally friendly horticultural production technology. The Center also has a various course certification program for collaborative projects, such as agriculture and welfare related businesses working together to support people with disabilities, the elderly and the vulnerable.

The Center is engaged in activities that pursue the sustainability of the local community, and which are carried out in cooperation with the Kashiwanoha Clinic, Acupuncture Center, many departments inside and outside the university, companies, and overseas agreement institutions.

05-12

Biomedical Research Center

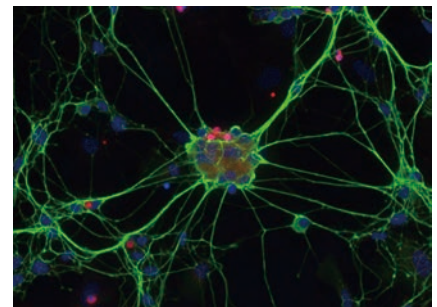
<https://www.m.chiba-u.ac.jp/dept/biomed/>
E-mail inohana-koho@chiba-u.jp



The Biomedical Research Center was established in 2001 with a view to educating researchers and students of the University focusing on the practical use of cutting-edge technology and molecular genetics.



The Center will support researchers by offering the Center as a common facility of gene technology including transgenic and gene-targeting.



05-13

Center for Forensic Mental Health

<https://www.m.chiba-u.ac.jp/class/shakai/en/index.html>
E-mail inohana-koho@chiba-u.jp



The Center for Forensic Mental Health (CFMH) was established in April 2005. One of the aims of CFMH is a dedication to developing educational and training systems of forensic mental health for medical and postgraduate students, psychiatrists, co-medical staffs, lawyers, and others in Japan.

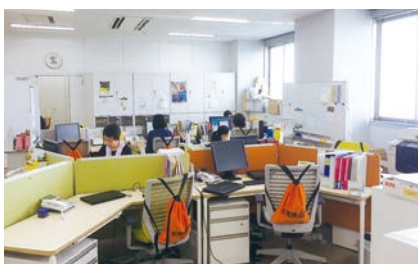


Another aim is to develop research on social systems, diagnosis and treatment methods, and neuroscientific issues of offenders with mental disorders and juvenile delinquency. In Education, the center conducts Social Mental Health, a new program in the Graduate School of Medicine started in 2009.

05-14

Center for Preventive Medical Sciences

<https://cpms.chiba-u.jp/index.html>
E-mail inohana-koho@chiba-u.jp



The Center was established to do research and education regarding “Primordial Preventive Medicine”, in which the surrounding environment is improved so that possible adverse health effects caused by the environment will be prevented. The activities include for example, the JECS (Japan Environment and Children’s Study) in which 100,000 pairs of mothers and children will be followed until the children become 13 years old to find out the relationship between the environmental contaminants and children’s health, the Chemiless Town Project, in which healthier housing and building is researched, the WACo (Consortium of Well Active Community) in which the Center and industries collaborate to design a town of Primordial Preventive Medicine, and the JAGES (Japan Gerontological Evaluation Study) in which they study healthy aging. The Center has a several donated laboratories to aim healthier future generations.

05-15

Future Medicine Research Center (FMRC)

Email inohana-koho@chiba-u.jp

The Future Medicine Research Center was established in January 2012. Our aim is to create the new research field, “therapeutics,” which is defined as a study on clarifying a theoretical background of medical treatments and developing a new approach to establish more effective and less painful therapy by creating a platform of systematic research and medical practice.

Based on interdisciplinary collaborative researches and social needs from the general public, this new research field circulates knowledge between the basic science and clinical practice. We aim to foster young researchers and clinicians who are expected to play a strong leadership role in the future in the field of clinical researches such as translational research, clinical study and global clinical trials.

FMRC also works closely with the top domestic and international institutions of industry, government and academia.

05-16

Research Center for Regenerative Therapeutics

<https://www.m.chiba-u.ac.jp/class/saiseichiryo/index.html>
E-mail inohana-koho@chiba-u.jp



The Center for Regenerative Therapeutics was established in April 2015. Our aim is to innovate new therapeutics on the basis of stem cell biology and regenerative medicine. Stem cells, which have the remarkable capacity to both self-renew and give rise to many types of more specialized cells in the body, have great therapeutic potential in regenerative medicine. They are also an invaluable research tool for probing the disease mechanisms that underpin cancer, aging and a host of other health problems. We focus on the research on pluripotent as well as tissue-specific stem cells from the viewpoint of basic medicine and regenerative medicine. We also promote research on disease-specific iPS cells as a tool for unraveling the pathogenesis of various diseases, screening of therapeutic compounds and developing innovative therapies. We also nurture young researchers and technical specialists who will play an active role in the next generation.

05-17

Research Center for Child Mental Development

<https://www.m.chiba-u.ac.jp/class/rccmd/index.html>
E-mail inohana-koho@chiba-u.jp



The Research Center for Child Mental Development is established to promote research for mind and brain at a wide range of developmental stages from children to adults in the interdisciplinary field of neuroscience, psychiatry, psychology, computer science, social science, education and so on. It also provides education and training for evidence-based cognitive behavioral therapy to manage and treat mental health problems including anxiety, depression, eating disorders, obsessive-compulsive disorders, stress-related disorders, and autism spectrum disorders.



Osaka University, Kanazawa University, Hamamatsu University School of Medicine, Chiba University and University of Fukui have united and established "United Graduate School of Child Development," where child specialists with diverse backgrounds and work experience learn and conduct research together. Our aim is 1) to cultivate researchers specialized in "Child's Mind and Developmental Brain Science," which is a novel research field, 2) to cultivate specialists with the interdisciplinary background in order to meet the social requirement, and 3) to create tight networks between relevant specialists.

05-18

Plant Molecular Science Center

<http://www.p.chiba-u.jp/phytochemical/index-e.html>
E-mail inohana-koho@chiba-u.jp

Plant Molecular Science Center, Chiba University, will combine the strengths of Chiba University's plant molecular science research to form an outstanding research base through cross-disciplinary and fusion of campuses and departments, and further strengthen this field. Aiming to be a leading center for plant molecular science in Japan and abroad. In particular, this center focuses on plant molecules (especially genes and chemical components) in plants that support the earth and humankind, and promotes research for the molecular elucidation of plant functions defined by the genome and environment and its application.

Plant Molecular Science Center will act with emphasizing on the following global perspective. In 2015, the United Nations set 'Sustainable Development Goals: SDGs' for 'Transforming our world: the 2030 Agenda for Sustainable Development', a collection of 17 global goals. A majority of governmental organizations and private sectors are trying to tackle these 17 goals by the different approaches for the future of our world. We believe plant science, in general, can contribute several of these goals, i.e., Goal 2: Zero hunger, Goal 3: Good health and well-being for people, Goal 7: Affordable and clean energy, Goal 13: Climate action, and Goal 15: Life on land. Plant Molecular Science Center will contribute to these goals by aligning with other public organizations and private sectors through innovation in plant science and technology.

05-19

Academic Link Center

<http://alc.chiba-u.jp/index.html>
E-mail alc-info@chiba-u.jp

“Academic Link” is a new educational concept at Chiba University created by University Library, the Institute of Media and Information Technology (Current: the Institute of Management and Information Technologies), and the Center for General Education (Current: Center for the Promotion of Higher Education) in order to nurture students and graduate students with abilities to select, process, and utilize knowledge for their long-life learning. Academic Link Center was established on April 1, 2011, as an organization to conduct research and development being necessitated to realize and to promote this concept. This center consists of “Digital Scholarship Department”, “Advanced Learning Support Department”, “Research Commons Department”, “Interlinking of IR, FD and SD Department”, and “Professional Staff Development for Educational and Learning Support Department” (This Department was selected as Joint Usage / Education Center, by the Ministry of Education, Sports, Culture, Science and Technology). We strive to realize the active learning of students by creating and providing digital content suitable for their learning, and proceed with the Academic Link Professional Staff development program for educational and learning support (ALPS program).

05-20

Venture Business Laboratory

HP <http://www.vbl.chiba-u.jp/en/index.html>
E-mail sagaragaku@chiba-u.jp



Venture Business Laboratory (VBL) was established in 1999. VBL plays a key role in promoting unique and creative researches on science and technology that can become seeds for new industries or venture businesses.

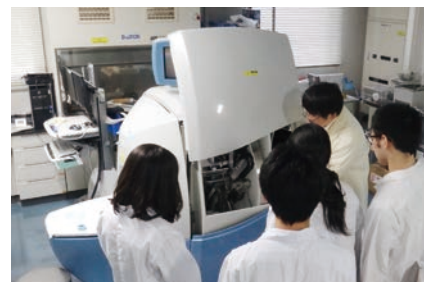


At present, 9 research projects are implemented in various fields. In addition, VBL provides lectures on venture business for students to cultivate creativity and entrepreneurial spirit. VBL's activities are published (in Japanese) in VBL Annual Reports.

05-21

Radioisotope Research Center

E-mail isotope@office.chiba-u.jp



The Radioisotope Research Center was established in order to support researchers and students in advanced research by offering the opportunity for sharing the Center's laboratories and facilities.



The Center plays an important role as a central organization for the safety inspection of the radioisotope facilities and for safety training and education in Chiba University.

University Hospital

<https://www.ho.chiba-u.ac.jp/en/index.html>

E-mail xaf6005@office.chiba-u.jp

We have three main missions as a university hospital.

Clinical Medicine

to cure our patients



Our doctors, nurses and other staff are integral to the care we provide in a wide range of fields. Chiba University Hospital has state-of-the-art equipment that allows us to treat various challenging diseases. Our facilities ensure patients stay comfortable while they receive care. This combination of superb medical personnel, equipment and facilities is a hallmark of our hospital.

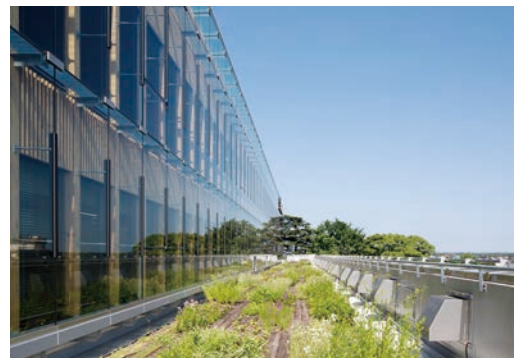
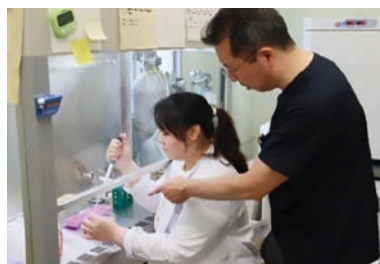
Education

to cultivate professionals leading to the future



Research

to find treatments for hard-to-cure diseases



The Center for Treatment and Care that will open in January 2021 exemplifies our commitment to providing top-class medical care. With six floors aboveground and three below, this new building will have hybrid operating rooms and the latest radiation therapy units. The new building will bolster the services we provide so Chiba University Hospital can help more patients who need individualized care.





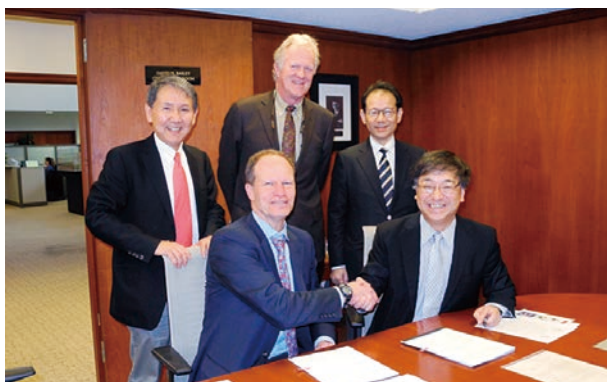
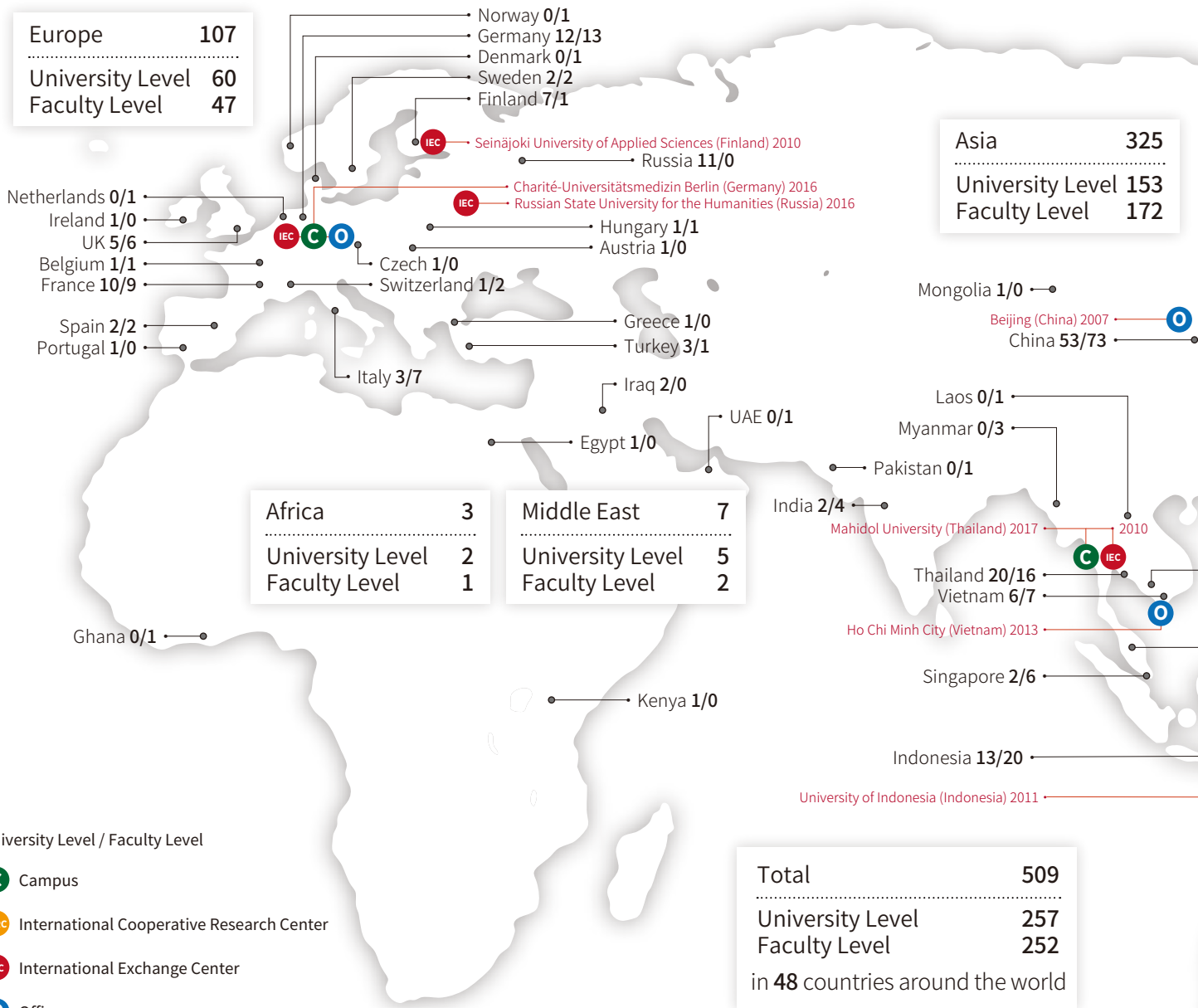
06

Internationalization

06-1 Partner Universities

06-2 Development of Strategic Overseas Centers / International Support Desk (ISD)

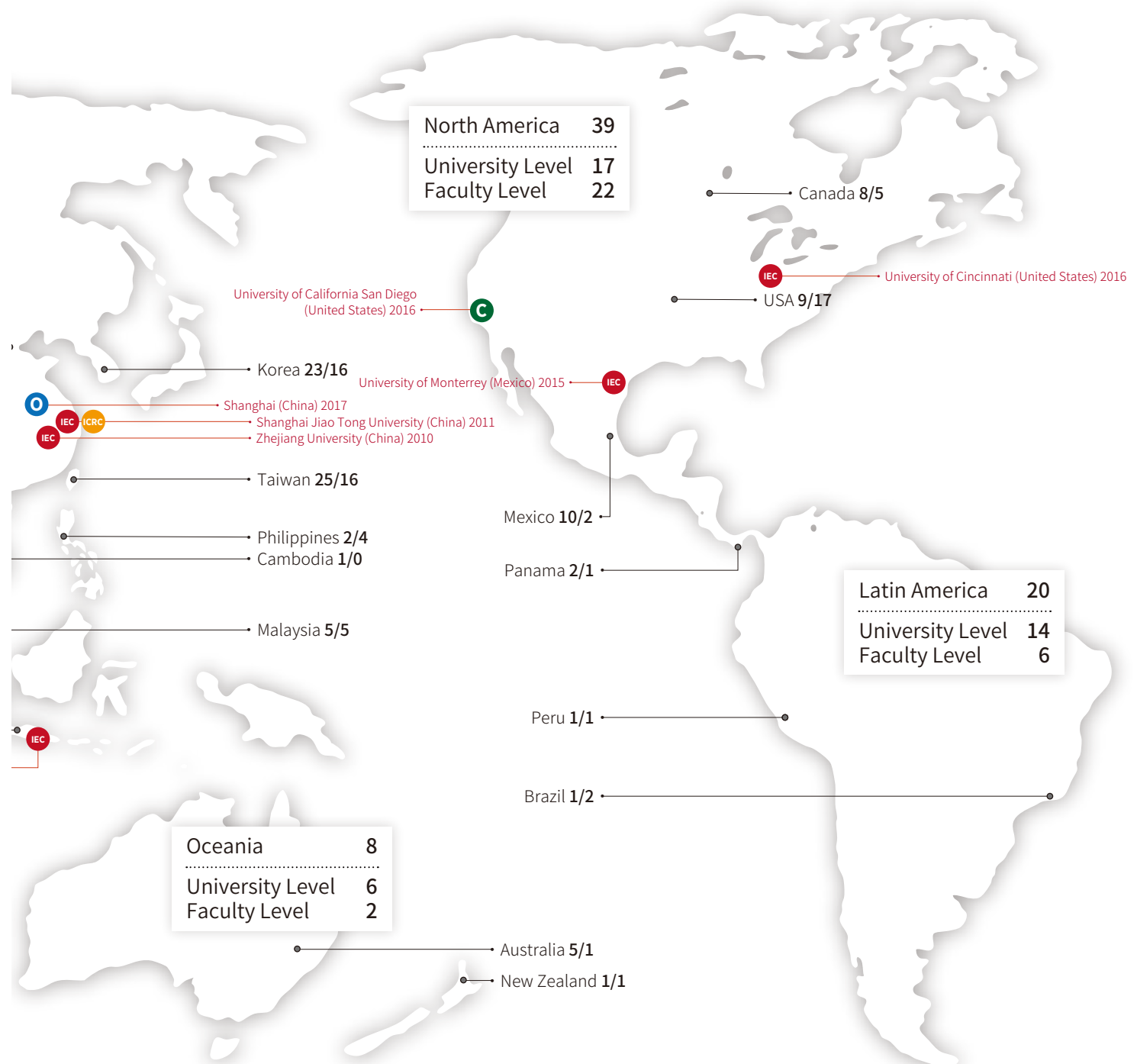
Partner Universities



University of California: Signing ceremony



Charité-Universitätsmedizin Berlin



IEC in Mahidol University



Russian State University for the Humanities

Development of Strategic Overseas Centers

Seeking to be a global campus, Chiba University is promoting the development of strategic overseas centers, with each classified into one of four categories based on its functions. These four categories are overseas campuses, the International Cooperative Research Center (ICRC), International Exchange Center (IEC), and overseas offices. At present, there are a total of 17 centers (with some overlap) comprised of 3 overseas campus centers, 1 ICRC, 9 IEC, and 4 overseas offices. Additionally, we established an “Institute for Global Campus Planning” to provide integrated management of those centers as an administrative body under the direct supervision of the President. By doing so, we established a management and application system under the President’s strong leadership based on Chiba University’s global strategy. In particular, we will develop the Chiba University Bang-

kok Campus in Bangkok, Thailand into an “Asia + ASEAN Innovation Creation Center.” With a staff of full-time instructors and professionals, the Bangkok Campus will take on the role of driving the globalization of education and research throughout the university. It will achieve this by building a powerful network with universities in Thailand and ASEAN and executing diverse educational programs that fuse the humanities and sciences, and by developing social implementation-type research that makes use of the university’s strengths. Like the San Diego Campus’s “International Center of Excellence in the Mucosal Immunology and Innovative Allergy Therapeutics” within the University of California San Diego and the Berlin Campus’s “Global Medicine Creation Center” within Charité Universitätsmedizin Berlin, both of which were established by the end of 2016, those centers are promoting

further advancement of Chiba University’s globalization in coordination with the Shanghai Jiao Tong University and Chiba University International Cooperative Research Center (ICRC) as a base for education and research in a specialized field. Through these initiatives, we will strongly promote the aims stated in our Vision; namely, to “create research and education centers by establishing international networks.” In addition, we plan to and “create innovation that will pave the way for the next generation: promote and strengthen cooperative research with industry aimed at creating innovation, and nurture the development of human resources who will create innovation and reform organizations,” and then to link the results to our effort to “enhance Chiba University branding: increase international trust through outstanding education and research.

International Support Desk (ISD)

Nishi-Chiba campus (main office)

General Student Service Center 2F
Tel : +81-43-290-2195
Fax : +81-43-290-2198

Inohana campus branch

Medical and Pharmaceutical Science Building II 1F

Matsudo campus branch

F Building 1F

<http://www.chiba-u.ac.jp/international/isd/english/index.html>
Email : isd@office.chiba-u.jp

■ International Support Desk (ISD)

Functions as primary contact for international students and researchers who seek help in adapting to life in Japan and at Chiba University. ISD provides the latest information and specific advice on:

Immigration formalities

- Visa application/extension
- Changing residential status
- Bringing your family members to Japan
- Resident card (Zairyu card)

Resident formalities

- National Health Insurance
- Moving-in/out notifications

Campus & daily life

- Opening a bank account
- Finding a clinic
- Nurseries / Schools
- Leisure venues
- Use of a bicycle on campus
- Food/ Restaurants

ISD also provides information about services handled by the Center for International Education (CIE) and International Student Division. These include:

- Japanese language courses
- Intercultural activities
- Exchanges with local communities
- Counseling for international students
- Language support by Japanese students/tutors
- Housing
- Scholarships



Center for International Education



International Support Desk (ISD)



Access

- 07-1 Nishi-Chiba Campus
- 07-2 Inohana Campus
- 07-3 Matsudo Campus
- 07-4 Kashiwanoha Campus
- 07-5 Transportation Map

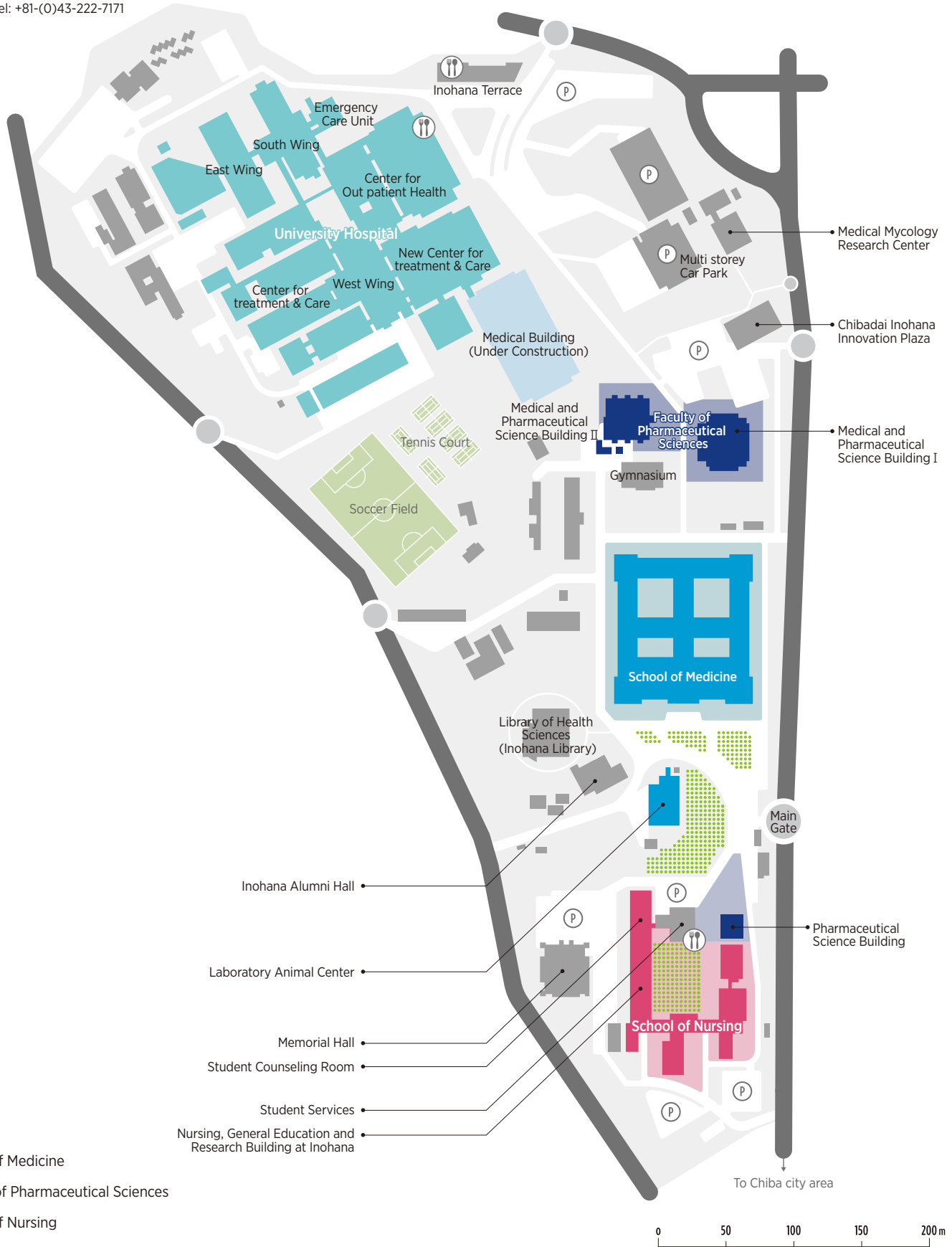
Nishi-Chiba Campus

1-33, Yayoicho, Inage-ku, Chiba-shi, Chiba, 263-8522 Japan
 Tel: +81-(0)43-251-1111



Inohana Campus

School of Medicine Chiba University, 1-8-1 Inohana, Chuo-ku, Chiba-shi 260-8670, Japan
Faculty of Pharmaceutical Sciences Chiba University, 1-8-1 Inohana, Chuo-ku, Chiba-shi 260-8675, Japan
School of Nursing Chiba University, 1-8-1 Inohana, Chuo-ku, Chiba-shi 260-8672, Japan
MMRC Chiba University, 1-8-1 Inohana, Chuo-ku, Chiba-shi 260-8673, Japan
University Hospital Chiba University, 1-8-1 Inohana, Chuo-ku, Chiba-shi 260-8677, Japan
 Tel: +81-(0)43-222-7171



Matsudo Campus

Chiba University, Matsudo 648, Matsudo-shi 271-8510, Japan
Tel: +81-(0)47-308-8706



● Faculty of Horticulture



Kashiwanoha Campus

Chiba University, 6-2-1 Kashiwanoha, Kashiwa-shi, 277-0882, Japan
Tel: +81-(0)4-7137-8000



Transportation Map

Directions

NISHI-CHIBA CAMPUS

1-minute walk from North exit of JR Nishi Chiba Station (Sobu Local Line) or 10-minute walk from Midoridai Station (Keisei Line)

MATSUDO CAMPUS

15-minute walk from East exit of Matsudo Station (JR Joban Line or Shin-Keisei Line)

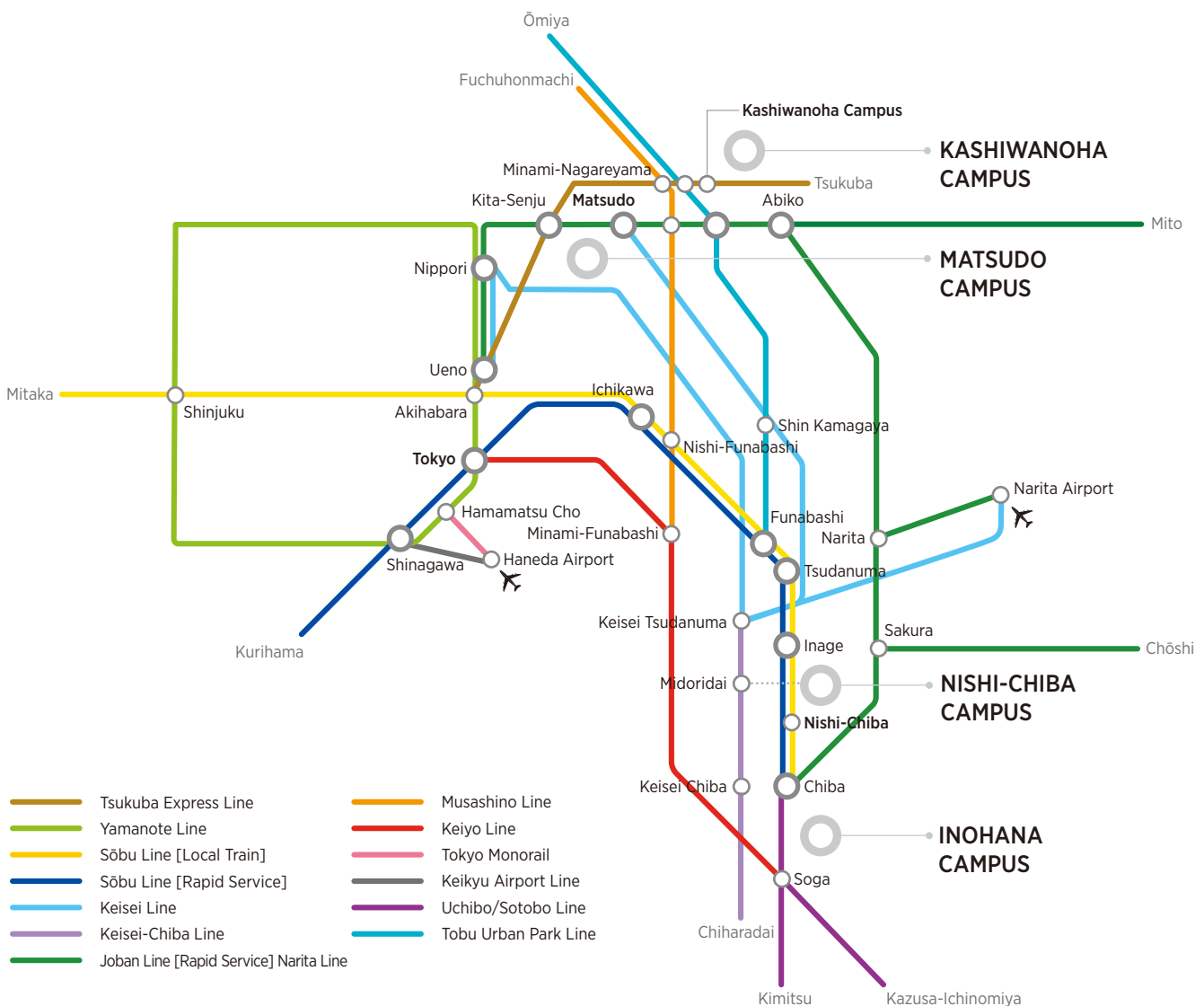
KASHIWANOHA CAMPUS

5-minute walk from West exit of Kashiwanoha Campus Station (Tsukuba Express)

INOHANA CAMPUS

Take Keisei Bus bound for Chibadaigaku Byouin (Chiba University Hospital) or Minami-yahagi from bus stop #7 at East exit of JR Chiba Station / Keisei Chiba Station (Keisei Line). Takes 15-30 minutes depending on the traffic.

- Medicine and Nursing: Exit at “Chibadai Igakubu Iriguchi” (Chiba University School of Medicine-entrance) stop
- Pharmaceutical Sciences: Exit at “Chibadai Yakugaku-bu Mae” (Chiba University Faculty of Pharmaceutical Sciences-entrance) stop
- MMRC: Exit at “Chuo Hakubutsukan” (National History Museum and Institute) stop
- University Hospital: Exit at “Chibadaigaku Byouin” (Chiba University Hospital)



Campus Locations and General Contacts

International Affairs Division (General Student Service Center)

Tel : +81-43-290-2043

Fax : +81-43-290-2041

E-mail : kokusai@office.chiba-u.jp

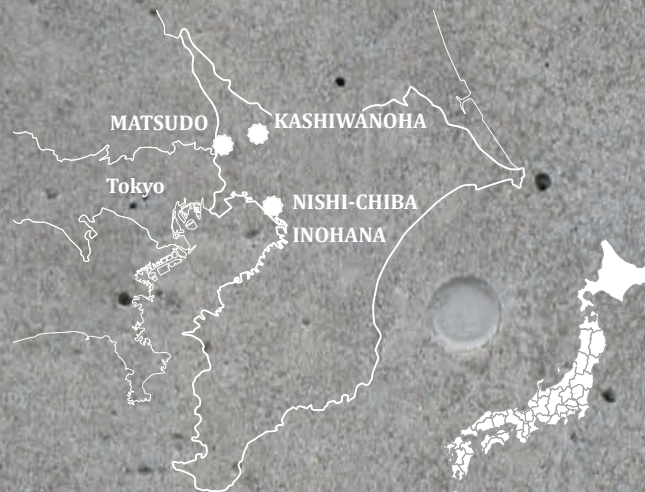
International Student Division (General Student Service Center)

For international students and applicants from overseas

Tel : +81-43-290-2193, 2197

Fax : +81-43-290-2198

E-mail : dge2195@office.chiba-u.jp



NISHI-CHIBA CAMPUS

1-33, Yayoi-cho, Inage-ku, Chiba-shi, Chiba,
263-8522 Japan

- College of Liberal Arts and Sciences
- Faculty of Letters
- Faculty of Education
- Faculty of Law, Politics and Economics
- Faculty of Science
- Faculty of Engineering
- Graduate School of Humanities and Studies on Public Affairs
- Law School
- Graduate School of Education
- Graduate School of Science and Engineering
- Graduate Degree Program of Global and Transdisciplinary Studies
- University Library -Central Library
- Center for Environmental Remote Sensing
- Center for Analytical Instrumentation
- Institute of Management and Information Technologies
- Center for Frontier Science
- Academic Link Center
- Venture Business Laboratory
- Radioisotope Research Center

INOHANA CAMPUS

1-8-1, Inohana, Chuo-ku, Chiba-shi, Chiba, Japan

260-8670 (for Medicine, Biomedical)

260-8671 (for University Library)

260-8672 (for Nursing)

260-8673 (for MMRC)

260-8675 (for Pharmaceutical Sciences)

260-8677 (for University Hospital)

Tel +81-43-222-7171

- School of Medicine
- Faculty of Pharmaceutical Sciences
- School of Nursing
- Graduate School of Medicine
- Graduate School of Medical and Pharmaceutical Sciences
- Graduate School of Nursing
- Medical Mycology Research Center
- Biomedical Research Center
- Center for Forensic Mental Health
- Center for Preventive Medical Sciences
- Future Medicine Research Center
- Center for Regenerative Therapeutics
- Research Center for Child Mental Development
- University Library -Library of Health Sciences
- University Hospital

MATSUDO CAMPUS

648, Matsudo, Matsudo-shi, Chiba,

271-8510 Japan

Tel +81-47-308-8706 Fax +81-47-308-8720

- Faculty of Horticulture
- Graduate School of Horticulture
- University Library -Library of Horticultural Sciences

KASHIWANOHA CAMPUS

6-2-1, Kashiwanoha, Kashiwa-shi, Chiba,

277-0882 Japan

Tel +81-4-7137-8000 Fax +81-47-137-8008

- Center for Environment, Health and Field Sciences

AD ALTIORA SEMPER
UNIVERSITAS CHIBA

2020
2021

CHIBA UNIVERSITY

1-33, Yayoi-cho, Inage-ku, Chiba-shi, Chiba, 263-8522 Japan

www.chiba-u.ac.jp/e

Dec. 2020

Copyright (C) 2020-2021 Chiba University. All Rights Reserved.



千葉大学南門

2020

2021

DATA SUMMARY



CHIBA UNIVERSITY

Contents

01 Internationalization	
01-1 Partner Universities and Institutions	01
01-2 Double Degree Program	09
02 Overview	
02-1 Number of Students / Number of Staff	10
02-2 International Student Enrolment	11
02-3 International Researcher Exchange	
University Fees	12
02-4 University Library	13
02-5 Schools and Center Affiliated to the Faculty of Education	14
02-6 Administrative Staff	15
Campus Locations and General Contacts	16

Department Name					
All	Inter-institute	G.S.E	Graduate School of Science and Engineering	CEReS	Center for Environmental Remote Sensing
Litt	Faculty of Letters	G.S.H	Graduate School of Horticulture	MCRC	Molecular Chirality Research Center
L.P.E	Faculty of Law, Politics and Economics	G.M.P	Graduate School of Medical and Pharmaceutical Sciences	CFS	Center for Frontier Science
Edu	Faculty of Education	G.N	Graduate School of Nursing	MMRC	Medical Mycology Research Center
Sc	Faculty of Science	G.H	Graduate School of Humanities	CEHFS	Center for Environment, Health and Field Sciences
Eng	Faculty of Engineering	G.S.S	Graduate School of Social Science	CFME	Center for Frontier Medical Engineering
Hort	Faculty of Horticulture	G.S	Graduate School of Science	CFMH	Center for Forensic Mental Health
Med	School of Medicine	G.E	Graduate School of Engineering	CPMS	Center for Preventive Medical Sciences
Pharm	Faculty of Pharmaceutical Sciences	G.M	Graduate School of Medicine	A.LC	Academic Link Center
Nur	School of Nursing	G.P	Graduate School of Pharmaceutical Sciences	Hosp.	University Hospital
LL&Econ	Faculty of Law and Economics	3Pharm	GP + GMP + Pharm	IEEI	Institute for Excellence in Educational Innovation
G.S.H.S.PA	Graduate School of Humanities and Studies on Public Affairs	G.H.S	Graduate School of Humanities and Social Sciences	CSTC	Center for Sustainable Tourist Creation
G.ED	Graduate School of Education	G.A	Graduate School of Advances Integration Science	SJTU-CUICRC	Shanghai Jiao Tong University and Chiba University International Cooperative Research Center
		Sc&Tech	Graduate School of Science and Technology	CLE	Center for Language Education

Partner Universities and Institutions

Africa

● Student exchange agreement

Country	University/Institute	Starting Date	Department	
Egypt	National Authority for Remote Sensing and Space Sciences (NARSS)	Dec 2017	All	
Ghana	University of Ghana	College of Agriculture and Consumer Sciences, Forest and Horticultural Crops Research Centre	Jun 2014	CEHFS
Kenya	● Jomo Kenyatta University of Agriculture and Technology	May 2019	All	

Asia

Country	University/Institute	Starting Date	Department	
Cambodia	● Royal University of Phnom Penh	Dec 2009	All	
	● Anhui Medical University	Jun 2010	All	
China	● Beihang University	School of Mechanical Engineering and Automation	Mar 2019	Eng, G.S.E, G.E
	Beijing Detao Masters Academy		Jun 2011	Eng, G.E
	● Beijing Forestry University		Sept 2016	All
	● Beijing Forestry University	School of Landscape Architecture	Sept 2001	Hort, G.S.H
	● Beijing Institute of Graphic Communication		Sept 2011	All
	● Beijing Institute of Technology		Aug 2018	All
	● Beijing Institute of Technology	School of Design and Arts	Jan 2011	G.E
	Beijing Jiaotong University	School of Electronic and Information Engineering	Aug 2019	Eng, G.S.E, G.E
	● Beijing University of Posts and Telecommunications		Jun 2016	All
	● Central South University		Sept 2016	All
	Central South University	Mental Health Institute	Nov 2010	CFMH
	● Changchun University of Science and Technology		Apr 2017	All
	● China Academy of Art		Mar 2013	All
	● China Agricultural University		Oct 2001	All
	China Medical University		Jun 2013	All
	China Pharmaceutical University	School of Pharmacy	Feb 1996	3Pharm
	● China University of Geosciences, Wuhan	School of Automation	Mar 2018	Eng, G.S.E, G.E
	● China West Normal University		Sept 2018	All
	● Chinese Academy of Agricultural Sciences	Institute of Agricultural Resources and Regional Planning	May 2016	Hort, G.S.H
	Chinese Academy of Sciences	Hefei Institute of Physical Sciences	Apr 1997	Sc&Tech, CEReS
	● Chinese Academy of Sciences	Institute of Geographical Sciences and Natural Resources Research	Aug 2005	Hort, G.S.H
	Chinese Academy of Sciences	Tian Shan Glaciological Station, Lanzhou Cold and Arid Regions Environment and Engineering Research institute	Jul 2007	G.S
	Chinese Academy of Sciences	Institute of Subtropical Agriculture	Oct 2015	G.S.H
	Chinese Academy of Social Sciences	Institute of Ethnic Literature	Mar 2013	G.S.H.S.P.A
	● Communication University of Zhejiang		Oct 2019	All
	Dalian Medical University		Nov 2015	All
	● Dalian Medical University	School of Nursing	May 2016	Nur, G.N
	Dalian Medical University	The first Affiliated hospital	Jul 2019	Hosp.
	Dalian Medical University	The first Affiliated hospital	Nov 2019	Nur, G.N
	Dalian Medical University	The second hospital	Jul 2019	Hosp.
	● Dalian University of Technology		Dec 2013	All
	● Donghua University		May 2018	All
	East China Normal University		Oct 2018	All
	● East China University of Science and Technology		Dec 2013	All
	● Fudan University		Nov 2017	All
	● Fudan University	School of Nursing	Nov 2017	Nur, G.N
	● Guangzhou Academy of Fine Arts		Dec 2016	All
	Guangzhou Academy of Fine Arts		Nov 2019	G.S.E
	Guizhou Medical University		Jan 2009	MMRC
	Guizhou Minzu University	College of Literature	Dec 2018	G.H
	● Guizhou University		Jun 2006	All
	Hangzhou Normal University	School of Science	Apr 2011	Sc, G.S
	● Harbin Institute of Technology		Sept 2018	All
	Hebei Medical University		Mar 2017	All
	Hong Kong Baptist University	School of Chinese Medicine	Nov 2013	G.P
	Hong Kong University of Science and Technology	Division of BioMedical Engineering	Jun 2012	G.E, SJTU-CUICRC
	Huaqiao University		Apr 2018	All
Huaqiao University	Institute of Industry Design and Research	Nov 2017	Eng, G.S.E, G.E	
● Hubei University		Dec 2019	All	
● Hunan Agricultural University	School of Horticulture and Landscape	Aug 2019	Hort, G.S.H	
● Hunan Normal University		Sept 2009	Edu, G.ED	
● Hunan Normal University		Mar 2018	All	
● Hunan University		May 1985	All	
Inner Mongolia University	School of Mongolian Studies	Jun 2014	G.S.H.S.P.A	
● Institute of Environment and Sustainable Development in Agriculture		Feb 2020	All	
● Jiangnan University		Dec 2018	All	
● Jiangnan University	School of Design	Feb 2008	Eng, G.S.E, G.E	

Country	University/Institute	Starting Date	Department	
China	● Jiangsu University	Mar 2018	All	
	● Jiangsu University	Oct 2018	G.S.H, CEHFS	
	Jiangsu University	Apr 2017	CEHFS	
	Jiangxi University of Finance and Economics	Dec 2019	All	
	Jilin University	Jun 2019	Sc, G.S.E, G.S	
	Jilin University	Feb 2008	MMRC	
	● Jinan University	Jan 2020	G.M	
	● Lanzhou University	Jul 2019	All	
	● Ludong University	May 2014	All	
	● Minzu University of China	Feb 2009	All	
	● Nanjing Agricultural University	Sept 2002	All	
	Nanjing Agricultural University	Jul 2015	G.S.H	
	● Nanjing Forestry University	Jun 2018	All	
	● Nanjing University of Aeronautics and Astronautics	College of Mechanical and Electrical Engineering	Nov 2018	Eng, G.S.E, G.E
	● Nanjing University of Information Science & Technology		Apr 2011	All
	● Nanjing University of the Arts	School of Industrial Design	Jan 2017	G.E
	Northeast Normal University		Nov 2014	All
	Northwest A&F University	College of Horticulture	Jun 2013	CEHFS
	● Northwestern Polytechnical University		Mar 2017	All
	● Northwestern Polytechnical University	School of Mechanical Engineering	Oct 2019	Eng, G.S.E, G.E
	Peking University	Earthquake Monitoring and Prediction Technology Research Center (EMPTRC), Shenzhen Graduate School	Sept 2019	Sc, G.S
	Peking University	School of Nursing	Dec 2007	Nur
	Peking University	School of Earth and Space Sciences	Mar 2010	Sc, G.S
	Peking University	National Institute on Drug Dependence	Nov 2010	CFMH
	● Qingdao Technological University	School of Architecture	Jun 2015	Hort, G.S.H
	● Shandong Agricultural University		May 2008	G.S.H
	Shandong University	School of Physics	Oct 2014	Eng, G.S.E, G.E
	Shanghai International Studies University	School of Japanese Studies	Dec 2019	G.H
	● Shanghai Jiao Tong University		Oct 2002	All
	Shanghai Jiao Tong University	School of Media and Design	Mar 2009	G.E
	Shanghai Jiao Tong University	School of Naval Architecture, Ocean & Civil Engineering	Jan 2010	G.E
	Shanghai Jiao Tong University	Engineering Research Center of Digital Medicine, Ministry of Education of PRC	Dec 2010	CFMH
	Shanghai Jiao Tong University	School of Agriculture and Biology	Jul 2011	G.S.H
	● Shanghai University		May 2018	All
	● Shenyang Agricultural University	College of Agronomy, College of Water Conservancy, College of Food Science, College of Agricultural Engineering, College of Forestry and College of Economics and Trade	Mar 2000	Hort, G.S.H
	Shenyang Pharmaceutical University	School of Pharmacy	Feb 2004	3Pharm
	● Sichuan University	College of Environment and Architecture	Sept 2018	Hort, G.S.H
	Soochow University	Institute of Functional Nano & Soft Materials	Feb 2011	G.A
	● South China Agricultural University	College of Agriculture	Dec 2016	Hort, G.S.H
	● South China University of Technology		Dec 2019	All
	South University of Science and Technology	School of Earth and Space Sciences	Jul 2018	Sc, G.S.E, G.S
	● Tianjin University of Traditional Chinese Medicine		Sept 2013	All
	● Tongji University	College of Design and Innovation/Shanghai International College of Design and Innovation	Feb 2008	Eng, G.S.E, G.E
	● Tsinghua University	School of Architecture	Aug 2007	G.S.H
	Tsinghua University	Yangtze Delta Region Institute	Sept 2007	G.S.H
	● Tsinghua University		Dec 2007	All
	University of Electronic Science and Technology of China	School of Electronic Engineering	Mar 2015	G.S.E
	● University of Electronic Science and Technology of China		Dec 2015	All
	University of Hong Kong	School of Nursing	Mar 2018	G.N
	● University of Jinan		Jun 2017	All
	● University of Science and Technology Beijing	School of Automation and Electrical Engineering	Dec 2013	Eng, G.S.E, G.E
	● Wuhan University	School of Medicine	Jul 2015	G.M.P, G.P
	● Xi'an Jiaotong University		Jul 2017	All
	● Xi'an University of Technology	Graduate School and Faculty of Mechanical and Precision Instrument Engineering	Jul 2014	Eng, G.S.E, G.E
	● Xi'an University of Technology	Faculty of Printing, Packaging Engineering and Digital Media Technology	Feb 2016	G.A
	Xiangtan University		May 2017	All
	● Xiangtan University	College of Information Engineering	Feb 2017	G.A
	● Xihua University	School of Materials Science and Engineering	Oct 2017	Eng, G.S.E, G.E
	Xinjiang Medical University	Department of Dermatology, First Affiliated Hospital, Research Center for Medical Mycology	Sept 2010	MMRC
	● Xinjiang Normal University		May 2010	All
	● Yantai University		Jan 2016	All
	● Zhejiang Gongshang University		May 2012	All
	Zhejiang Gongshang University	School of Oriental Language and Culture	Dec 2017	G.S.H.S.P.A
	● Zhejiang University		Jun 2010	All
	Zhejiang University	College of Computer Science and Technology	Feb 2018	G.S.E
	● Zhejiang University of Technology		Jun 2010	All
	● Zhengzhou University		Jan 2020	All
	● Zhengzhou University	School of Information Engineering Digital Medical Image Technique Research Center	Apr 2016	G.E, G.A, CFME
	India	Jawaharlal Nehru Agricultural University	Nov 2017	Edu
		● National Institute of Design	Apr 2017	All

Country	University/Institute	Starting Date	Department
India	● PDPM Indian Institute of Information Technology	Design and Manufacturing Jabalpur	Jun 2012 All
	● SRM University	Faculty of Sciences and Technology	Jun 2016 Pharm
	● Tamil Nadu Agricultural University	International cell, Directorate of Planning and Monitoring	Sept 2010 Hort, G.S.H
	● University of Agricultural Sciences	College of Agriculture-Bangalore	Jan 2013 Hort, G.S.H
	● Bandung Institute of Technology		Mar 2006 All
	Bandung Institute of Technology	Faculty of Design and Fine Art Faculty of Earth Sciences and Technology Faculty of Life Sciences and Technology	Oct 2012 G.E, G.A, CEReS
	● Budi Luhur University	Center for Environmental Studies	Dec 2015 CEReS
	● Diponegoro University		Aug 2012 All
	● Gadjah Mada University		Oct 1990 All
	● Gadjah Mada University	Faculty of Mathematics and Natural Sciences	Sept 2009 Eng, G.E
Indonesia	Gadjah Mada University	Faculty of Geography	Jul 2012 G.A, CEReS
	● Hasanuddin University		Sept 2007 All
	Hasanuddin University	Faculty of Mathematics and Natural Sciences, Postgraduate Studies Program, and Centre for Research and Community Development	Jul 2012 G.S.E, CEReS
	Indonesian Institute of Sciences	Research Center for Geotechnology	Mar 2001 Sc, G.S
	● Indonesian Institute of Sciences	Research Center for Chemistry	May 2013 Eng, G.E
	Indonesia University of Education		Aug 2018 Edu, G.ED
	● IPB University		Mar 2010 All
	● IPB University	Graduate School	Dec 2001 G.S.H
	● Islamic University of Riau		Nov 2016 All
	Lambung Mangkurat University	Faculty of Agriculture	Aug 2006 Hort, G.S.H
Korea	Meteorology, Climatology and Geophysics Agency		Nov 2008 Sc, G.S
	● Meteorology, Climatology and Geophysics Agency		Nov 2014 All
	● Mulawarman University	Faculty of Mathematics and Natural Science	Jun 2015 CEReS
	● Padjadjaran University		Jan 2011 All
	Padjadjaran University	Faculty of Mathematics and Natural Sciences Faculty of Agriculture Faculty of Agro-Industrial Technology	Nov 2012 G.S.E, G.S.H, CEReS, CEHFS
	Regency of Siak		Nov 2016 CEReS
	● Sebelas Maret University		Nov 2017 All
	● Sepuluh Nopember Institute of Technology		Jul 2012 All
	State University of Makassar	Postgraduate Program	Jun 2014 G.S.H
	● State University of Padang	Faculty of Mathematics and Natural Science	Sept 2015 CEReS
West Java province	● Syiah Kuala University		Aug 2017 All
	● Udayana University		Jul 2007 All
	Udayana University	Postgraduate Program	Jul 2012 G.A, CEReS
	Udayana University		Dec 2013 CEReS
	● University of Indonesia		Dec 1997 All
	University of Indonesia	Faculty of Engineering Faculty of Mathematics and Natural Science	Jul 2012 G.S.E, G.A, CEReS
	Education Department		Aug 2016 Edu
	● Ajou University		Nov 2015 All
	● Chonnam National University	College of Agriculture and Life Sciences	Jun 2004 Hort, G.S.H
	● Chosun University		Sept 2011 All
Korea	● Chung-Ang University		Jun 2017 All
	Chungnam National University	College of Agriculture and Life Sciences	Jul 2012 CEHFS
	● Geumgang University		Jun 2015 All
	● Hankyong National University		Mar 2018 All
	● Incheon National University		Dec 2017 All
	● Inha University	College of Economics & International Trade	Jul 2012 L.PE
	● Inje University	College of Medicine	Jun 2012 Med, G.M
	● Inje University		Jan 2017 All
	● Jeju National University	Graduate School of Science and Engineering College of Engineering	Mar 2016 Eng, G.E
	● Jeonbuk National University		Mar 2004 All
Korea	● Kangwon National University		Sept 2018 All
	● Kongju National University		Jan 2017 All
	● Kookmin University		Nov 2017 All
	● Korea University	School of Art and Design	Jan 2019 Eng, G.S.E, G.E
	● Korea University	School of Electorical Engineering	Jul 2010 G.A
	● Kyung Hee University		Dec 2016 All
	● Myongji University		Mar 2017 All
	● Pukyong National University		Feb 2016 All
	● Pusan National University		Jul 2019 All
	● Seoul National University		Aug 2011 All
Korea	● Seoul National University	College of Agriculture and Life Sciences	Jun 2004 Hort, G.S.H
	● Seoul National University	College of Fine Arts	Mar 2005 Eng, G.E
	Seoul National University	College of Pharmacy	May 2010 3Pharm
	Seoul National University	Institute of Green Bio Science and Technology	Mar 2014 CEHFS
	Seoul National University	College of Nursing	Mar 2016 G.N
	● Seoul National University of Science and Technology		Dec 2017 All
	● Sookmyung Woman's University		Nov 2017 All
	● Sungkyunkwan University		Nov 2015 All
	● Sungshin University		Jan 2019 All
	● Ulsan National Institute of Science and Technology		Nov 2017 All
Korea	Ulsan National Institute of Science and Technology	School of Design and Human Engineering	Jun 2014 Eng, G.E
	● University of Seoul		Jul 2018 All
	Yongin Kangnam School		Sept 2019 Edu

Country	University/Institute	Starting Date	Department
Korea	● Yonsei University	Oct 2010	All
	Yonsei University	College of Engineering and Active Polymer Center for Pattern Integration	Apr 2010 Eng, G.E, G.A
	Yonsei University	Graduate School	Oct 2018 G.S.E
Laos	● National University of Laos	Faculty of Education	Jan 2018 Edu
Malaysia	● Multimedia University		Sept 2010 All
	● National University of Malaysia	Faculty of Engineering and Built Environment	Oct 2014 Eng, G.E
	● Taylor's University	School of Biosciences	May 2016 Hort, G.S.H
	● Tenaga National University		Sept 2016 All
	Universiti Sultan Zainal Abidin	Faculty of General Studies and Advanced Education and Faculty of Applied Social Sciences	Feb 2019 G.H
	● University of Malaysia, Sarawak		Apr 2010 All
	● University of Malaya		Feb 2013 All
Mongolia	University of Malaya	Faculty of Science	Dec 2015 G.A
	● University Putra Malaysia		Aug 2016 All
	University Putra Malaysia		Aug 2011 Hort, G.S.H
	● Mongolian University of Life Sciences		Sept 2015 All
	● Mandalay Technological University		Nov 2017 Eng, G.S.E, G.E
Myanmar	● University of Medicine 1, Yangon		Mar 2017 G.M
Pakistan	● Yezin Agricultural University		Sept 2014 G.S.H
	Agricultural University Peshawar		Jul 2010 G.S.H
	● Ateneo de Manila University		Nov 2016 All
Philippines	International Rice Research Institute		Jun 2007 G.S.H
	Pangasinan State University	College of Teacher Education	Jan 2017 Edu, G.ED
	University of San Carlos	School of Education	May 2019 Edu, G.ED
	University of Santo Tomas	College of Science Graduate School Research Center for the Natural Sciences	May 2009 3Pharm
	● University of the Philippines Los Baños		May 2013 All
	Nanyang Technological University		Nov 2007 All
Singapore	● Nanyang Technological University	School of Mechanical and Aerospace Engineering	Sept 2012 Eng, G.E
	● Nanyang Technological University	Lee Kong Chian School of Medicine	Jan 2017 G.M
	National University of Singapore	Faculty of Science	Jul 2010 G.A
	National University of Singapore	NUS Libraries	Feb 2019 A.L.C
	● National University of Singapore	School of Design and Environment Department of Architecture	Jan 2015 Eng, Hort, CEHFS
	● Ngee Ann Polytechnic	School of Engineering	Feb 2011 Eng
	● Singapore University of Technology and Design		Apr 2015 All
	China Medical University	College of Pharmacy	Jan 2018 Pharm
	● Chung Yuan Christian University		Oct 2018 All
	Kaohsiung Medical University		May 2012 All
	Ming Chuan University		Nov 2015 All
	● Ming Chuan University	School of Design	Nov 2012 Eng, G.S.E, G.E
	Nanhua University	Department of NPO Management	Nov 2007 CSTC
	National Applied Research Laboratories (NARLabs)		Jun 2015 All
Taiwan	● National Central University		Nov 2017 All
	National Central University	College of Earth Science	Dec 2012 Sc, G.S
	● National Cheng Kung University		Dec 2006 All
	● National Chengchi University (NCCU)		Aug 2018 All
	● National Chiao Tung University		May 2016 All
	● National Chiao Tung University	College of Humanities and Social Sciences	Dec 2013 Eng, G.S.E, G.E
	● National Chiao Tung University	College of Science	Jan 2010 Eng, G.S.E, G.E
	National Chiao Tung University	College of Science	Apr 2018 MCRC
	● National Kaohsiung Normal University		Jul 2019 All
	● National Sun Yat-sen University		Sept 2019 All
	National Taichung University of Education		Aug 2019 All
	● National Taipei University of Education		Mar 2016 All
	● National Taipei University of Technology	College of Design	Mar 2018 Eng, G.S.E, G.E
	● National Taiwan Normal University		Apr 2019 All
	● National Taiwan Normal University	College of Education	Jul 2013 Edu, G.ED
	National Taiwan University		Nov 2008 All
	National Taiwan University	College of Bioresources and Agriculture	Mar 2010 CEHFS
	● National Taiwan University	College of Medicine	Feb 2020 Med, G.M
	● National Taiwan University of Arts		Jul 2012 All
	● National Tsing Hua University		Feb 2015 All
	National Tsing Hua University	Department of Physics	Dec 2012 G.A
	● National University of Kaohsiung (NUK)		Oct 2018 All
	National Yunlin University of Science and Technology		Dec 2006 All
	● National Yunlin University of Science and Technology	College of Design	Aug 2009 Eng, G.S.E
	● Shih Chien University		Feb 2019 All
	Shih Chien University	Department of Tourism Management Department of Recreation Management	May 2007 CSTC
	● Southern Taiwan University of Science and Technology		Dec 2006 All
● Taipei Medical University		Nov 2017 All	
● Taipei Medical University	College of Medicine	Sept 2016 G.M	
● Tamkang University		Dec 2019 All	
● Tatung University		Aug 2017 All	
● Tunghai University		Sept 2008 All	
● Tunghai University	College of Fine Arts and Creative Design	Jul 2018 Eng, G.S.E, G.E	
● Wenzao Ursuline University of Languages		Apr 2017 All	

Country	University/Institute	Starting Date	Department		
Thailand	● Asian Institute of Technology	Aug 2012	All		
	● Chiang Mai University	Feb 1996	3Pharm		
	● Chiang Mai University	Jun 2015	All		
	● Chulabhorn Graduate Institute	Nov 2013	All		
	● Chulabhorn Research Institute	Dec 2019	All		
	● Chulalongkorn University	Apr 1990	Pharm, G.M.P		
	● Chulalongkorn University	Sept 2000	All		
	● Kasetsart University	Mar 2000	All		
	● Khon Kaen University	Dec 2017	All		
	● Khon Kaen University	Faculty of Nursing	Feb 2015	G.N	
	● King Mongkut's University of Technology Thonburi	Mar 2013	All		
	● King Mongkut's University of Technology North Bangkok	Sirindhorn International Thai-German Graduate School of Engineering	Oct 2017	G.S.E, G.E	
	● King Mongkut's University of Technology Thonburi	School of Bioresources and Technology	Aug 2004	G.S.H	
	● Mae Fah Luang University	Aug 2016	All		
	● Mae Fah Luang University	School of Agro-Industry	Aug 2008	Hort, G.S.H	
	● Maejo University	Aug 2018	All		
	● Mahasarakham University	Faculty of Technology	Sept 2016	Hort, G.S.H	
	● Mahidol University	Oct 2008	All		
	● Mahidol University	Faculty of Pharmacy	Apr 2000	3Pharm	
	● Mahidol University	Faculty of Science	Oct 2000	Hort, G.S.H	
	● Mahidol University	Faculty of Social Sciences and Humanities	Mar 2019	Edu	
	● Mekong Institute	Feb 2018	All		
	● National Center for Genetic Engineering and Biotechnology	Jul 2004	G.S.H		
	● Prince of Songkla University	May 1996	All		
	● Rajamangala University of Technology Isan, Sakon Nakhon Campus	Mar 2020	All		
	● Rajamangala University of Technology Thanyaburi	Mar 2015	All		
	● Rangsit University	Aug 2017	All		
	● Rangsit University	Faculty of Architecture	Feb 2016	G.E	
	● Siam University	Mar 2018	All		
	● Silpakorn University	Mar 2011	All		
	● Silpakorn University	Faculty of Pharmacy	Dec 2002	3Pharm	
	● Srinakharinwirot University	Faculty of Pharmacy	Oct 2016	Pharm	
	● Suan Sunandha Rajabhat University	May 2018	All		
	● Thai-Nichi Institute of Technology	Jan 2010	All		
	● Thammasat University	Sirindhorn International Institute of Technology	Dec 2008	CFME	
	● Thammasat University	Sirindhorn International Institute of Technology	Apr 2016	Eng, G.E	
	Vietnam	● Hanoi National University of Education	Feb 2009	Edu, G.ED	
		● Hanoi University	Jul 2019	All	
		● Ho Chi Minh city University of Technology (HCMUT)	Faculty of Chemical Engineering	Mar 2017	G.A
		● Ho Chi Minh City University of Technology and Education (HCMUTE)	Mar 2017	All	
● Hong Bang International University (HBU)		Mar 2017	All		
● International University		Dec 2015	All		
● Nong Lam University		Feb 2013	All		
● University of Medicine and Pharmacy at Ho Chi Minh City		Aug 2017	G.M		
● Vietnam National University of Forestry		Dec 2014	CEReS		
● Vietnam National University, Hanoi		Faculty of Education	Jun 2003	Edu, G.ED	
● Vietnam National University, Ho Chi Minh City		Faculty of Biology, University of Science	Nov 2013	CEHFS	
● Vietnam National University, University of Social Sciences and Humanities, Hanoi		Aug 2019	All		
● Vietnam National University of Agriculture		Feb 2003	Hort, G.S.H		

Europe

Country	University/Institute	Starting Date	Department	
Austria	Medical University of Vienna	Jun 2010	All	
Belgium	● Catholic University of Louvain	Faculty of Bioscience Engineering, Institute of Condensed Matter and Nanosciences	Oct 2014	Eng, G.S.E, G.E
	● University of Liège	May 2018	All	
Czech Republic	● University of Ostrava	Dec 2018	All	
Denmark	● Aarhus University	Faculty of Health	Oct 2016	G.M
Finland	● Aalto University	School of Arts, Design and Architecture	Jun 2008	All
	● Seinäjoki University of Applied Sciences	Sept 2000	All	
	● Tampere University of Technology	Dec 2015	All	
	● University of Eastern Finland	Sept 2004	All	
	● University of Jyväskylä	Feb 2016	All	
	● University of Lapland	Apr 2009	All	
	● University of Tampere	May 2018	All	
	● University of Tampere	School of Education	Dec 2011	Edu, G.ED
France	● Claude Bernard University Lyon 1	Mar 2018	Eng, G.S.E, G.E	
	● Ecole Nationale Supérieure Création Industrielle	Feb 2010	All	
	● Ecole normale supérieure Paris-Saclay	May 2017	All	
	● Ecole Supérieure d'Ingenieurs en Electrotechnique et Electronique d'AMIEN	May 2019	Eng, G.S.E, G.E	
	● ESIGELEC - School of engineering Rouen FRANCE	Sept 2009	All	
	● IFP School	Oct 2017	G.S.E, G.E	
	IAB (Institute for Advanced Biosciences)/Inserm-CNRS-Univ Grenoble-Alpes (UI209) joint research center, Inserm	Apr 2016	CPMS	

Country	University/Institute	Starting Date	Department	
France	● Nantes Atlantique School of Design	Jan 2010	All	
	● National School of Architecture, Paris la Villette	Mar 2015	Eng, G.E	
	Nice Sophia Antipolis University	Dec 2017	All	
	● Nice Sophia Antipolis University	Faculty of Medicine	Jun 2016	G.M, CPMS
	● Polytechnic Institute LaSalle Beauvais - ESITPA	Jul 2016	All	
	● Strate School of Design	Jun 2010	All	
	● Toulouse III - Paul Sabatier University	Faculty of Sciences and Engineering	Apr 2019	Eng, G.E, G.S.E, CFME
	● University of Burgundy	May 2018	All	
	University of Burgundy	International Center for French Studies	Nov 2015	CLE
	● University of Cergy-Pontoise	Faculty of Sciences and Technologies	Jul 2017	Eng, G.S.E, G.E
Germany	● University of Rennes 1	May 2008	All	
	● University Paris-Est Creteil Val de Marne	Sept 2007	All	
	● Augsburg University of Applied Sciences	Apr 2020	All	
	Charité - Medical University of Berlin	Oct 2010	All	
	● Cologne University of Applied Sciences	Nov 2012	All	
	Cologne University of Applied Sciences	Faculty of Cultural Sciences	Jan 2018	G.S.E
	● Dresden University of Applied Science	Jun 2015	All	
	● Dresden University of Applied Science	Faculty of Horticulture	Nov 2008	Hort, G.S.H
	● Dresden University of Technology	Faculty of Architecture	Mar 2014	Hort, G.S.H
	● Free University of Berlin	Faculty of History and Cultural Studies	Jul 2016	All
	● Friedrich Schiller University Jena	Sept 2019	Eng, G.S.E, G.E	
	German Rheumatism Research Center Berlin (DRFZ)	Aug 2013	CPMS	
	● Heidelberg University	Mar 2010	All	
	● Heinrich Heine University Düsseldorf	May 2007	All	
	Humboldt-University	May 2010	All	
	Humboldt University of Berlin	Faculty 1 of Mathematics and Natural Sciences, Integrative Research Institute for the Sciences	Mar 2010	G.A
	● Karlsruhe Institute of Technology	Physical Institute	Dec 2011	G.S.E, G.A
	● Leibniz University of Hannover	Faculty of Architecture and Landscape Sciences	Oct 2012	Hort, G.S.H
	● Ludwig Maximilian University of Muenchen	Department of Chemistry	Jun 2015	G.A
Greece	● Rosenheim University of Applied Sciences	Nov 2013	All	
	Technical University of Braunschweig	Feb 2014	All	
	● University of Augsburg	Faculty of Mathematics and Natural Sciences	Dec 2010	G.A
	● University of Bayreuth	Faculty of Engineering Science	Sept 2007	Eng, G.S.E, G.E
	● University of Göttingen	May 1982	All	
	● University of Leipzig	Mar 2000	All	
	University of Wuerzburg	Institute of Physics and Astronomy	Sept 2009	Eng, G.S.E, G.E
	● Weihenstephan - Triesdorf University of Applied Science	Mar 2020	Hort, G.S.H	
	Hungary	● Aristotle University of Thessaloniki	Feb 2014	All
		● Szent István University	Faculty of Agricultural and Environmental Science	Feb 2001
	Ireland	● University of Debrecen	Dec 1996	All
		National University of Ireland	University College Dublin	Jul 2016
	Italy	Institute of Atmospheric Sciences and Climate of the National Research Council	National Institute for Environmental Studies	Dec 2016
● ISIA Roma Design		May 2012	All	
● Iuav University of Venice		Jul 2012	Eng, G.S.E, G.E	
● Polytechnic University of Milan		Oct 2009	All	
Sapienza University of Rome		Feb 2013	All	
University of Basilicata		School of Engineering	Apr 2015	Sc, G.S
● University of Bologna		School of Agriculture and Veterinary Medicine	Dec 2013	Hort, G.S.H
● University of Florence		Department of History Archaeology, Geography, Fine and Performing Art (SAGAS)	Mar 2011	G.H.S
● University of Naples Federico II		Department of Electrical Engineering and Information Technology	Sept 2017	Eng, G.S.E, G.E
University of Trento		Department of Civil, Environmental and Mechanical Engineering	Oct 2017	Eng, G.S.E, G.E
Netherlands	● Eindhoven University of Technology	Department of Industrial Design	Oct 2009	Eng, G.S.E, G.E
	● Norwegian University of Science and Technology	Faculty of Information Technology and Electrical Engineering	Sept 2014	G.E
Portugal	● IADE-U Institute of Art, Design and Business	Mar 2013	All	
	● Far Eastern State Agrarian University	Apr 2019	All	
	● Lomonosov Moscow State University	May 2007	All	
	● National Research University Higher School of Economics, Russia	Sept 2013	All	
	● Novosibirsk State Agrarian University	Jun 2019	All	
Russia	● Novosibirsk State Pedagogical University	Mar 2020	All	
	● Peter the Great St. Petersburg Polytechnic University	May 2017	All	
	● Primorskaya State Academy of Agriculture	Mar 2017	All	
	● Russian State University for of the Humanities	Jul 2009	All	
	● Ryazan State University named for S. Yesenin	Oct 2015	All	
	● Sakhalin State University	May 2017	All	
	● Ural Federal University	Dec 2017	All	
	● Autonomous University of Madrid	Madrid Institute for Advanced Studies in Nanoscience	Jan 2012	G.A
Spain	● International University of Catalonia	School of Architecture	Jul 2017	Eng, G.S.E, G.E
	● University of Salamanca	Dec 2015	All	
	● University of the Basque Country	Sept 2017	All	
Sweden	● Linköping University	Feb 2007	All	
	● Mid Sweden University	Faculty of Science, Technology and Media	Mar 2015	Eng, G.E
	● Swedish University of Agricultural Sciences	Faculty of Landscape Planning, Horticulture and Agricultural Sciences	Nov 2011	Hort, G.S.H
	Uppsala University	Oct 2008	All	
Switzerland	● Bern University of Applied Sciences	Dec 2012	All	

Country	University/Institute	Starting Date	Department
Switzerland	● Bern University of Applied Sciences	College of Architecture, Wood and Building	Jan 2008 G.S.H
	● University of Neuchatel	Faculty of Economics and Business	Jun 2019 L.P.E, G.S.S, G.S.H.S.P.A
U.K.	Arts University Bournemouth		Dec 2013 IEEI
	● Glasgow School of Art		Oct 2011 All
	Leeds Beckett University	Faculty of Health and Social Sciences	Jun 2014 Edu
	● Northumbria University		Nov 2015 All
	University college London	Institute of Education	Mar 2011 All
	● University of Durham		Jul 2019 All
	● University of Leicester	Leicester Medical School	Aug 2017 G.M
	● University of Sheffield	Department of Landscape	Mar 2013 Hort, G.S.H
	University of Ulster	School of Nursing	Apr 2019 Nur, G.N
	University of Warwick	Faculty of Arts	Oct 1990 Litt
● York St John University		Apr 2018 All	

Latin America

Country	University/Institute	Starting Date	Department
Brazil	Federal University of Rio Grande do Sul	School of Medicine	Jun 2017 G.M
	State University of Campinas		Sept 2001 All
	● University of Sao Paulo (USP)	Faculty of Medicine	May 2012 MMRC
	● Autonomous University of Aguascalientes		Oct 2011 All
	Autonomous University of Aguascalientes	Centre of Design and Construction Science	Jul 2004 Eng, Sc&Tech
Mexico	● Ibero-American University		Nov 2016 All
	● Panamerican University		Dec 2015 All
	● Marist University of Merid		Jan 2019 All
	● Metropolitan Autonomous University		Sept 2018 All
	● Monterrey Institute of Technology and Higher Education		Feb 2016 All
	● National Autonomous University of Mexico (UNAM)	Faculty of Architecture	Sept 2015 Eng, G.E
	● University of Veracruz		Sept 2013 All
	● University of Guadalajara		Jan 2017 All
	University of Guanajuato		Feb 2018 All
	● University of Monterrey		Jul 2014 All
Panama	● Panama University		Jan 2016 All
	Panama University		Nov 2014 CEHFS
Peru	● Panama University of Technology		Jan 2016 All
	National University of Engineering		Jan 2011 All
	National University of Engineering		Jan 2006 Eng, Sc&Tech

Middle East

Country	University/Institute	Starting Date	Department
Iraq	Mustansiriyah University		Feb 2018 All
	University of Baghdad		Feb 2017 All
Turkey	● Akdeniz University		Jun 2011 All
	● Istanbul Technical University		Mar 2013 All
	● Izmir University of Economics	Faculty of Fine Arts and Design	Sept 2013 Eng, G.S.E, G.E
	● Yildiz Technical University		Oct 2013 All
UAE	● Ajman University	College of Engineering	Aug 2017 Eng, G.E

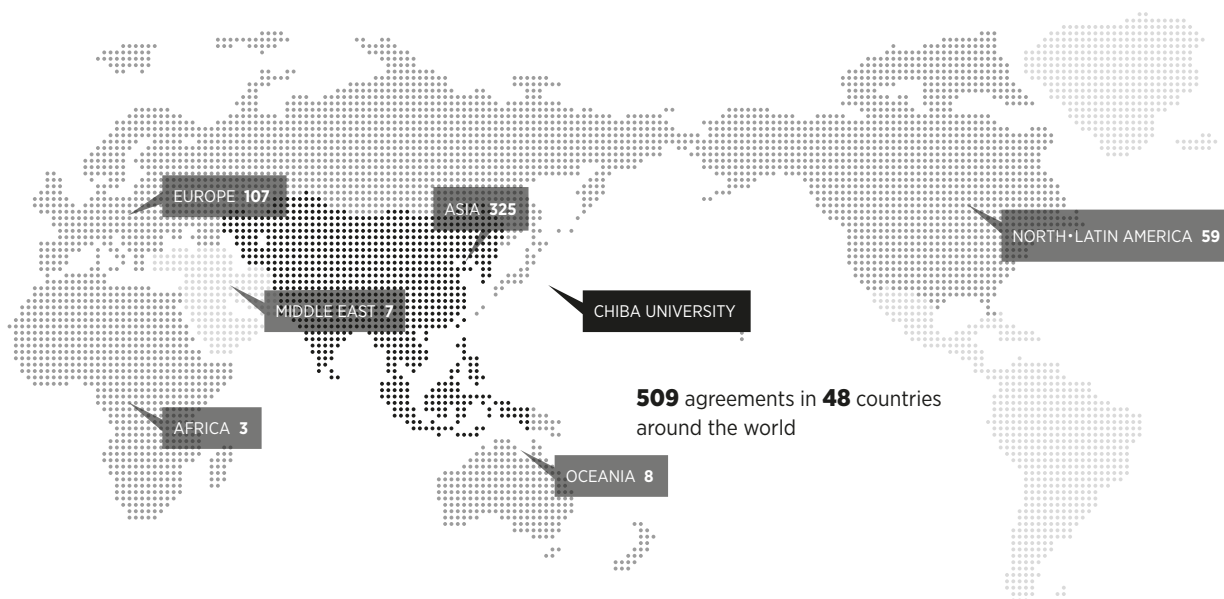
North America

Country	University/Institute	Starting Date	Department
Canada	Carleton University		May 2018 All
	Governing Council of the University of Toronto	Faculty of Medicine	Mar 2019 G.M
	● Lakehead University		Mar 2018 All
	McGill University		Oct 2015 All
	McGill University	Alan Edwards Centre for Research on Pain	Jan 2016 CPMS
	● Saint Mary's University		Oct 2017 All
	● University of Alberta		Sept 1996 All
	University of Alberta	Faculty of Pharmacy and Pharmaceutical Sciences	Jan 1987 Pharm
	University of British Columbia	Faculty of Science UBC Botanical Garden Centre for Plant Research	Mar 2014 Hort, G.S.H
	● University of Prince Edward Island		May 2016 All
	● University of Regina		May 2017 All
	● University of the Fraser Valley		Dec 2019 All
	University of Waterloo	Renison University College	May 2016 Sc, G.S, CFS
	Chapman University	Center of Excellence in Earth Systems Modeling and Observations	Dec 2012 Sc, G.S
	U.S.A.	● College for Creative Studies	
Concordia University Wisconsin		School of Education	Mar 2013 Edu, G.ED
Harvard School of Public Health		President and Fellows of Harvard College	Jun 2014 CPMS
Rice University		George R. Brown School of Engineering	Dec 2013 Eng, G.E, G.A
● State University of New York at Buffalo		School of Engineering and Applied Sciences	Oct 2010 Eng, G.S.E, G.E
● State University of New York at Stony Brook			Apr 1996 All
● The New School			Apr 2012 All
Thomas Jefferson University		Jefferson Medical College	Feb 2010 Med, G.M
● University of Alabama			Jan 1984 All

Country	University/Institute	Starting Date	Department	
U.S.A.	University of Alabama at Birmingham	School of Nursing	Aug 1990	Nur
	University of Arizona		May 2005	All
	University of California, San Diego	Health Science	Aug 2015	G.M
	● University of Cincinnati		Jul 2012	All
	University of Georgia	College of Agricultural and Environmental Sciences	Sept 2013	Hort, G.S.H
	● University of Hawaii at Manoa	Department of Mathematics	Apr 2014	Sc, G.S
	University of Hawai'i at Mānoa	John A. Burns School of Medicine	Feb 2020	Med, G.M
	University of Houston	College of Business Administration	Aug 1990	LL&Econ
	● University of Illinois at Chicago		Sept 1996	All
	● University of Illinois	College of Medicine	Mar 2007	Med
	University of San Diego	Hahn School of Nursing and Health Science	Jun 2011	G.N
	University of Southern California	Keck School of Medicine	Sept 2016	G.M
	University of Washington	College of Built Environment	Mar 2004	Hort, G.S.H
	University of Washington	College of Environment	Jun 2010	Hort, G.S.H
	● University of Wisconsin-Milwaukee		Oct 2006	All
	William Marsh Rice University		Jul 2016	All

Oceania

Country	University/Institute	Starting Date	Department	
Australia	● Australian National University	Mar 1996	All	
	● Macquarie University	Feb 2011	All	
	Macquarie University	WiMed Research Centre	Sept 2014	CFME
	● Monash University	May 1994	All	
	● RMIT University (Royal Melbourne Institute of Technology)	Oct 2010	All	
	University of Sydney	Feb 2000	All	
New Zealand	Massey University	Sept 2013	All	
	University of Auckland	Maurice Wilkins Centre	Mar 2012	G.M



Double Degree Program

Chiba University has been offering double degree programs with partnership universities in China, Indonesia, Korea, Taiwan, Thailand and Germany since 2008. We aim that this student exchange will nurture human resources which have international perspectives.

Country	Partner University and Department	Chiba University	Field of Study	Degree		Starting Year(FY)
				Master	Doctor	
China	Tsinghua University, School of Architecture	Graduate School of Horticulture	Horticulture	●		2008
	Shanghai Jiao Tong University, School of Media and Design	Graduate School of Engineering	Design	●		2009
	Shanghai Jiao Tong University, School of Naval Architecture, Ocean and Civil Engineering	Graduate School of Engineering, Graduate School of Science and Engineering	Robotics		●	2009
	Shanghai Jiao Tong University, School of Agriculture and Biology	Graduate School of Horticulture	Horticulture	●	●	2011
	University of Electronic Science and Technology of China, School of Electronic Engineering	Graduate School of Engineering	Electronic Engineering		●	2014
	Nanjing Agricultural University, College of Horticulture	Graduate School of Horticulture	Horticulture	●		2015
	Nanjing University of the Arts, School of Industrial Design	Graduate School of Engineering	Design	●		2016
	Beijing Forestry University, School of Landscape Architecture	Graduate School of Horticulture	Horticulture	●		2016
	Zhejiang University, College of Computer Science and Technology	Graduate School of Science and Engineering	Design	●		2017
	Zhejiang Gongshang University, School of Oriental Language and Culture	Graduate School of Humanities and Studies on Public Affairs	Chinese History	●		2017
Guangzhou Academy of Fine Arts	Graduate School of Science and Engineering	Design	●		2019	
Indonesia	Bogor Agricultural University, Faculty of Agriculture	Graduate School of Horticulture	Horticulture	●		2010
	University of Indonesia, Faculty of Engineering, Faculty of Mathematic and Natural Science	Graduate School of Engineering, Graduate School of Advanced Integration Science	Medical Engineering	●	●	2012
	Udayana University, Post Graduate Program	Graduate School of Advanced Integration Science, CEReS	Remote Sensing	●	●	2012
	Gadjah Mada University, Faculty of Geography	Graduate School of Advanced Integration Science, CEReS	Remote Sensing	●	●	2012
	Hasnuddin University, Faculty of Mathematics and Natural Science, Postgraduate Studies Program, Center for Research and Community Development	Graduate School of Advanced Integration Science, CEReS	Remote Sensing	●	●	2012
	Bandung Institute of Technology, Faculty of Visual art and Design, Faculty of Earth Sciences and Technology, School of Life Sciences and Technology	Graduate School of Engineering, Graduate School of Advanced Integration Science, CEReS	Horticulture Remote Sensing	●	●	2012
Korea	Yonsei University, Graduate School	Graduate School of Science and Engineering	Design	●		2018
	Taiwan	National Chiao Tung University, College of Science	Graduate School of Science and Engineering		●	2019
Thailand	Mahidol University, Faculty of Science, Faculty of Graduate Studies	Graduate School of Horticulture	Horticulture	●	●	2016(M) 2008(D)
	Silpakorn University, Faculty of Pharmacy	Graduate School of Pharmaceutical Sciences, Graduate School of Medical and Pharmaceutical Sciences	Pharmaceutical		●	2012
	King Mongkut's University of Technology Thonburi, School of Bioresources and Technology	Graduate School of Horticulture	Horticulture		●	2014
	Mahidol University, Faculty of Pharmacy, Faculty of Graduate Studies	Graduate School of Pharmaceutical Sciences	Pharmaceutical		●	2014
	Thammasat University of Thailand, Sirindhorn International Institute of Technology	Graduate School of Engineering, CFME	Medical Engineering		●	2016
	Mae Fah Luang University, School of Agro-industry	Graduate School of Horticulture	Horticulture	●		2016
Germany	Chiang Mai University	Graduate School of Pharmaceutical Sciences, Graduate School of Medical and Pharmaceutical Sciences	Pharmaceutical		●	2017
	Cologne University of Applied Sciences, Faculty of Cultural Sciences	Graduate School of Science and Engineering	Design	●		2017

Number of Students / Number of Staff

Number of Students

Undergraduate

Faculties	Regular Students
College of Liberal Arts and Sciences	403
Faculty of Letters	771
Faculty of Law, Politics and Economics	1,593
Faculty of Law and Economics	6
Faculty of Education	1,677
Faculty of Science	891
Faculty of Engineering	2,813
Faculty of Horticulture	826
School of Medicine	731
Faculty of Pharmaceutical Sciences	433
School of Nursing	329
Total	10,473

Professional Graduate School

Professional Degree Program	Regular Students
Law School	56
Education	43
Total	99

Postgraduate

Faculties	Regular Students	
	Master's Program	Doctoral Program
Humanities and Social Sciences	3	43
Humanities and Studies on Public Affairs	95	57
Education	154	0
Science	1	5
Engineering	0	44
Science and Engineering	1,297	283
Horticulture	247	96
Advanced Integration Science	0	10
Medical and Pharmaceutical Sciences	151	612
Nursing	84	72
Global Degree Program of Global and Transdisciplinary Studies	6	0
Total	2,038	1,222

Number of Staff

	Officer	Faculty & Graduate	Center	Hospital	Library	Administrative Bureau	Total
President	1						1
Vice-President	6						6
Auditor	2						2
Sub Total	9						9
Professor		376	43	15			434
Associate Professor		334	65	54			453
Assistant Professor		165	48	163			376
Research Associates		4	0	0			4
Sub Total		879	156	232			1,267
Research Fellows		15	24	2			41
Affiliate School Teachers		98	0	0			98
Medical Staff		2	5	1,288			1,295
Admin. Staff		228	8	159	25	272	692
Sub Total		343	37	1,449	25	272	2,126
Total	9	1,222	193	1,681	25	272	3,402

International Student Enrollment

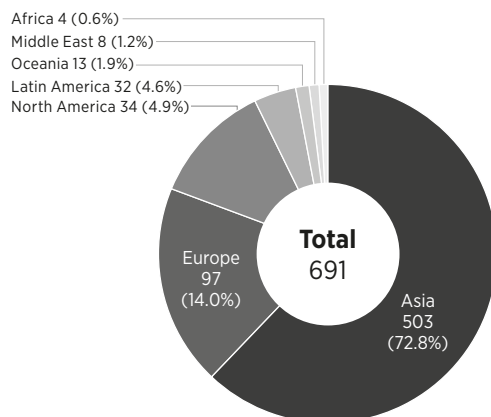
AREA	Countries	Undergraduate	Master's Program	Doctoral Program	Others	Total
AFRICA	Benin				1 (1)	1 (1)
	Egypt			1 (1)		1 (1)
	Gabonese				1 (1)	1 (1)
	Ghana			1 (1)		1 (1)
	Kenya			1		1
	Madagascar		1 (1)			2 (2)
	Mauritius				1	1
	Mozambique				1	1
	Nigeria		1	2 (2)		5 (4)
	Uganda			1 (1)		1 (1)
	Zambia		1 (1)			1 (1)
	Zimbabwe				1 (1)	1 (1)
	Bangladesh	1	1		5 (2)	2 (2)
	Cambodia	7 (6)	3			5
China	73	302 (3)	219 (22)	616 (5)	1,210 (30)	
India		1 (1)	1	2 (1)	4 (2)	
Indonesia	4 (3)	9 (6)	27 (15)	36 (4)	76 (28)	
Kazakhstan				1	1	
Korea	69 (28)	17 (1)	19 (1)	77 (8)	182 (38)	
Laos			1	3	4	
Malaysia	4	1	2	7	14	
Mongolia	5 (3)	2	2	3	12 (3)	
Myanmar		1	6 (3)	13 (2)	20 (5)	
Nepal			3		3	
Pakistan		1 (1)	1		2 (1)	
Philippines				3 (1)	12 (2)	
Singapore	1			2 (1)	3 (1)	
Sri Lanka	1				1	
Taiwan	3	4	14	143	164	
Tajikistan				1	1	
Thailand		3 (1)	13 (3)	148 (2)	164 (6)	
Turkmenistan		1 (1)		1 (1)	2 (2)	
Uzbekistan				1 (1)	1 (1)	
Vietnam	3	1	2 (1)	6 (2)	12 (3)	
EUROPE	Belgium				2	2
	Bulgaria				1	1
	Croatia				1 (1)	1 (1)
	Finland			1	13	14
	France			1	12	13
	Germany				56 (1)	56 (1)
	Greece				1	1
	Hungary				1	1
	Italy				20	20
	Kosovo		1 (1)			1 (1)
	Netherlands				3	3
	Norway				1	1
	Poland				2 (2)	2 (2)
	Portugal				2	2
	Romania				1 (1)	1 (1)
	Russia			1	25 (2)	26 (2)
	Spain				5	5
Sweden				20	20	
U.K				3	3	
LATIN AMERICA	Argentina		1 (1)			1 (1)
	Brazil	1	2 (1)	1	3 (2)	7 (3)
	Colombia		1 (1)		2 (1)	3 (2)
	Cuba		1 (1)		1 (1)	2 (2)
	Ecuador		1 (1)			1 (1)
	Guatemala		1 (1)		1 (1)	2 (2)
	Mexico		3 (3)	4 (1)	105 (1)	112 (5)
	Panama		1 (1)		9 (1)	10 (2)
MIDDLE EAST	Iran			2		2
	Iraq			2 (2)		2 (2)
	Oman				1	1
	Syria			1		1
	Turkey			1	11 (1)	12 (1)
NORTH AMERICA	Canada				1	1
	U.S.A		3 (1)	1	43	47 (1)
OCEANIA	Australia				18	18
Total		172 (40)	365 (28)	341 (57)	1450 (52)	2,328 (177)

() shows the number of international students funded by Ministry of Education, Culture, Sports, Science and Technology of Japan

International Researcher Exchange / University Fees

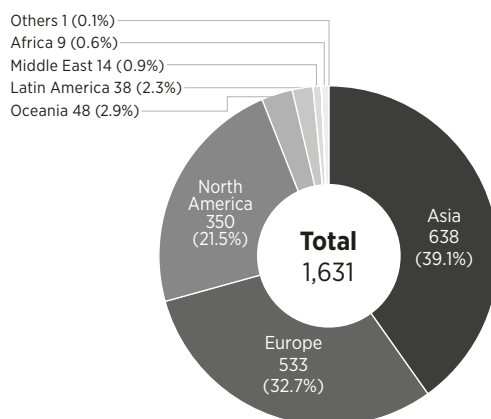
International Researchers at Chiba University

Asia	503
Europe	97
North America	34
Latin America	32
Oceania	13
Middle East	8
Africa	4
Total	691



Chiba Univ. Researchers Abroad

Asia	638
Europe	533
North America	350
Oceania	48
Latin America	38
Middle East	14
Africa	9
Others	1
Total	1,631



University Fees

(FY 2020)

Classification	Entrance Examination Fee	Admission Fee	Tuition (per year)	
			Enrolled students before March 2020	Enrolled students after April 2020
Undergraduate Students	17,000 yen	282,000 yen	535,800 yen	642,960 yen
Graduate Students	Master's Program	30,000 yen	535,800 yen	642,960 yen
	Doctoral Program	30,000 yen	520,800 yen	642,960 yen
	Law School	30,000 yen		804,000 yen
Research Students	9,800 yen	84,600 yen		346,800 yen
Specially Registered Non-degree Students	9,800 yen	28,200 yen		14,800 yen/credit
Exchange Students	From Partner Universities with Fee Waiver Agreement	Waived	Waived	Waived
	Other than Above	Waived	Waived	14,800 yen/credit
Exchange Research Students	From Partner Universities with Fee Waiver Agreement	Waived	Waived	Waived
	Other than Above	Waived	Waived	346,800 yen

As of April 2020; fees are subject to change. All values are in Japanese yen.

University Library

Central Library

1-33, Yayoi-cho, Inage-ku, Chiba-shi, Chiba,
263-8522 Japan

Tel +81-43-290-2258 Fax +81-43-290-2265

E-mail fbc2258@office.chiba-u.jp

Inohana Library

1-8-1, Inohana, Chuo-ku, Chiba-shi, Chiba,
260-8671 Japan

Tel +81-43-226-2211 Fax +81-43-226-2214

Matsudo Library

648, Matsudo, Matsudo-shi, Chiba,
271-8510, Japan

Tel +81-47-308-8717 Fax +81-47-308-8721

The University Library provides various services and resources to support the research and educational activities of

the University faculty, students, staff and the general public.

There are three libraries on three campuses: The Central Library on Ni-shi-Chiba campus, the Library of Health Sciences (Inohana Library) on Inohana campus and the Library of Horticultural Science (Matsudo Library) on Matsudo campus.

The Library holds 1.3 million volumes, 25,500 periodicals, and many non-printed materials. In addition, the library web site is the key resource for those on campus who research for information of their interest as well as providing access to OPAC (Online Public Access Catalog), to various kinds of bibliographic databases, 20,000 full-text online journals,

the University institutional repository, and other reference resources.

The Central Library reopened in 2012 under the concept of Academic Link, which aims to promote students' active learning, the new type of learning space, various contents for learning, and support by students, faculty members and librarians have been provided. The reconstruction of the Horticultural Science Library in Matsudo Campus was completed in 2019 to provide contemporary learning space and to accommodate the new learning support activities under the Academic Link concepts.

For further information, visit <https://www.LL.chiba-u.jp/english/>

Statistics

	Central Lib.	Lib.of Health Sciences	Lib.of Horticultural Science	Total	
Collections (as of March 31, 2020)	Books (Japanese)	654,111 vols.	118,486 vols.	54,798 vols.	827,395 vols.
	(Foreign)	337,588 vols.	122,087 vols.	14,334 vols.	474,009 vols.
	Periodicals (Japanese)	9,851 titles	2,730 titles	3,085 titles	15,666 titles
	(Foreign)	5,826 titles	3,097 titles	904 titles	9,827 titles
Circulation (FY2019)	Number of visitors	557,476 users	63,278 users	2,637 users	129,095 users
	Days open	299 days	326 days	279 days	
	Volumes lent	110,428 vols.	16,030 vols.	2,637 vols.	129,095 vols.
Library cooperation (FY2019)	Copy orders to other library	1,413 cases	1,614 cases	70 cases	3,097 cases
	Copy requests from other library	1,519 cases	2,726 cases	77 cases	4,322 cases
Accommodation	Building Space	15,808 m ²	3,950 m ²	1,016 m ²	20,774 m ²
	Seats	1,552 seats	331 seats	169 seats	2,052 seats



Schools and Center Affiliated to the Faculty of Education

Nishi-Chiba Campus

To meet the diverse educational demands and to help in solving the problems of a rapidly changing society, the Faculty of Education includes the

following four affiliated schools and one center.

The Elementary School, The Junior High School, The School for Children

with Special Needs, The Kindergarten, Attached Center for Teacher Education and Development.

Kindergarten Affiliated to the Faculty of Education

(as of May 1, 2017)

Age	No. of Classes	Enrollment
3-year Olds	1	28
4-year Olds	2	56
5-year Olds	2	56
Total	5	140

Elementary School Affiliated to the Faculty of Education

Grade	No. of Classes	Enrollment
1	3	105
2	3	105
3	3	105
4	3 (1)	105 (15)
5	3 (1)	105 (15)
6	3 (1)	105 (15)
Total	18 (3)	630 (45)

The figures in brackets indicate the number of classes for returnee students and the approximate number of returnee students.

Junior High School Affiliated to the Faculty of Education

Grade	No. of Classes	Enrollment
1	4	140 (12)
2	4	140 (12)
3	4	140 (12)
Total	12	420 (36)

The figures in brackets indicate the number of classes for returnee students and the approximate number of returnee students.

School for Children with Special Needs Affiliated to the Faculty of Education

Section	Grade	No. of Classes	Enrollment
Elementary School Section	Low, Middle, High	3	18
Junior High School Section	1	3	18
	2		
	3		
High School Section	1	3	24
	2		
	3		
Total		9	60

Administrative Staff

Executive Directors

President	TOKUHISA Takeshi
for Planning Affairs and Human Resources	NAKAYA Haruaki
for Education, Student and International Affairs	WATANABE Makoto
for Research Affairs	SEKI Minoru
for Public Relations and Information	YAMADA Masaru
for General Affairs	MATSUURA Akiyuki
for Legal Affairs	HORI Yutaka
Auditor	KUWAKO Isamu
Auditor (External)	KADO Kiyoe

Vice-Presidents

for Education	OZAWA Hiroaki
for Education	TAKEUCHI Hiroya
for Education, Student and International Affairs	SATO Yukihiko
for Admission	SATO Satoshi
for Research	YANAGISAWA Akira
for Management	YAMAMOTO Shuichi
for University Hospital	YOKOTE Koutaro
for Future Medicine	NAKAYAMA Toshinori
for Public Relations and Harassment Prevention and Response	MIYAZAKI Misako
for Community Relations and Fund	KOBAYASHI Tatsuaki
for Legal Affairs	SHIMOI Yasushi

Deans

College of Liberal Arts and Sciences/Graduate School of Global and Transdisciplinary Studies	OZAWA Hiroaki
Faculty of Letters / Graduate School of Humanities	YONEMURA Chiyo
Faculty of Law, Politics and Economics / Graduate School of Social Sciences	KIMPARA Kyoko
Faculty of Education / Graduate School of Education	KOMIYAMA Tomoyoshi
Faculty of Science / Graduate School of Science	SATO Toshinori
Faculty of Engineering / Graduate School of Engineering	SATO Yukihiko
Faculty of Horticulture / Graduate School of Horticulture	MATSUOKA Nobuhiko
School of Medicine / Graduate School of Medicine	NAKAYAMA Toshinori
Faculty of Pharmaceutical Sciences / Graduate School of Pharmaceutical Sciences	MORIBE Kunikazu
School of Nursing / Graduate School of Nursing	NAKAMURA Nobue
Graduate School of Humanities and Studies on Public Affairs	MIZUSHIMA Jiro
Law School	SHIMOI Yasushi
Graduate School of Science and Engineering	YANAGISAWA Akira
Graduate School of Medical and Pharmaceutical Sciences	ITO Motoyuki
Graduate Degree Program of Global and Transdisciplinary Studies	KAMISATO Tatsuhiro

Deputy Vice-Presidents

for Kashiwanoha Campus	TAKAGAKI Michiko
for General Education	IZUMI Toshiaki
for Diversity Promotion Section	MORI Emi
for Research Administration	ITO Tomoyoshi
for Industry Collaboration Research	TAKEI Masahiro
for Information	IMAIZUMI Takashi
for Financial Analysis	KATADA Shin

Directors

University Library / Academic Link Center	TAKEUCHI Hiroya
University Hospital	YOKOTE Koutaro
Center for Environmental Remote Sensing	HATTORI Katsumi
Medical Mycology Research Center	SASAGAWA Chihiro
Center for Analytical Instrumentation	NISHIDA Atsushi
Institute of Management and Information Technology	IMIYA Atsushi
Center for Frontier Science	OTO Kenichi
Center for Relational Studies on Global Crises	SAKAI Keiko
Marine Biosystems Research Center	TOGASHI Tatsuya
Soft Molecular Activation Research Center	ARAI Takayoshi
Molecular Chirality Research Center	OMATSU Takashige
Center for Frontier Medical Engineering	HANEISHI Hideaki
Center for Environment, Health and Field Sciences	TAKAGAKI Michiko
Biomedical Research Center	HATANNO Masahiko
Center for Forensic Mental Health	IYO Masaomi
Center for Preventive Medical Sciences	MORI Chisato
Future Medicine Research Center	HANAOKA Hideki
Center for Regenerative Therapeutics	MOTOHASHI Shinichiro
Research Center for Child Mental Development	SHIMIZU Eiji
Plant Molecular Science Center	SAITO Kazuki
Venture Business Laboratory	KODAMA Hiroaki
Radioisotope Research Center	UEHARA Tomoya
Shanghai Jiao Tong University and Chiba University / International Cooperative Research Center	LIU Hao

Campus Locations and General Contacts

NISHI-CHIBA CAMPUS

1-33, Yayoi-cho, Inage-ku, Chiba-shi, Chiba,
263-8522 Japan

- College of Liberal Arts and Sciences
- Faculty of Letters
- Faculty of Education
- Faculty of Law, Politics and Economics
- Faculty of Science
- Faculty of Engineering
- Graduate School of Humanities and Studies on Public Affairs
- Law School
- Graduate School of Education
- Graduate School of Science and Engineering
- Graduate Degree Program of Global and Transdisciplinary Studies
- University Library -Central Library
- Center for Environmental Remote Sensing
- Center for Analytical Instrumentation
- Institute of Management and Information Technologies
- Center for Frontier Science
- Academic Link Center
- Venture Business Laboratory
- Radioisotope Research Center

International Affairs Division General Student Service Center

Tel : +81-43-290-2043

Fax : +81-43-290-2041

E-mail : kokusai@office.chiba-u.jp

International Student Division General Student Service Center For international students and applicants from overseas

Tel : +81-43-290-2193, 2197

Fax : +81-43-290-2198

E-mail : dge2195@office.chiba-u.jp

Directions

1 minute walk from North exit of JR Nishi Chiba Station (Sobu Local Line) or 10 minute walk from Midoridai Station (Keisei Line)

INOHANA CAMPUS

1-8-1, Inohana, Chuo-ku, Chiba-shi, Chiba,
Japan

260-8670 (for Medicine, Biomedical)

260-8671 (for University Library)

260-8672 (for Nursing)

260-8673 (for MMRC)

260-8675 (for Pharmaceutical Sciences)

260-8677 (for University Hospital)

Tel +81-43-222-7171

- School of Medicine
- Faculty of Pharmaceutical Sciences
- School of Nursing
- Graduate School of Medicine
- Graduate School of Medical and Pharmaceutical Sciences
- Graduate School of Nursing
- Medical Mycology Research Center (MMRC)
- Biomedical Research Center
- Center for Forensic Mental Health
- Center for Preventive Medical Sciences
- Future Medicine Research Center
- Center for Regenerative Therapeutics
- Research Center for Child Mental Development
- Plant Molecular Science Center
- University Library -Library of Health Sciences
- University Hospital

Directions

Take Keisei Bus bound for Chibadaigaku Byouin (Chiba University Hospital) or Minami Yahagi from bus stop #7 at East exit of JR Chiba Station / Keisei Chiba Station (Keisei Line). Takes 15-30 minutes depending on the traffic.

-Medicine and Nursing: Exit at "Chibadai Igakubu Iriguchi (Chiba University School of Medicine-entrance)" stop

-Pharmaceutical Sciences: Exit at "Chibadai Yakugakubu Mae (Chiba University Faculty of Pharmaceutical Sciences-entrance)" stop

-MMRC: Exit at "Chuo Hakubutsukan (National History Museum and Institute)" stop

-University Hospital: Exit at "Chibadaigaku Byouin (Chiba University Hospital)"

MATSUDO CAMPUS

648, Matsudo, Matsudo-shi, Chiba,
271-8510 Japan

Tel +81-47-308-8706 Fax +81-47-308-8720

- Faculty of Horticulture
- Graduate School of Horticulture
- University Library -Library of Horticultural Sciences

Directions

15-minute walk from East exit of Matsudo Station (JR Joban Line or Shin-Keisei Line)

KASHIWANOHA CAMPUS

6-2-1, Kashiwanoha, Kashiwa-shi, Chiba,
277-0882 Japan

Tel +81-4-7137-8000 Fax +81-47-137-8008

- Center for Environment, Health and Field Sciences

Directions

5-minute walk from West exit of Kashiwanoha Campus Station (Tsukuba Express)

AD ALTIORA SEMPER
UNIVERSITAS CHIBA

2020
2021

CHIBA UNIVERSITY

1-33, Yayoi-cho, Inage-ku, Chiba-shi, Chiba, 263-8522 Japan

www.chiba-u.ac.jp/e

Dec. 2020

Copyright (C) 2020-2021 Chiba University. All Rights Reserved

