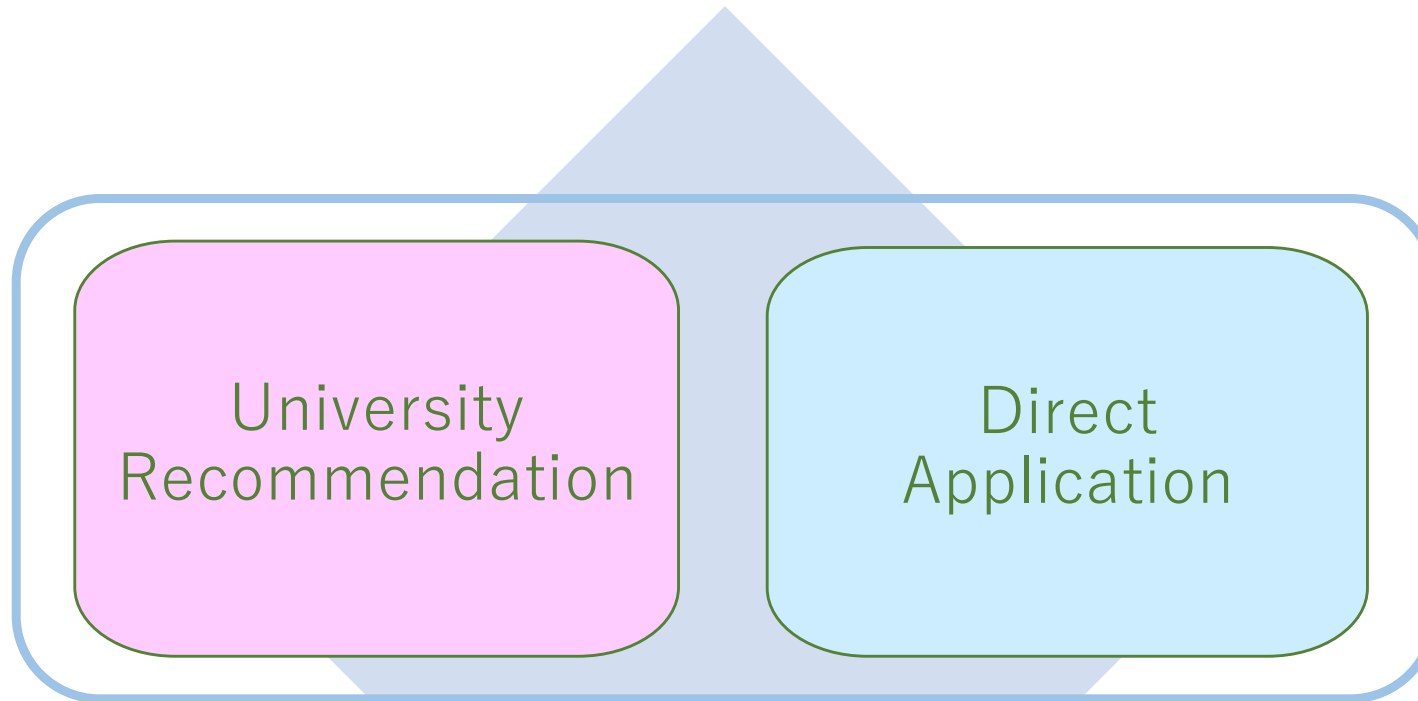


# Scholarship Guide for Privately-financed International Students 2024

## Types of Scholarships



New information will be updated on ISD webpage.

There're about 50 University recommendation scholarships and 20 Direct application scholarships throughout the year.

## University recommendation

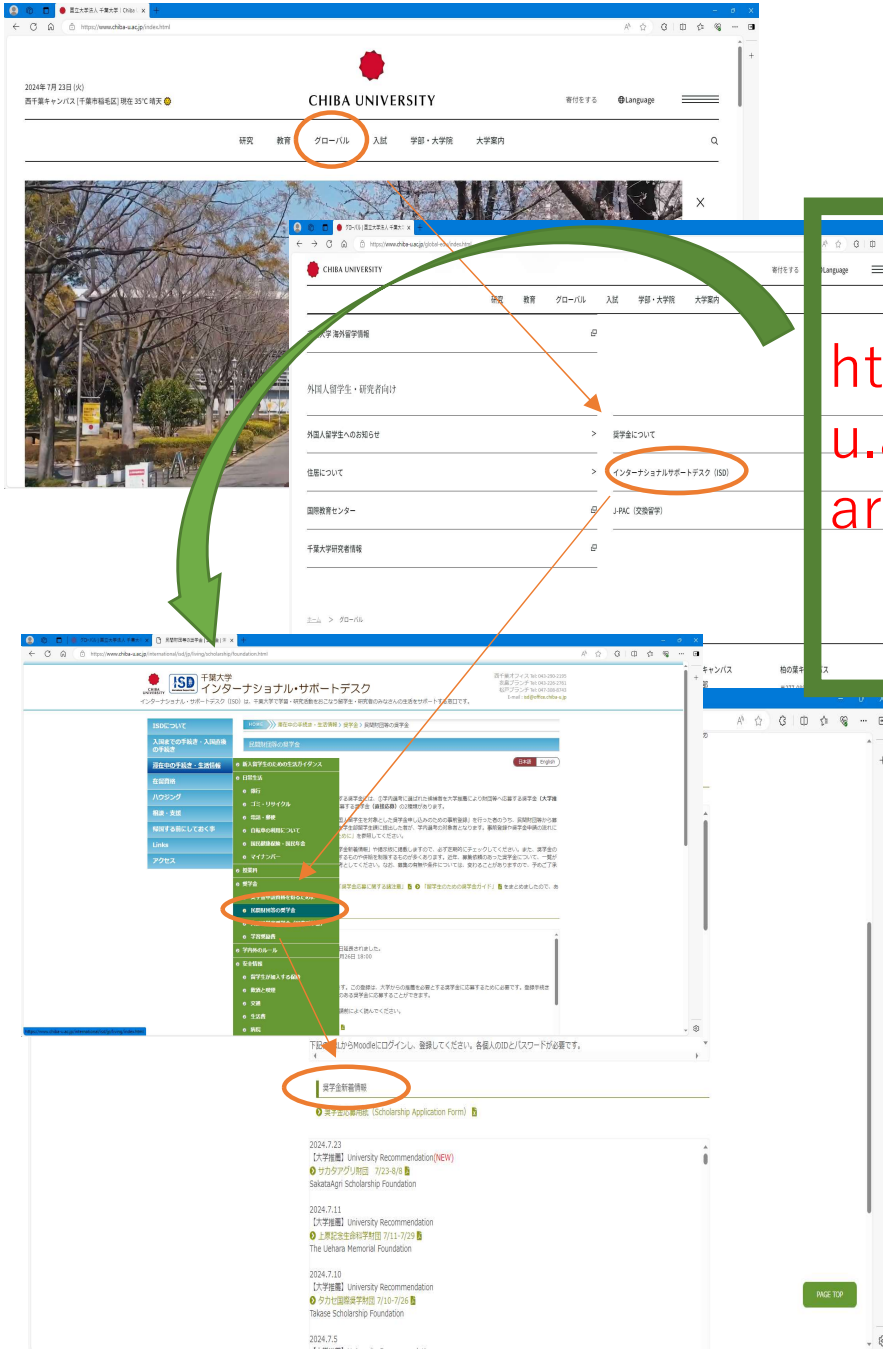
### **Scholarships that requires university recommendation to apply**

- Only selected students from each university can apply
- 30,000 yen to 200,000 yen per month
- Higher chance compared to direct application
- Needs to register once a year to apply

## Direct application

### **Students can apply directly**

- Students all over Japan can apply
- 50,000 yen to 200,000 yen per month
- High applicant ratio but tends to be high payment amount



## ISD Webpage

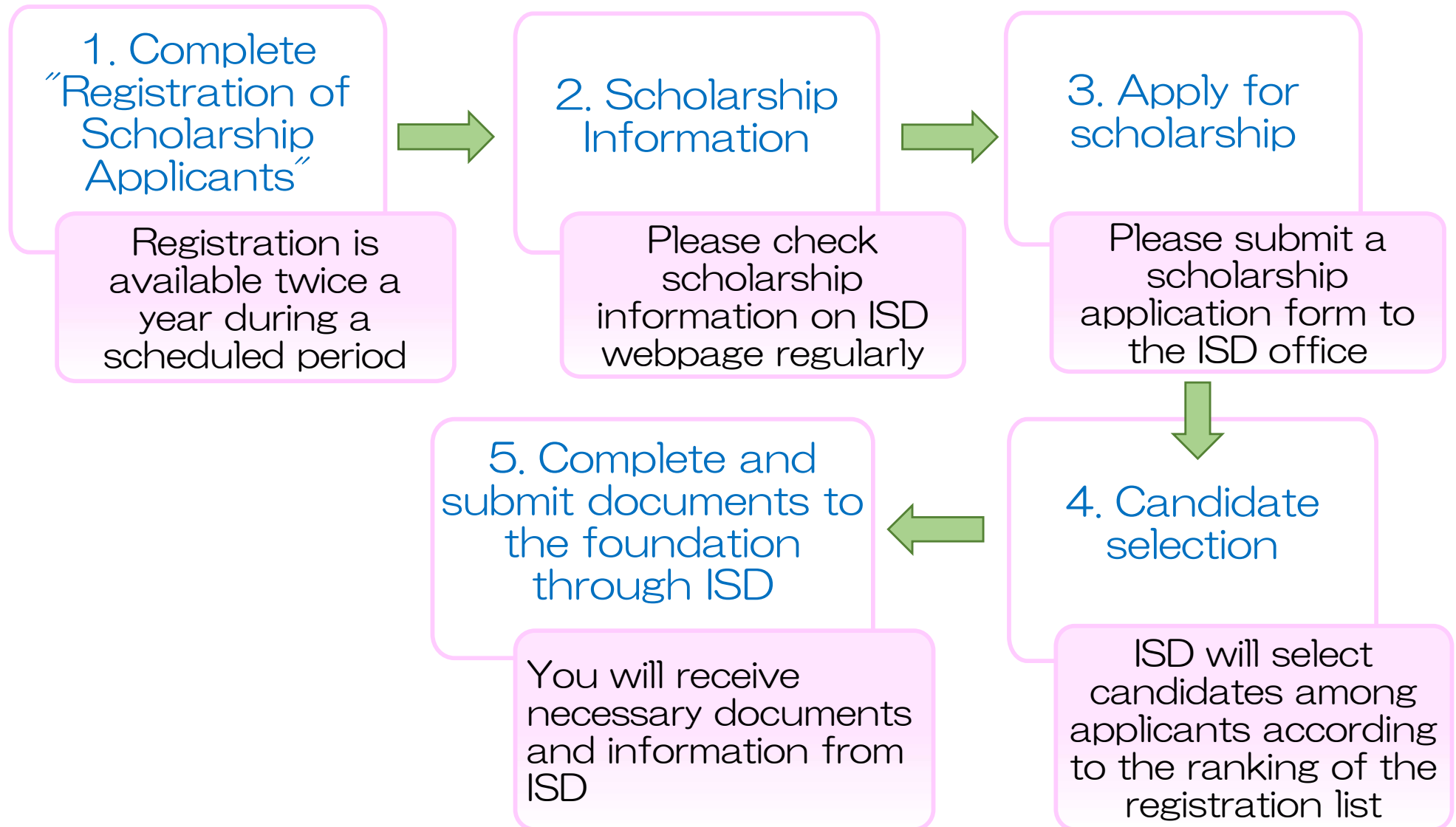
<https://www.chiba-u.ac.jp/international/isd/jp/living/scholarship/foundation.html>



Please bookmark ISD webpage and check regularly for the new information

※ Please note that university recommendation scholarships tend to have short application period

# How to apply university recommendation scholarships



# Registration of Scholarship Applicants

**Registration list will be used to decide the candidates from Chiba University**

Registration (Spring / Fall)

Microsoft Forms

or

Moodle



The registration list will be made by scoring the applicants' grade, tuition exemption status and scholarship status for the previous fiscal year



The final list will be check and confirmed by the International Student Support Committee



“Registration of Scholarship Applicants” will be completed

You will be able to apply for scholarships that require a recommendation from Chiba University



This registration is for the following international students at Chiba University

<b>Spring</b>	<ol style="list-style-type: none"> <li>1) International students who will continue or enroll either as an undergraduate student or a graduate student. (Current and Newly-enrolled Students)</li> <li>2) International student who enrolled as a research student by October 2023. (Current Research Student) and International students who holds a master's degree and will enroll as a research student in April 2024. Notice: Research students who will enroll in April 2024 but don't hold a master's degree cannot register this time.</li> <li>3) International students who are currently MEXT scholarship or Government Sponsored student whose period of scholarship ends in March 2025 and wish to apply for scholarships starting after April 2025.</li> </ol>
<b>Fall</b>	<ol style="list-style-type: none"> <li>1) International students who will continue or enroll either as an undergraduate student or a graduate student. (Current and Newly-enrolled Students)</li> <li>2) International students who enrolled as a research student by April 2024. (Current Research Student) and International students who holds a master's degree and will enroll as a research student in October 2024. Notice: Research students who will enroll in October 2024 but don't hold a master's degree cannot register this time.</li> <li>3) International students who are currently MEXT scholarship or Government Sponsored student whose period of scholarship ends in March 2025 and wish to apply for scholarships starting after April 2025.</li> <li>4) International students who were not able to sign up for the previous registration</li> </ol>

Eligible applicants must satisfy all the following conditions

- 1) International student who enrolls in Chiba University as an undergraduate student, a graduate student, or a research student during the school year when a scholarship granted. \* \*Must hold a "Student visa". Applicable to prospective students
- 2) International student who does not exceed the minimum period required for graduation. \*  
\*Granted period of leave of absence may be excluded.
- 3) International student who holds great academic standings and is never given any disciplinary actions within the past one year.

## Registration schedules . . .

- < Fall 2024 >
- October 2024
- << << Information will be announced in early September

- Fall registration will be valid until March 2025
- Please register again in April 2025



- < Spring 2025 >
- January (Current students) and March (New students) 2025
- << << Information will be announced in early January



## PLEASE NOTE THAT . . .

- Strict adherence to the application period!!

If you are unable to register during the period due to unavoidable circumstances, please be sure to notify the International Student Division in advance and follow the instructions from the person in charge.

- Note that the registration method is different for new and current students

- New students in April : **Microsoft Forms**
- New students in October and current students: **Moodle**

## On-campus Recommendation Criteria

① School Year	20%
② Grade	60%
③ Tuition exemption status	10%
④ Scholarship status in a previous year	10%

## ① School Year (20%)

Graduate	Master Program, Doctoral Program (Final year)
	Master Program, Doctoral Program (Other than above))
	Research Students
Undergraduate	Fourth-year, Senior
	Other than above

## ② Grade (60%)

First-year, Freshman	EJU Scour
Second-year and higher	Grade in previous year
Graduate / Research students	Evaluated by academic advisor <b>✖Please make sure to report your research results to your academic advisor</b>

## ③ Tuition Exemption Status (10%)

Scoring in a status for the previous fiscal year

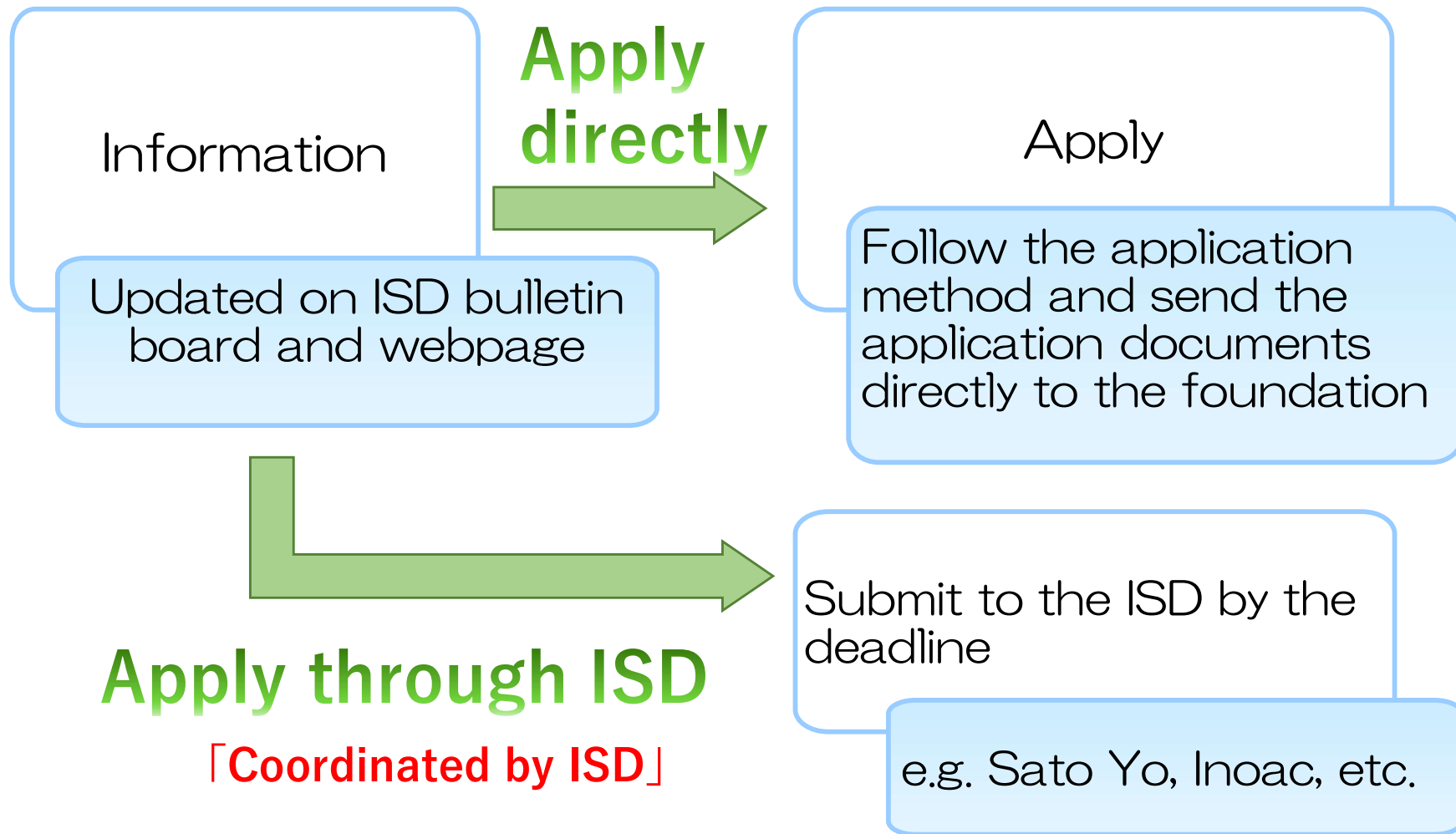
【None > Half > Full Exemption】

## ④ Scholarship Status (10%)

Scoring in a scholarship status for the previous fiscal year

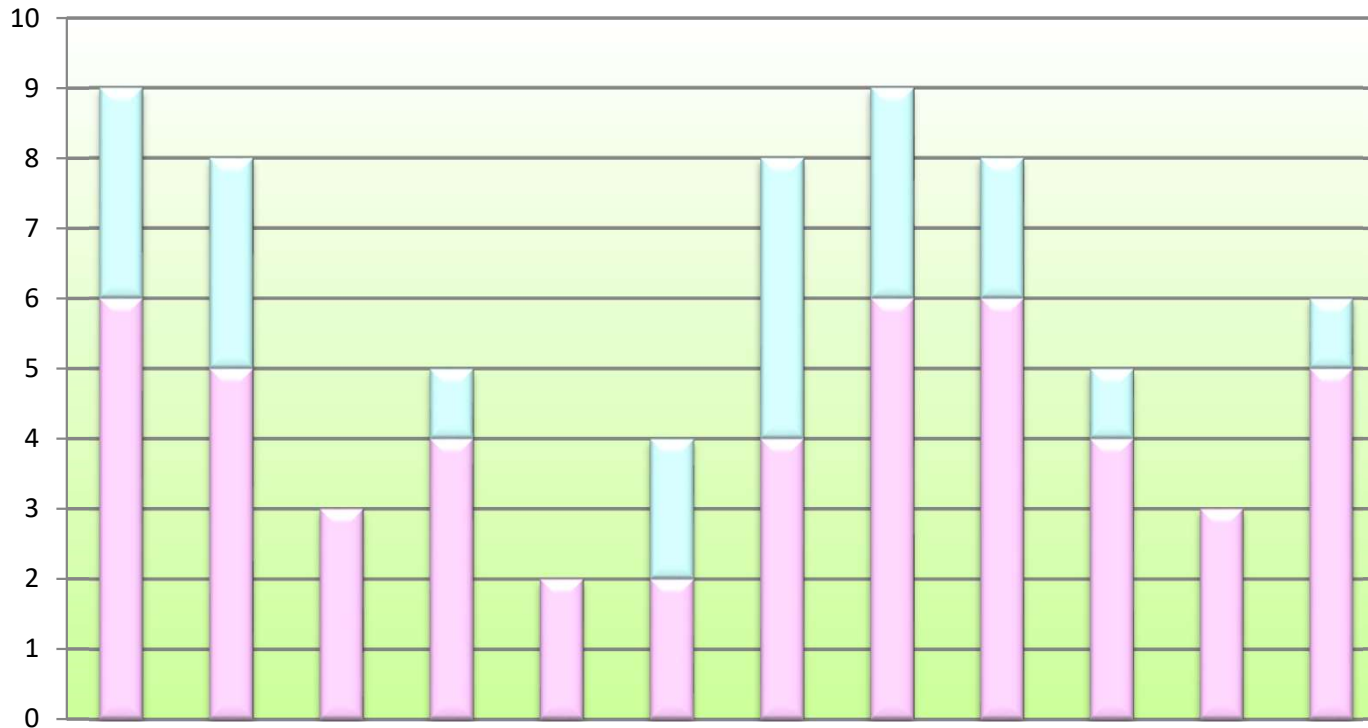
【No > Yes (Amount)】

# How to apply direct application scholarships



# Number of scholarships offered in 2023

50 University recommendations, 20 Direct applications



	April	May	June	July	Aug.	Sep.	Oct.	Nov.	Dec.	Jan.	Feb.	Mar.	2023
U.R.	6	5	3	4	2	2	4	6	6	4	3	5	50
D.A.	3	3	0	1	0	2	4	3	2	1	0	1	20

CHIBA  
UNIVERSITY

Recruitment Period	List of Scholarships	
April	Takayama International Education B	Ajinomoto M,D
	Sojitz B,M,D	Kaneko for International M,D
	Maeda M	Kokudo B,M,D
May	JGC-S B,M,D,R	JEES (Study) B,M,D
	JEES (Minority host country) B,M,D	JEES (Japanese language test) B,M,D
	JEES (Language teaching test) B,M,D	
June	KDDI M,D	Iuchi B,M,D
	Lotte (Fall) B,M,D	
July	Takase M,D	Dietary Scientific Research M, D
	Futaba D	ASSURAN International B,M
August	Rotary Yoneyama Memorial B,M,D	Park Yong Koo M
September	Watanuki M,D	Heiwa Nakajima B,M,D
October	Insurance Association B,M	Horita B,M,D
	Kawashima Shoji Memorial B,M,D	Otsuka Toshimi M,D

B=Undergraduate Students, M=Master Program, D=Doctoral Program, R= Research Students

※Referenced from 2023



Recruitment Period	List of Scholarships	
November	Toyota Tsusho B,M,D	International Kyowa B,M,D
	Taisei B,M,D	Kyoritsu International B,M,D
	T. Banaji Indian Students B, M, D	Iwaki M, D
December	Lotte B,M,D	Tonen international M, D
	Kamenori R,M,D	Hashiya B,M,D,R
	Yasuda B	Takayama International Education B
January	Kambayashi M,D	SGH B,M,D
	Fuji Seal B, M, D	Inner Trip B, M, D
February	Hirose B,M	Asahi Glass M,D
	Kambayashi M	
March	Korean B,M,D	AEON B,M
	Mabuchi B	Docomo International M
	Yasuda (Sports) B	

B=Undergraduate Students, M=Master Program, D=Doctoral Program, R= Research Students

※Referenced from 2023

Recruitment Period	List of Scholarships	
April	Honjo International M,D	Kokudo B,M
	International Student Exchange B	
May	Tokyo YWCA B	Nitori International B,M
	International Student Exchange B	
July	Sato Yo (Fall) B,M,D	
September	Atsumi International D	Raito M
October	Ito for International Education Exchange B,M	MJBL B,M,D
	Honjo International M,D	Inoac International Education B,M,D
November	Japan-China Friendship M,D	Takaku D
	Kyoritsu International B,M	


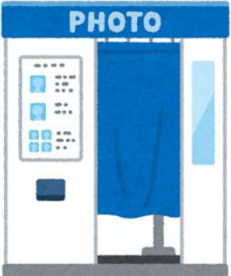


Recruitment Period	List of Scholarships	
December	Sato Yo (Spring) B,M,D	Iwatani Naoji B,M,D
January	Okamoto B,M,D,R	
March	Otsuka Toshimi B,M,D	

B=Undergraduate Students, M=Master Program, D=Doctoral Program, R= Research Students

※Referenced from 2023

## (A) How to fill out an application form

<p>Application Form</p> 	<ul style="list-style-type: none"><li>• Fill in as many items as possible</li><li>• Do not use friction pens (disappearing ballpoint pens)</li><li>• Do not omit the names of faculties and graduate schools.</li><li>• Essays should be written in 90~100% of the page space.</li><li>• Essays should be written in line with the purpose of the Foundation.</li></ul>
<p>ID Photo</p> 	<ul style="list-style-type: none"><li>• Please use a photo shop or a photo booth. If you also create data, it is convenient to print additional data.</li><li>• The background should be white, and the photo should be bright.</li><li>• Be sure to write your name on the back of the photo.</li></ul>

<p>Recommendation letter</p>	<ul style="list-style-type: none"> <li>• Graduate students→Academic Advisor</li> <li>• Undergraduate students→Seminar teacher</li> </ul> <p>Students who are not in the seminar should ask their faculty member or class advisor. (Ask the faculty office!)</p>
<p>Health Certificate</p>	<ul style="list-style-type: none"> <li>• Medical examination is free of charge at University's Safety and Health Organization, but if you are unable to do so, you must undergo a medical examination at the local hospital at your own expense.</li> </ul>
<p>Certificate of Enrollment</p>	<ul style="list-style-type: none"> <li>• Issued from an automatic issuing machine at Student Support Division</li> </ul>
<p>Academic Transcript</p>	<ul style="list-style-type: none"> <li>• Issued from an automatic issuing machine at Student Support Division, or faculty office.</li> </ul>

**If you are unsure of how to fill out your application documents or need to check your Japanese, please contact ISD**



## (B) Preparing for the interview

- ◆ First impressions are very important in interviews. Even if you have a great background and skills, if you don't look good, you will make a negative impression on the interviewer. Make sure go to the interview in a suit.
- ◆ The interview is not a Japanese language exam. Don't be afraid of mistakes and tell them about yourself as much as you can.
- ◆ If you are worried about your Japanese, at least make the first and last greetings properly.
- ◆ Please be very careful not to be rude to others.



## 1) Dress code

### 男性

#### ネクタイ

スーツに合うシンプルなものを選び、曲がっていないか確認する。

#### スーツ

派手過ぎず、落ちついた色のもを選ぶ。ズボンはきちんとプレスされているか確認する。



#### ヘアスタイル

髪型は清潔感があることが大切。きちんと整える。

#### 手

爪はきれいに切っておく。時計は、全体に調和するものを着ける。

#### 足元

靴は黒またはダーク系の色を選び、事前に磨いておくこと。

### 女性

#### アクセサリー

アクセサリーはシックなものを選び、イヤリングやピアスは揺れないものにする。

#### スーツ

スカートでもパンツでもOK。スカートの場合、座った時に膝が少し出るくらいの丈が良い。落ち着いた色を選ぶ。

#### 靴

バッグは履歴書や職務経歴書などが折らずに入る大きめのものを用意する。



#### ヘアスタイル

派手なヘアスタイルは避ける。

#### メイク

派手過ぎず清潔感のあるナチュラルメイクを心がける。

#### 手

派手な色のマニキュアは避け、ページュや淡いピンクなど落ち着いた色を選ぶ。

#### 足元

靴はヒールが高すぎない黒か茶系のパンプスを選ぶ。ミュールやサンダルはNG。ストッキングは、ナチュラルな肌に近いものを選ぶ。伝線していないか事前に確認する。

## 2) Bring your documents

Make a copy in advance and be sure to bring it with you on the day of the interview.

## 3) Practice expected questions

Practice in advance how to introduce yourself, why you are studying in Japan, what kind of study and research you are doing, and other questions that are likely to be asked in an interview.

## 4) Confirmation of the interview venue in advance

Please check transportation and travel times in advance and arrive at least 10 minutes in advance. If you register the phone number of the scholarship foundation where you will be interviewing and the ISD (043-290-2199) on your mobile phone in advance, you will not have any problems if something happens.

## 5) Belongings

Copy of application documents, writing utensils, notebook, student ID, residence card, handkerchief, pocket tissue, etc.



## When applying for a university-recommended scholarship

1. Multiple applications for internal selection can be made at the same time. However, if you receive a recommendation through the internal screening, all other applications will be canceled.
2. University recommendation is one for each person at the same time. You will not be able to apply for another university-recommended scholarship until you have the results.  
(Including ALDIC PhD and other Incentives and Research funds.)
3. It is possible to apply direct application scholarship while applying for the university recommendation scholarship. However, if you have passed both, be sure to receive a university recommendation scholarship and decline direct application scholarships.
4. If you are currently receiving a scholarship, you can apply if the period of the scholarship you want to apply for does not overlap with the scholarship period.

## When applying for a direct application scholarship

1. Please notify the selection process and result (including procedures for continuing to receive scholarships) to ISD.



## Note . . .

If you have any questions, please do not hesitate to contact us at the following address.

- International Student Support Section, International Student Division (Scholarship)

Tel : 043-290-2199 (Weekdays 9:00-16:00)

email : [intl-scholarship@chiba-u.jp](mailto:intl-scholarship@chiba-u.jp)

- ISD website (Scholarship information)

<https://www.chiba-u.ac.jp/international/isd/jp/living/scholarship/foundation.html>